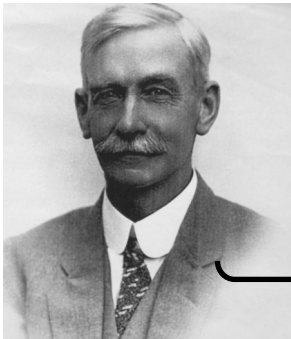


New Shirley Community Centre | 10 Shirley Road | Library, Service Centre, Learning Centre, Playground, Playcentre



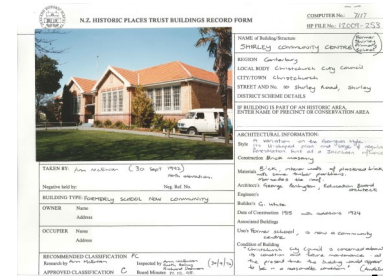
George Penlington: NCEB and CEB architect, 1900-1931



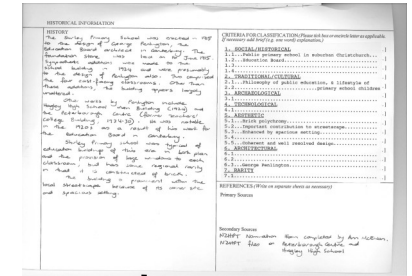
This building was built as Shirley Primary School in 1915 to the design of Education Board architect George Penlington. A place for learning.



As Shirley Community Centre it became a place for: Cultural, Educational and Recreational Activities.



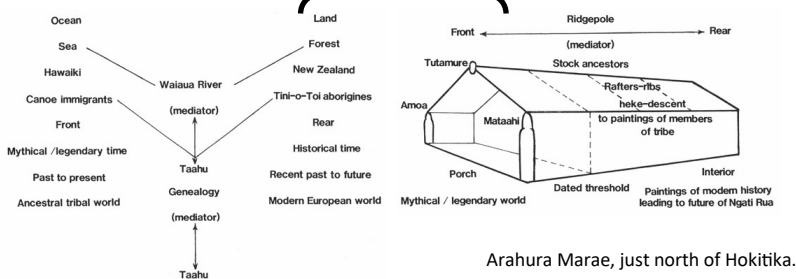
Georgian style, U-shaped plan, Jacobean influence. Brick masonry with Marseilles tile roof.



Polychromatic brick construction and large triple hung windows.



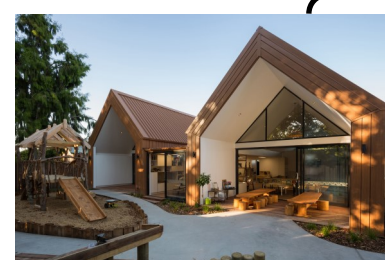
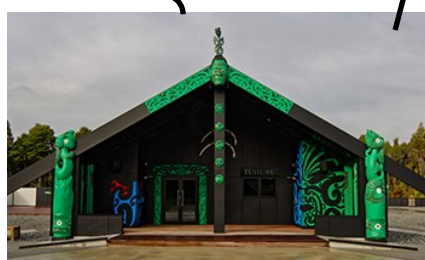
For more information:
<https://www.10shirleyroad.org.nz/>



St Martin's Community Centre, Christchurch. Combination of large glass windows and new/recycled bricks.

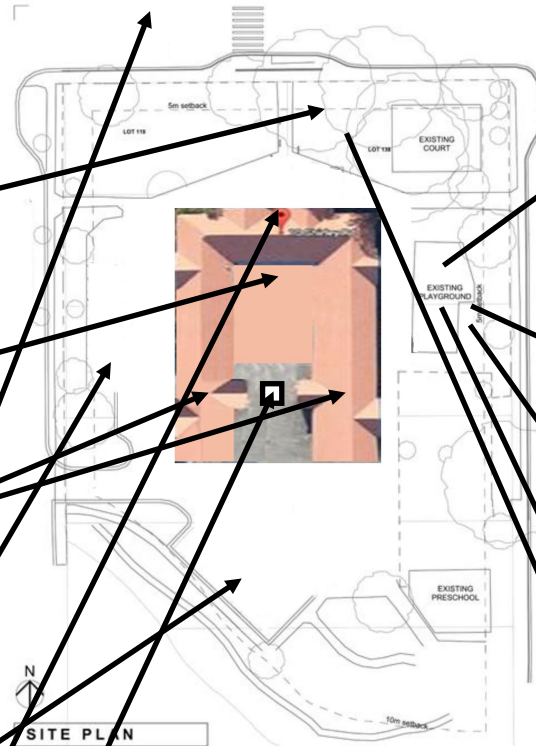
Creators Early Learning Centre, Hamilton. Natural wood, large glass windows, features marae design.

Creators Early Learning Centre, Hamilton. Cathedral ceilings. Skylight and Sliding doors to internal garden.



New Shirley Community Centre | 10 Shirley Road | Library, Service Centre, Learning Centre, Playground, Playcentre

- a whole neighbourhood block dedicated to this community (new purpose built library/learning centre, beside newly landscaped Dudley stream with existing Shirley Playcentre and upgraded playground)
- established large trees with seating underneath, grass area for weekend outdoor market, seating under verandah of the new centre building, outdoor chess set, existing basketball court, fruit trees
- library: open longer hours so fulltime workers have better access, with service centre, free wifi/internet access, wifi enabled printer, public computers, tables so you can bring your own device (iPad/Laptop), comfortable chairs by magazines/fiction
- learning centre: open glass space with sliding doors to create smaller rooms when needed for community groups, after school activities, holiday programs, classes for: job seekers, family history, self publishing etc.
- website and community noticeboard on the outside of the centre, listing all local community facilities/places to hire/groups/activities/contact details
- disability/sensory friendly playground so all children are included and enjoy this playground
- existing bus stops on either side of Shirley Road, onsite parking behind the centre, off street parking upgraded on Slater Street and Chancellor Street
- Entrance architecture similar to front of marae, welcoming everyone into this space, celebrate and acknowledge Maori culture.
- Inside Entrance displays on: Treaty Of Waitangi, NZ History, ANZAC History, to remind of our ancestors
- "Welcome" displayed in different languages to represent the different nations of those who have settled in Christchurch
- Exhibit Design "Your Space in this World" symbols to represent: Christchurch Earthquakes: White Chair and Cherry Blossom Tree, ANZAC Day: White Cross and Poppies, Maori Heritage: Black/White Kowhai-whai patterns and Pungas/Ferns



Existing playground has basic playground equipment, only upgrade if necessary, refresh paint colours



Remove bark chips, surfacing for safety, easy access for strollers/wheelchairs, low maintenance, less mess



Footpath/roads around/through playground, so children learn road safety skills while playing



Disability access, all inclusive equipment, so everyone can play together, whether in wheelchairs/strollers or not

Add other equipment beside the court: outdoor chess set, spider web swing etc.

