

1. Shirley Centre | Location
 - 1.1 Suburbs surrounding 10 Shirley Road, Innes Ward Deprivation Index, SmartView Community Facilities
 - 1.2 Projected Population, CCC District Planning Maps 25 & 32
 - 1.3 CCC & Ōtautahi Community Housing Trust, Kāinga Ora (Housing New Zealand)
 - 1.4 Nearest Bus Stops/Routes to Papanui/Aranui/Parklands/New Brighton Libraries, Nearest Bus Stops/Routes to Shirley Library, Bus Routes Network Map, Nearest Bus Stops/Routes Bus Routes to 10 Shirley Road, Bus Routes to Local Community Centres
 - 1.5 Route from Local Schools to 10 Shirley Road, Local Schools Info, Local Schools Development Plans
 - 1.6 EnviroSchools
 - 1.7 CCC Have Your Say Consultation: Engagement Feedback for 10 Shirley Road Report
2. Shirley Centre | Learning Libraries
3. Shirley Centre | Legacy

My vision is for a citizen hub/'home' base, a purpose built building with adaptable learning spaces in the centre, surrounded by library 'rooms'/spaces. Set amongst the significant trees, with an updated inclusive playground & Dudley Creek in the background.

- Civic managed facility, citizen hub, new purpose built/bigger Shirley Library with Learning/Meeting Spaces, located within the Innes Ward, which currently has no suburban Christchurch City Library. At 30 June 2018, there were an estimated 24,700 people living in Innes ward. This was 6.4% of Christchurch City's population. (<https://ccc.govt.nz/culture-and-community/statistics-and-facts/community-profiles/papanui-innes/innes-ward>)
 - 'Residential feel' to fit into the neighbourhood & incorporate some heritage design as this location is next to the Dudley Character Area. (<https://ccc.govt.nz/assets/Documents/Consents-and-Licences/resource-consents/Forms/Character-Areas/Dudley-Design-Guide-2019.pdf>)
 - Inclusive: day & night opening hours, available 6 or 7 days, adjustable learning/meeting spaces, that can be booked & utilized by everyone, residents can just be in the space (home away from home, our communities 'living room') without having to attend an activity/event.
 - Accessible: Onsite & street parking, location has bus stops on Shirley Road, multiple bus routes arriving/leaving at regular intervals.
 - Alternative Waipapa/Papanui Innes Community Board meetings location, so Innes ward residents can have easier access to participate. (<https://www.ccc.govt.nz/the-council/how-the-council-works/elected-members/community-boards/papanui-innes/>)
 - Civic Education: How does the Council work? What are the different Units for? How does the Community Board work? What do the different roles in Council/Community Board do? How do I engage with Council/Community Board? (<https://ccc.govt.nz/the-council/how-the-council-works>)
 - CCC 'Have Your Say' Consultation info/submission help sessions. (<https://ccc.govt.nz/the-council/consultations-and-submissions/haveyoursay/>)
 - Civic Defence: Emergency Location, community & home education sessions, emergency help/eco features: solar panels, rainwater harvesting system. (<https://ccc.govt.nz/services/civil-defence/about-civil-defence-emergency-management>)
 - Justice of the Peace (JP) Clinic: Witness signatures and documents, certify document copies, hear oaths, declarations, affidavits or affirmations as well as sign citizenship, sponsorship or rates rebates applications. (<https://my.christchurchcitylibraries.com/justice-of-the-peace-jps/>)
 - Citizens Advice Bureau: Help people to know and understand their rights and obligations and how to use this information to get the best outcomes. Satellite clinic? Weekly sessions? (<https://www.cab.org.nz/location/cab-christchurch-city>)
 - Centre 'Shielded Site': Tool for victims of abuse to ask for help, without fear of it showing up in their browser's history or an abusive partner ever seeing it. Send a confidential message through our 'Shielded Site' feature. (<https://shielded.co.nz/>)
 - NGOs Connect: Connecting residents with local Community Trusts/Support Services/Community Support Workers.
- For more info/list of potential 'learning space' users: <https://www.10shirleyroad.org.nz/ccc-10-shirley-road-consultation-feedback/>

'Shirley Road Central': The idea for this group came about while advocating for a new centre at 10 Shirley Road. We can't keep waiting for it to be built, because what could happen inside this building, is needed now: a citizen hub for community connections, community directory, sharing resources, promoting activities/events/organisations, community education...so instead of waiting for a 'physical' building to be built, we are creating an online community first, to connect communities around Shirley Road: Shirley, Dallington, Richmond, Edgeware, St Albans & Mairehau. 'Shirley Road Central' Website: <http://www.shirleyroadcentral.nz/>
Facebook Page: <https://www.facebook.com/shirleyroadcentral/> (online directory & community education)
Facebook Group: <https://www.facebook.com/groups/shirleyroadcentral/> (online noticeboard & community discussions)

October 2020 | CCC 10 Shirley Road Consultation Feedback

<https://www.10shirleyroad.org.nz/ccc-10-shirley-road-consultation-feedback/>
<https://www.10shirleyroad.org.nz/wp-content/uploads/2020/10/PapanuiInnes10ShirleyRoadOct2020JoannaGould.pdf>

April 2020 | CCC Draft Annual Plan 2020-2021 Feedback

<https://www.10shirleyroad.org.nz/ccc-draft-annual-plan-2020-2021-feedback/>
<https://www.10shirleyroad.org.nz/wp-content/uploads/2020/04/CCCDraftAnnualPlan2020JoannaGould.pdf>

June 2019 | CCC Draft Strategy for Arts and Creativity 2019-2024

<https://www.10shirleyroad.org.nz/toi-otautahi-christchurch-arts-strategy/>
<https://www.10shirleyroad.org.nz/wp-content/uploads/2020/04/CCCDraftArtsStrategyJune2019JoannaGould.pdf>

March 2019 | CCC Draft Annual Plan 2019-2020

<https://www.10shirleyroad.org.nz/wp-content/uploads/2019/08/CCCDraftAnnualPlanMar2019JoannaGould.pdf>

February 2019 | CCC Community Centre Network Plan

<https://www.10shirleyroad.org.nz/community-facilities-network-plan/>
<https://www.10shirleyroad.org.nz/wp-content/uploads/2019/08/ChchCommCentreNetworkPlanJoannaGould.pdf>
https://christchurch.infocouncil.biz/Open/2019/07/SOC_20190731_AGN_3438_AT.PDF 10. Community Facilities Network Plan

October 2018 | Richmond Community Needs Analysis

<https://www.10shirleyroad.org.nz/richmond-community-needs-analysis/>
<https://www.10shirleyroad.org.nz/wp-content/uploads/2021/04/RichmondResearchJoannaGould.pdf>
<https://www.10shirleyroad.org.nz/wp-content/uploads/2021/04/Richmond-Community-Needs-Analysis-Report.pdf>

April 2018 | Shirley Community Centre Ideas

<https://www.10shirleyroad.org.nz/imagine/>
<https://www.10shirleyroad.org.nz/shirley-community-centre-ideas/>
<https://www.10shirleyroad.org.nz/wp-content/uploads/2018/04/10ShirleyRoadChristchurchIdeasbyJoannaGould.pdf>



Joanna Gould | 5 Cargill Place, Richmond, Christchurch 8013 | 021 132 6328

E: joanna@10shirleyroad.org.nz | W: www.10shirleyroad.org.nz
FP: www.facebook.com/ShirleyCentre10ShirleyRoad/ | FG: www.facebook.com/groups/www.10shirleyroad.org.nz/

E: joanna@riseuprichmond.nz | W: www.riseuprichmond.nz
FP: www.facebook.com/RiseUpRichmond/ | FG: www.facebook.com/groups/2070060349907745/

E: joanna@getcreativechristchurch.nz | W: www.getcreativechristchurch.nz
FP: www.facebook.com/GetCreativeChristchurch/ | FG: www.facebook.com/groups/299724980619778



1. Shirley Centre | Location

1.1 Shirley Centre | Location:

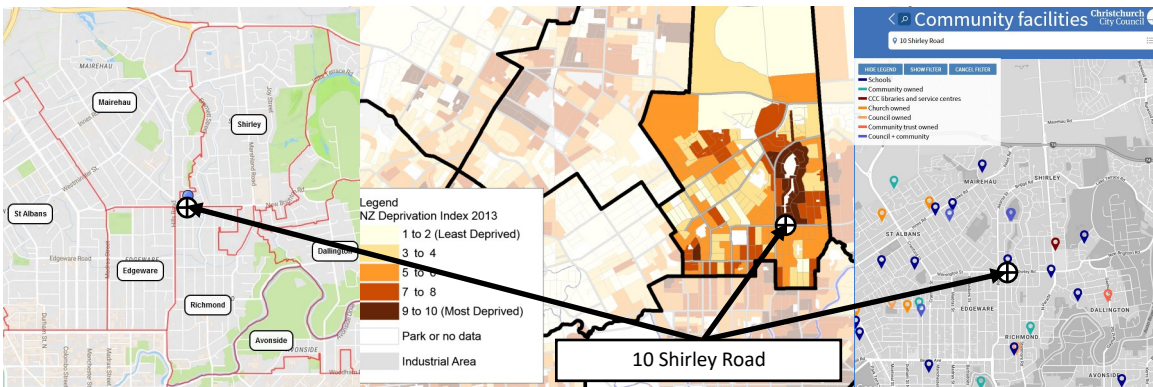
Suburbs surrounding 10 Shirley Road, Innes Ward Deprivation Index, SmartView Community Facilities

- Suburbs surrounding 10 Shirley Road: Shirley, Dallington, Richmond, Edgware, St Albans & Mairehau
- Innes Ward Deprivation Index

<https://ccc.govt.nz/culture-and-community/statistics-and-facts/community-profiles/papanui-innes/innes-ward>

- SmartView Community Facilities

<https://smartview.ccc.govt.nz/map/layer/communityfacility#//@172.65048,-43.51277,16>



1.2 Shirley Centre | Location:

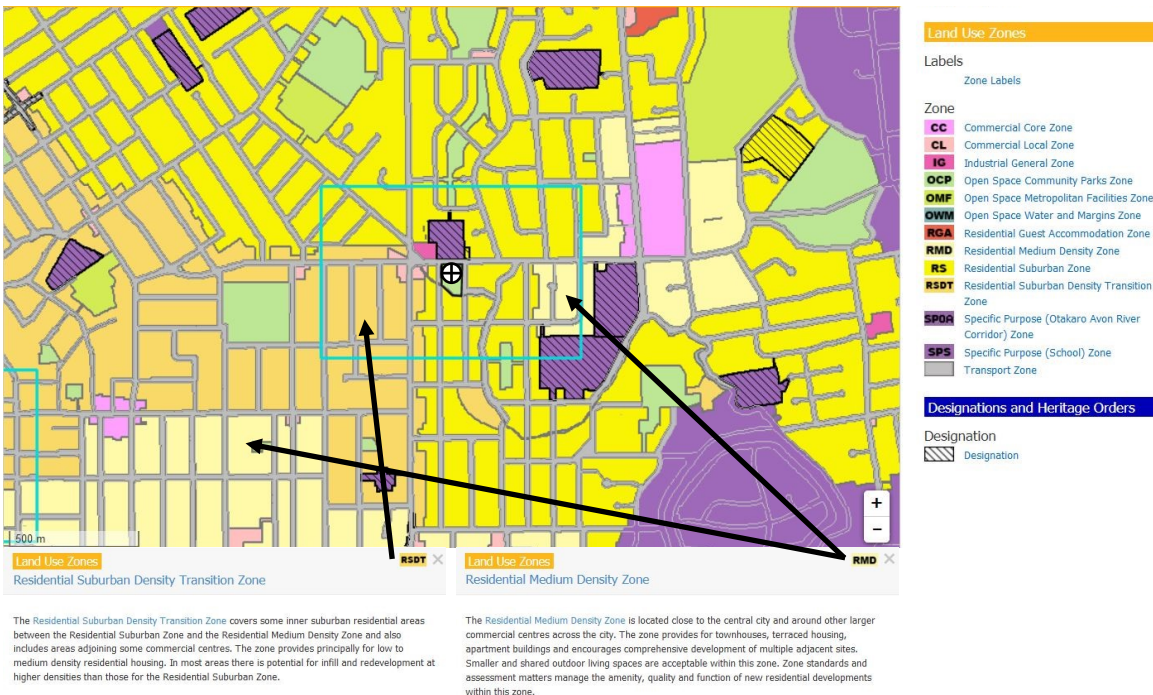
Projected Population, CCC District Planning Maps 25 & 32

“Projected population: 2013 to 2043. This [Innes] ward's population is projected to increase from an estimated 23,300 at 30 June 2013 to 31,200 by 30 June 2043. This is an overall increase of 34 percent. For Christchurch City as a whole, the population is projected to increase by 22 percent over the same period, from 356,700 to 436,800.”

<https://ccc.govt.nz/culture-and-community/statistics-and-facts/community-profiles/papanui-innes/innes-ward/>

https://districtplan.ccc.govt.nz/linkedcontent/planningmaps/PlanningMaps_25.pdf

https://districtplan.ccc.govt.nz/linkedcontent/planningmaps/PlanningMaps_32.pdf



1.3 Shirley Centre | Location:

CCC & Ōtautahi Community Housing Trust, Kāinga Ora (Housing New Zealand)

- CCC & Ōtautahi Community Housing Trust

Complex: 8, Total Units: 152

- Kāinga Ora (Housing New Zealand)

1 Bed: 40, 2 Bed: 77, 3 Bed: 23, 4 Bed: 4, 5 Bed: 7

Total Properties = 151, Total Bedrooms = 314

<https://oursocialhousing.nz/wards/innes/>

<https://oursocialhousing.nz/locations/>

- Kāinga Ora (Housing New Zealand)

Dallington: 38, Edgware: 53, Mairehau: 45, Mairehau North: 2, Richmond North:

63, Richmond South: 91, Shirley East: 153, Shirley West: 276, St Albans East: 25,

St Albans West: 2. Total Properties = 748

<https://kaingaora.govt.nz/assets/Publications/OIAs-Official-Information-Requests-September-2019/10-Sep-2019-State-housing-in-Christchurch.pdf>



Joanna Gould | 5 Cargill Place, Richmond, Christchurch 8013 | 021 132 6328

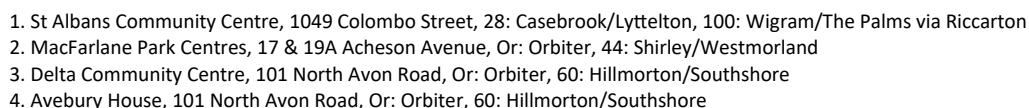
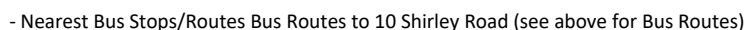
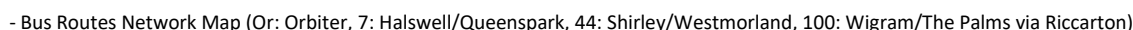
E: joanna@10shirleyroad.org.nz | W: www.10shirleyroad.org.nz/
FP: www.facebook.com/ShirleyCentre10ShirleyRoad/ | FG: www.facebook.com/groups/www.10shirleyroad.org.nz/

E: joanna@riseuprichmond.nz | W: www.riseuprichmond.nz/
FP: www.facebook.com/RiseUpRichmond/ | FG: www.facebook.com/groups/2070060349907745/

E: joanna@getcreativechristchurch.nz | W: www.getcreativechristchurch.nz/
FP: www.facebook.com/GetCreativeChristchurch/ | FG: www.facebook.com/groups/299724980619778



1.4 Shirley Centre | Location:



Joanna Gould | 5 Cargill Place, Richmond, Christchurch 8013 | 021 132 6328
E: joanna@10shirleyroad.org.nz | W: www.10shirleyroad.org.nz/
www.facebook.com/ShirleyCentre10ShirleyRoad/ | Fg: www.facebook.com/groups/www.10shirleyroad.org.nz/
E: joanna@riseuprichmond.nz | W: www.riseuprichmond.nz/
FP: www.facebook.com/RiseUpRichmond/ | Fg: www.facebook.com/groups/2070060349907745/
E: joanna@getcreativechristchurch.nz | W: www.getcreativechristchurch.nz/
FP: www.facebook.com/GetCreativeChristchurch/ | Fg: www.facebook.com/groups/299724980619778



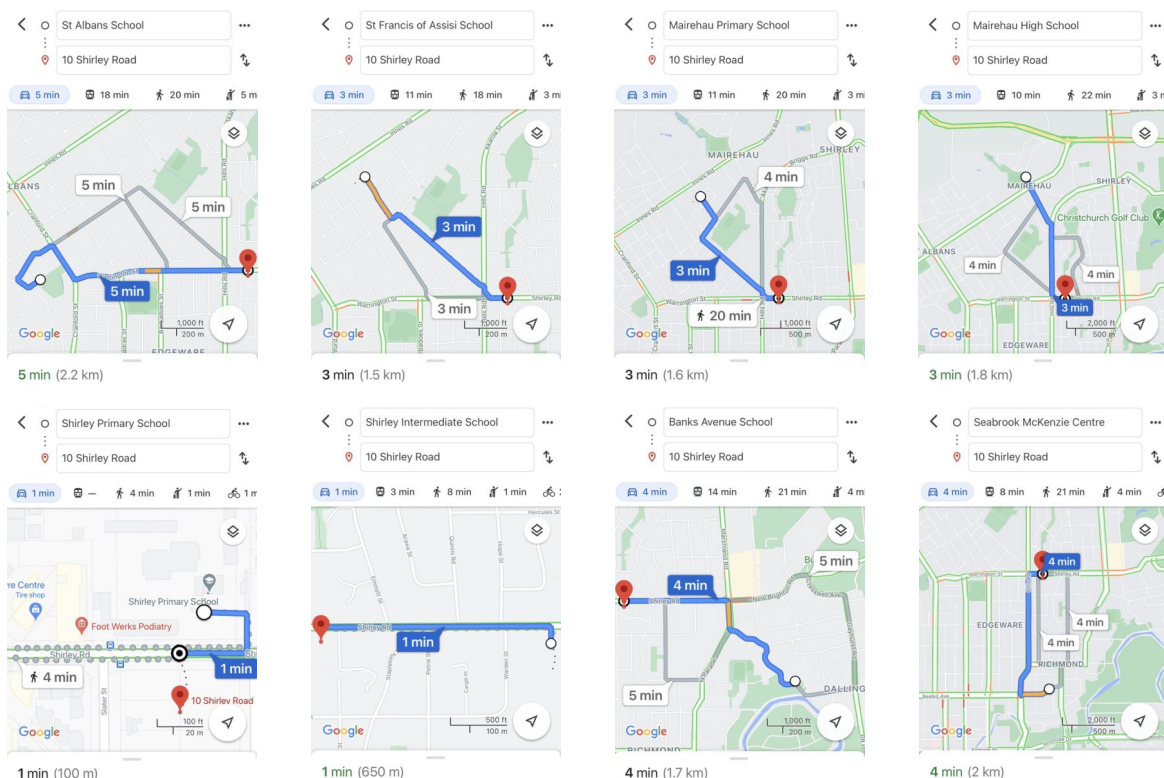
GET
creative
CHRIST
CHURCH

1. Shirley Centre | Location

1.5 Shirley Centre | Location:

Route from Local Schools to 10 Shirley Road, Local Schools Info, Local Schools Development Plans

- Route from Local Schools to 10 Shirley Road



- Local Schools Info

1. St Albans School | <https://www.stalbans.school.nz/>
Decile:8, Total School Roll:555, European:344, Maori:71, Pacific:23, Asian:99, MELAA:13, Other:5
2. St Francis of Assisi School | <https://stfrancis.chh.school.nz/>
Decile:7, Total School Roll:336, European:228, Maori:35, Pacific:16, Asian:47, MELAA:10, Other:0
3. Mairehau Primary School | <https://www.mps.school.nz/>
Decile:6, Total School Roll:428, European:268, Maori:89, Pacific:28, Asian:33, MELAA:10, Other:0
4. Mairehau High School | <https://www.mairehau.school.nz/>
Decile:4, Total School Roll:383, European:199, Maori:107, Pacific:31, Asian:38, MELAA:4, Other:4
5. Shirley Primary School | <https://shirleyprimary.school.nz/>
Decile:3, Total School Roll:309, European:128, Maori:69, Pacific:41, Asian:52, MELAA:17, Other:2
6. Shirley Intermediate School | <http://www.sis.school.nz/Home/>
Decile:4, Total School Roll:146, European:68, Maori:34, Pacific:20, Asian:17, MELAA:7, Other:0
7. Banks Avenue School | <https://www.banksave.school.nz/>
Decile:4, Total School Roll:353, European:235, Maori:70, Pacific:22, Asian:21, MELAA:4, Other:1
8. Seabrook McKenzie Centre | <https://www.seabrookmckenzie.net/>
Total School Roll:8, European:7, Maori:0, Pacific:0, Asian:0, MELAA:1, Other:0
Total Number of School Students = 2,518
Total European:1477, Total Maori:475, Total Pacific:181, Total Asian:307, Total MELAA:66, Total Other:12

- Local Schools Development Plans

1. St Albans School
"Another \$5m will also be used to fund short-term classrooms at schools facing severe pressure from rapid roll growth. This will include the development of two new classrooms St Albans School."
<https://www.stuff.co.nz/national/education/123454992/government-announces-funding-boost-for-south-island-schools-with-skyrocketing-rolls>
4. Mairehau High School
"The decile 4 school's roll is expected to grow to 500 pupils, and the master plan will allow for a roll build of up to 800."
<https://www.odt.co.nz/star-news/star-christchurch/145-million-development-high-school>
5. Shirley Primary School
"There will be an obstacle course and an asphalt track around the outside of the field for scootering...There will also be tunnels and two basket swings." Landscaping Stage Two
<https://hail.to/shirley-primary-school/publication/4V9kKHc/article/VzysgZW>
6. Shirley Intermediate School
Master Planning for a New School, <http://shirleyint.ultranet.school.nz/Web/55/>
7. Banks Avenue School
"The \$14 million building will be on the former Shirley Boys' High School site on North Parade...the new building would allow the school to increase its roll from 375 to "a master plan roll of 600."
<https://www.stuff.co.nz/national/education/124354422/christchurch-school-rebuild-to-begin-five-years-behind-schedule>
<https://www.banksave.school.nz/our-new-school-update.html>



Joanna Gould | 5 Cargill Place, Richmond, Christchurch 8013 | 021 132 6328

E: joanna@10shirleyroad.org.nz | W: www.10shirleyroad.org.nz/
 FP: www.facebook.com/ShirleyCentre10ShirleyRoad/ | FG: www.facebook.com/groups/www.10shirleyroad.org.nz/

E: joanna@riseuprichmond.nz | W: www.riseuprichmond.nz/
 FP: www.facebook.com/RiseUpRichmond/ | FG: www.facebook.com/groups/2070060349907745/

E: joanna@getcreativechristchurch.nz | W: www.getcreativechristchurch.nz/
 FP: www.facebook.com/GetCreativeChristchurch/ | FG: www.facebook.com/groups/299724980619778



1.6 Shirley Centre | Location:

EnviroSchools, CCC Have Your Say Consultation: Engagement Feedback for 10 Shirley Road Report

- EnviroSchools

“Our kaupapa guides all that we do and is embodied in five guiding principles that underpin the whole EnviroSchools journey:

1. Empowered Students: are enabled to participate in meaningful ways in the life of their early childhood centre or school. Their unique perspectives are valued for the knowledge and insight that they bring, and they are supported to take action for real change.
2. Learning for Sustainability: recognises the types of teaching and learning that use connecting experiences to develop holistic and ecological perspectives, foster student enquiry, decision-making, action, and reflection, and create sustainable outcomes.
3. Māori Perspectives: honours the status of tangata whenua in this land and the value of indigenous knowledge and wisdoms in enriching and guiding learning and action.
4. Respect for the Diversity of People and Cultures: acknowledges the unique gifts, contributions and perspectives of individuals and groups, reinforcing the value of participatory decision-making and collaborative action.
5. Sustainable Communities: act in ways that nurture people and nature, now and in the future, to maintain the health and viability of our environment, society, culture and economy."

<https://enviroschools.org.nz/about-us/>

<https://enviroschools.org.nz/regions/canterbury/>

<https://enviroschools.org.nz/regions/canterbury/participating-schools/>

1.7 Shirley Centre | Location:

CCC Have Your Say Consultation: Engagement Feedback for 10 Shirley Road Report

CCC Have Your Say Consultation: Your Ideas wanted for 10 Shirley Road

<https://ccc.govt.nz/the-council/consultations-and-submissions/haveyoursay/show/334>

https://christchurch.infocouncil.biz/Open/2020/11/PICB_20201120_AGN_4525_AT.htm#PDF3 Attachment 30249 2

- "We have asked and talked to you about this before, and we acknowledge the work that has been done."

There are many residents who have voted for community board members & councillors, signed petitions, filled in surveys, attended meetings, made written/verbal submissions to the CCC LTP & Annual Plan...who feel like their voice is never listened to.

How many ways/times do residents have to keep asking for a new centre to be built on 10 Shirley Road?

Online Petition: <https://www.change.org/p/christchurch-city-council-a-community-centre-for-north-richmond-shirley-mairehau-edgeware-st-albans-east>

Online Petition Comments: <https://www.change.org/p/christchurch-city-council-a-community-centre-for-north-richmond-shirley-mairehau-edgeware-st-albans-east/c>

- "Due to Council's financial situation it is not expected in the short term that funding will be available, however the Board would like to see the site being used by the community."

1. What happened to the plan for a "Council funded facility at 10 Shirley Road utilising the Tranche 1 allocation of \$2.52m"?
2. Where are the development contributions for our suburbs "to recover the costs of providing future growth capacity for facilities such as swimming pools, sports centres, libraries", being invested back into our communities?
3. Our suburbs have had a significant increase to our population due to new residential/infill housing/social housing since the CCC District Plan has been changed after the earthquakes, but no new community facilities are on budget in the proposed CCC LTP plan?
4. Could the sale proceeds of the "potential Disposal of Council Owned Properties": 114 Hills Road, 219A Hills Road, 79 Slater Street & 81 Slater Street, be invested in building a new centre at 10 Shirley Road?

- Potential Disposal of Council Owned Properties Interactive Map:

<https://gis.ccc.govt.nz/portal/apps/webappviewer/index.html?id=63be645c6b8f4f4ab2a3e8f2627949f4>

- Suggestion: Community Gardens/Food Forest?

We already have two well established local community gardens:

<https://www.facebook.com/groups/macfarlaneparkcommunitygarden/> (by Jebson Street, public toilets & water available)

<https://www.facebook.com/RichmondCommunityGardenAvebury/> (by Avebury House, public toilets & water available)

A food forest needs to be connected to community gardens/schools. Trees need to come with care instructions & promote when fruit is ready to eat. Who will be responsible to water/feed/prune/treat against diseases/harvest the fruit?

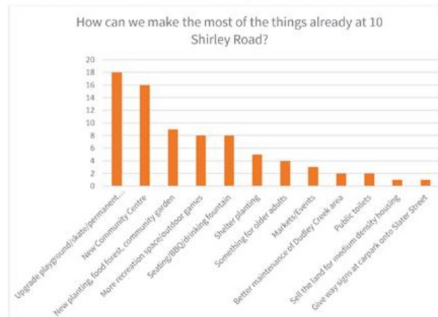
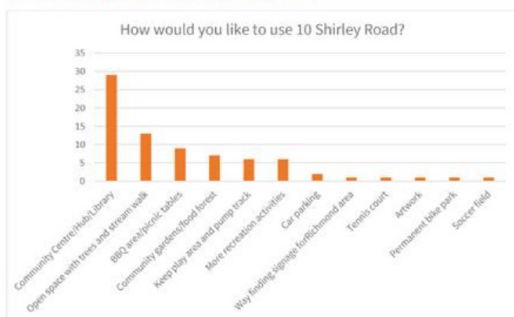
- Suggestion: Permanent Pump Track?

Shirley Primary School Facebook Page, Landscaping Update Stage 2 (across the road from the 10 Shirley Road site)

"There will be an obstacle course and an asphalt track around the outside of the [school] field for scootering. There will also be tunnels and two basket swings." <https://www.facebook.com/157397280992606/posts/3792997170765914>

- Suggestion: Upgrade Playground, New Picnic Tables/Seating/Water Fountain/Public Toilets?

These suggestions can all be incorporated into a new landscape design, to complement a new centre being built at 10 Shirley Road.



Joanna Gould | 5 Cargill Place, Richmond, Christchurch 8013 | 021 132 6328

E: joanna@10shirleyroad.org.nz | W: www.10shirleyroad.org.nz/
 P: www.facebook.com/ShirleyCentre10ShirleyRoad/ | FG: www.facebook.com/groups/www.10shirleyroad.org.nz/

E: joanna@riseuprichmond.nz | W: www.riseuprichmond.nz/

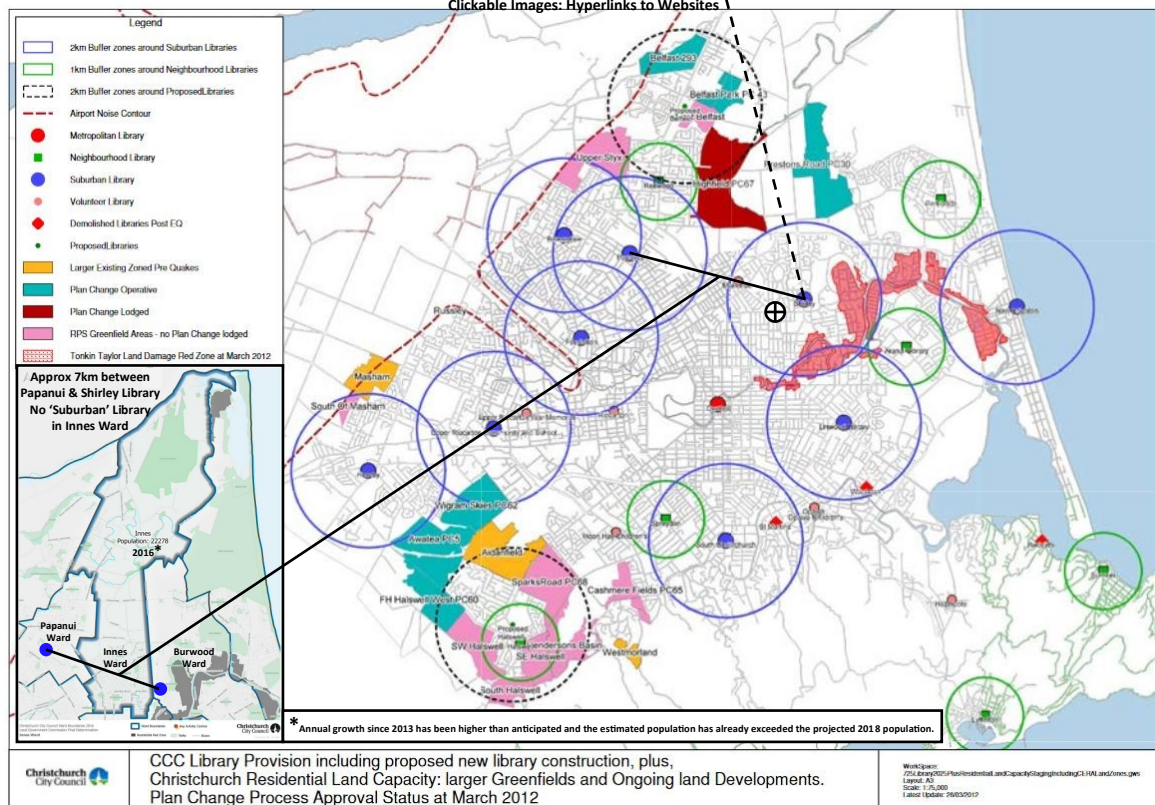
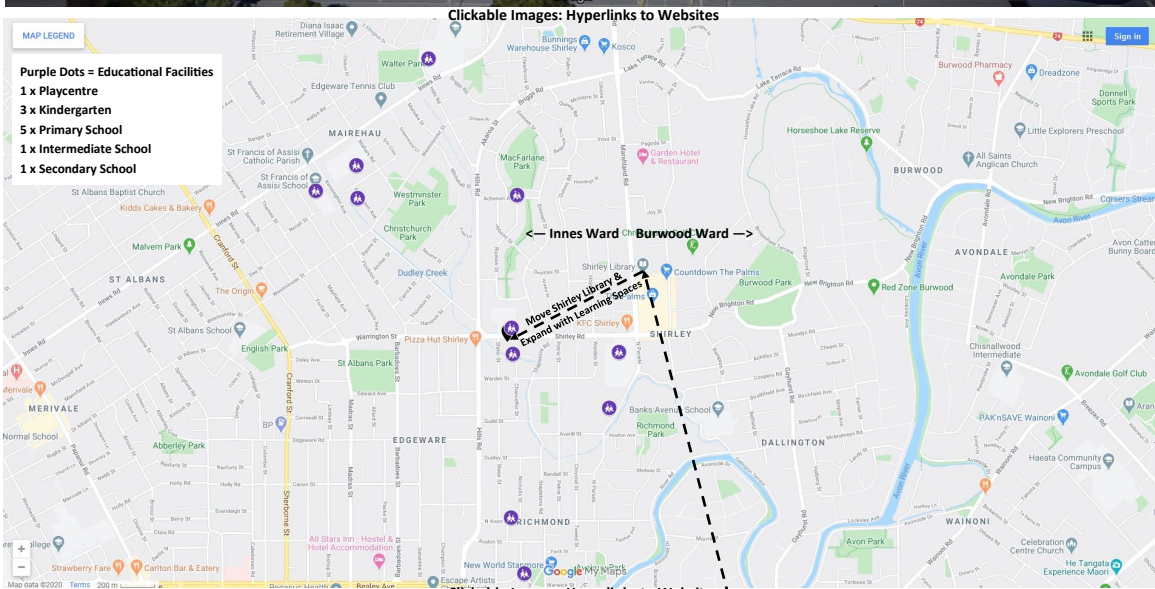
FP: www.facebook.com/RiseUpRichmond/ | FG: www.facebook.com/groups/2070060349907745/

E: joanna@getcreativechristchurch.nz | W: www.getcreativechristchurch.nz/

Facebook: www.facebook.com/GetCreativeChristchurch/ | Instagram: www.instagram.com/getcreativechristchurch/ | Twitter: [getcreativecc](https://twitter.com/getcreativecc) | Facebook: www.facebook.com/groups/299724980619778



GET
creative
CHRIST
CHURCH



Joanna Gould | 5 Cargill Place, Richmond, Christchurch 8013 | 021 132 6328
joanna@10shirleyroad.org.nz | www.10shirleyroad.org.nz/ | www.facebook.com/groups/www.10shirleyroad.org.nz/
joanna@riseuprichmond.nz | www.riseuprichmond.nz/ | www.facebook.com/groups/2070060349907745/
joanna@getcreativechristchurch.nz | www.getcreativechristchurch.nz/ | www.facebook.com/GetCreativeChristchurch/



2. Shirley Centre | Learning Libraries

The CCC has set the bar high on how to create architectural award winning libraries/community centres:

- 2019 Commercial Project Awards - Project: Turanga - Christchurch Central Library & Project: Woolston Community Library
[https://www.commercialprojectawards.co.nz/CPA/Entries%20and%20Results/2019 Results/Civic/CPA/Results/Results 2019/Civic.aspx?](https://www.commercialprojectawards.co.nz/CPA/Entries%20and%20Results/2019%20Results/Civic/CPA/Results/Results%202019/Civic.aspx?)
- 2018 Commercial Project Awards - Project: Matuku Takotako: Sumner Centre
[https://www.commercialprojectawards.co.nz/CPA/Entries%20and%20Results/2018 Results/Civic/CPA/Results/Results 2018/Civic Results.aspx?](https://www.commercialprojectawards.co.nz/CPA/Entries%20and%20Results/2018%20Results/Civic/CPA/Results/Results%202018/Civic%20Results.aspx?)
- 2017 Commercial Project Awards - Project: Mt Pleasant Memorial Community Centre & Project: Te Hapua: Halswell Centre
[https://www.commercialprojectawards.co.nz/CPA/Entries%20and%20Results/2017 Results/Civic/CPA/Results/Results 2017/Civic Results.aspx?](https://www.commercialprojectawards.co.nz/CPA/Entries%20and%20Results/2017%20Results/Civic/CPA/Results/Results%202017/Civic%20Results.aspx?)

"Christchurch City Libraries has grown from a single room opened at the city's Mechanics Institute in 1859...The library's early customers were focused on reading for self-improvement and education, unlike today's library customers who also use its resources for leisure and recreation." (<https://heritage.christchurchcitylibraries.com/Archives/52/Library150/History/>)
- <https://heritage.christchurchcitylibraries.com/Archives/52/Library150/Timeline/>
- <https://my.christchurchcitylibraries.com/the-mechanics-institute/>

What if CCC also set the example for what happens inside? What happens inside the library has more impact on our communities. How? By creating Learning Libraries: citizen hubs where community education is the centre & the learning spaces are utilised by the Govt/CCC/Organisations as a central outreach to the residents in the surrounding communities. Learning Libraries are 'schools in the community for everyone, all ages & stages of life are welcome.'

"The Council is committed to supporting education as a lifelong learning process with resources for parents, teachers, students and the public." (<https://ccc.govt.nz/the-council/learning-resources>) "Christchurch City Libraries can help you explore new learning opportunities. Our librarians can offer assistance and show you key resources and our libraries provide spaces for you to access computers and study." (<https://my.christchurchcitylibraries.com/lifelong-learning/>)

"The accessible physical space of the library is not the only factor that makes it work well as social infrastructure. The institution's extensive programming, organized by a professional staff that upholds a principled commitment to openness and inclusivity, fosters social cohesion among clients who might otherwise keep to themselves...Why have so many public officials and civic leaders failed to recognize the value of libraries and their role in our social infrastructure? Perhaps it's because the founding principle behind the library—that all people deserve free, open access to our shared culture and heritage, which they can use to any end they see fit—is out of sync with the market logic that dominates our time...Their core mission is to help people elevate themselves and improve their situation. Libraries do this, principally, by providing free access to the widest possible variety of cultural materials to people of all ages, from all ethnicities and groups."

"Palaces for the People" By Eric Klinenberg, <https://christchurch.bibliocommons.com/item/show/1056368037>

Community Education: "Well-being WOF/Tool Kit"

- 'Wellness Warrant Of Fitness' Submission, June 2018, www.mentalhealth.inquiry.govt.nz
<https://www.10shirleyroad.org.nz/wp-content/uploads/2021/04/WellnessWarrantOfFitness.pdf>
- "The Reading in Mind book scheme provides selected books and other resources (e-books, DVDs and CDs) on a wide range of mental health and wellbeing topics. If you or someone you know is experiencing a mental health issue like anxiety, depression, post-traumatic stress disorder or worry, reading books on the issue can help you better manage your mental health and well being."
<https://www.pegasus.health.nz/your-health/useful-links-resources/reading-in-mind/>
- HealthInfo: 'A-Z health topics', <https://www.healthinfo.org.nz/index.htm?A-Z-health-topics-A-1.htm>
- HealthInfo: 'Living well and staying healthy', <https://www.healthinfo.org.nz/index.htm?Keeping-healthy.htm>
- CHDB Mental Health, <https://www.cdhb.health.nz/health-services/service/mental-health-addictions/>

Community Education: "While You Wait"

How can we help people to deal with being put on a 'waiting list'? What small steps can they take each day to be proactive? What skills could they learn to distract themselves from focusing on their place/position on the 'waiting list'? What opportunities are there in the community to help them through this stage?

1. Health: (Referrals/Assessments) books, support groups, website links, Facebook pages/groups, medication info
2. Housing: (Get Social Housing/Find Rental/Buy House) budgeting skills, rental/property market info, savings/mortgage info
3. Employment: careers advice (<https://www.careers.govt.nz/>), CV preparation, networking, self-employment info, WINZ info

Community Education: "Climate Change 101"

- Instead of protesting, start promoting! CCC needs to lead by example, showing residents that CCC decisions are focused first on buying/reusing/repurposing/recycling local.
- "strikers presented the Mayor with three local demands...they wanted increased funding for climate education in schools..."
<https://www.stuff.co.nz/environment/climate-news/124825753/christchurch-climate-strike-organisers-hopeful-after-meeting-with-mayor> (see Page 5, 1.6 Shirley Centre | Location: EnviroSchools)
- Climate change is a big picture issue. How can we break it down into achievable practical day to day tasks/changes to the way we live in Christchurch?
- CCC 'Learning Through Action', can these programmes be made available for every resident?
<https://ccc.govt.nz/the-council/learning-resources/learning-through-action/list-of-programmes/>
- 'Live Local, Go Local': promoting buying/renting home near where you work/go to school/play
- 'Where we live versus where we work' Christchurch: <https://storymaps.arcgis.com/stories/6f8b5f981ad34f11bedaf1725e9cb698>
- Eco Homes: how to add more eco friendly features to your existing home? Promote achievable ways: insulation, heating, lights, sensors, sorting bins, eco central, recycle/donate items, toilet/shower water usage, ev charging station, solar power, rainwater collection, washing car, watering garden, purchasing decisions, clothing purchases/donate/recycle/fix
- Transport: educate/promote different types of transport, providing ev charging stations at civic facilities, bike stands, connecting bus routes to where people go: civic facilities, libraries, community centres, swimming pools.
- Promotional materials: images/info that residents/community groups can share on their social media posts to promote practical day to day tasks/changes to the way we live in Christchurch.



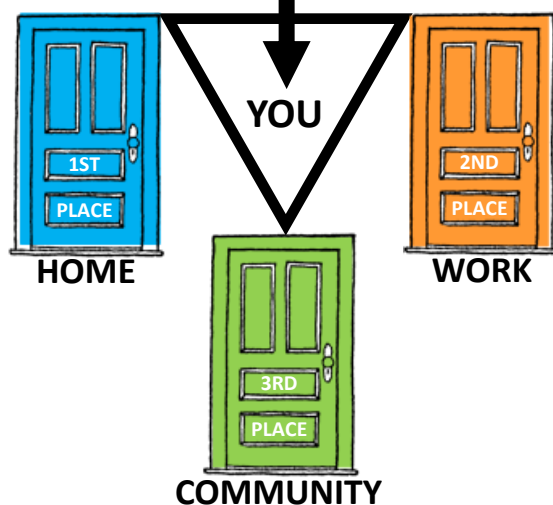
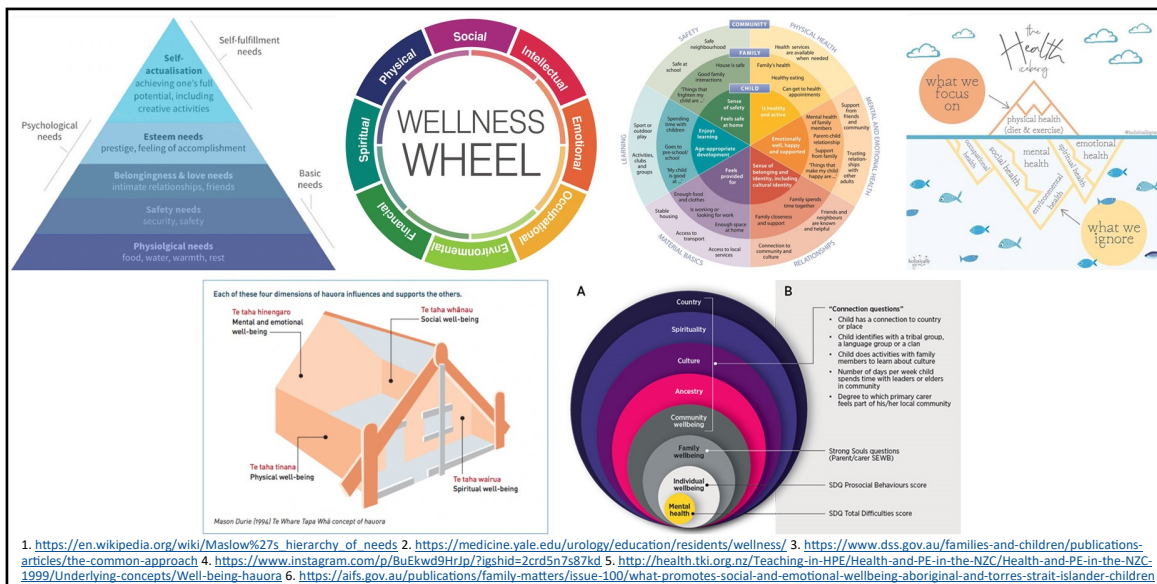
Joanna Gould | 5 Cargill Place, Richmond, Christchurch 8013 | 021 132 6328

PP: joanna@10shirleyroad.org.nz | W: www.10shirleyroad.org.nz/
PP: www.facebook.com/ShirleyCentre10ShirleyRoad/ | FG: www.facebook.com/groups/www.10shirleyroad.org.nz/

E: joanna@riseuprichmond.nz | W: www.riseuprichmond.nz/
E: joanna@getcreativechristchurch.nz | FG: www.facebook.com/groups/2070060349907745/

PP: www.facebook.com/GetCreativeChristchurch/ | W: www.getcreativechristchurch.nz/
PP: www.facebook.com/GetCreativeChristchurch/ | FG: www.facebook.com/groups/299724980619778





In community building, the third place is the social surroundings separate from the two usual social environments of home ("first place") and the workplace ("second place"). Examples of third places would be environments such as churches, cafes, clubs, public libraries, bookstores or parks. https://en.wikipedia.org/wiki/Third_place In his influential book *The Great Good Place*, Ray Oldenburg (1989, 1991) argues that third places are important for civil society, democracy, civic engagement, and establishing feelings of a sense of place. Third places, then, are "anchors" of community life and facilitate and foster broader, more creative interaction. In other words, "your third place is where you relax in public, where you encounter familiar faces and make new acquaintances."

SOCIAL PLACES: CONNECTIONS & NETWORKS

EDUCATIONAL	EDUCATIONAL & ENTERTAINMENT	ENTERTAINMENT
PreSchool Kindergarten Primary Intermediate Secondary Polytechnic University	Community Centre Learning Centre Library with Learning Spaces	Sports Club Night Club Casino Pub Cafe Restaurant Church

Why don't we use the CCC Libraries/Citizen Hubs facilities to work together with different Ministry's/Govt Departments/NGOs/community workers, as an outreach to provide education and connect those in the community with the right resources at the right time?

SHIRLEY CENTRE: 10 SHIRLEY ROAD LIBRARY & LEARNING SPACES

GOVERNMENT	LOCAL GOVERNMENT	NGOs
Ministry of ... Department of ...	Council Community Boards	Trusts/Groups Community Workers

IDENTITY | WELL-BEING | LEARNING

Citizen Hub for: community education & learning, 'DIY How To' civic engagement & education sessions, civil defence education, citizenship education. Connecting NGOs with residents through 'Hello my name is...' intro sessions based in the learning spaces, 'go where the people are'.



Joanna Gould | 5 Cargill Place, Richmond, Christchurch 8013 | 021 132 6328
joanna@10shirleyroad.org.nz | www.10shirleyroad.org.nz/ | www.facebook.com/groups/www.10shirleyroad.org.nz/
joanna@riseuprichmond.nz | www.riseuprichmond.nz/ | www.facebook.com/groups/2070060349907745/
joanna@getcreativechristchurch.nz | www.getcreativechristchurch.nz/ | www.facebook.com/GetCreativeChristchurch/

"Have you ever thought about the legacy you're leaving your family, your community, your world? Most people never give it a second thought. But a legacy is something you're creating every day, whether you realize it or not. What exactly is a legacy? Webster's Dictionary defines 'legacy' as 'something transmitted by or received from an ancestor or predecessor or from the past.'" https://www.huffpost.com/entry/what-kind-of-legacy-are-y_b_951633

My connection to 10 Shirley Road is literally about births & deaths. I attended antenatal classes at the centre over 13 years ago. My mum, Marie Duggan, attended the NZ Society of Genealogists - Canterbury Branch, where she spent many hours researching. Over 30 years ago, we worked together to research & create a family history book on Charles Duggan, my dad's first ancestor that arrived in New Zealand. "On 25th October 1862 the ship the 'Chariot of Fame' left England for Lyttelton. Charles Duggan was a cabin passenger (paying passenger). The 'Chariot of Fame' arrived in Lyttelton on 28th January 1863. The Mutual Improvement Society was founded in Christchurch in 1867 and Charles was elected librarian." from our 'Charles Duggan: Family History' book. My mum passed away in November last year, after a courageous journey for over two years with terminal cancer. My dad gave me her family history folders & the original family history book on Charles Duggan. I was only a teenager when I helped Mum turn her notes into a book, with my newly acquired desktop publishing skills. So last weekend I decided to reread his story & started researching online...<https://collection.canterburymuseum.com/objects/710599/macdonald-dictionary-record-charles-duggan>

“10. Time Capsule or Deposit for the rebuild of the St Albans Community Centre

5.4 The former St Albans Library building (1921) is of heritage significance on account of its association with the history of the early St Albans Mutual Improvement Association.

5.6 St Albans library service is one of the earliest suburban library services in Christchurch having started in 1867 on a different site (the central library was founded in 1959 (<https://heritage.christchurchcitylibraries.com/Archives/52/Library150/Timeline/>)) and operating for 76 years.”

https://christchurch.infocouncil.biz/Open/2018/12/PICB_20181207_AGN_2446_AT.htm#PDF2_ReportName_21179

“Time Capsule Releases Contents: It contained a handwritten letter from the St Albans Mutual Improvement Association, outlining the history of the association and why it needed a new building. The letter contained a list of the members present at the first meeting.” St Albans News Oct/Nov 2018, <https://drive.google.com/file/d/1nhmLS6OX7itiVRLrWLCkUkzLqQovvvBI/view>

“This Library was founded on May 24th 1867 as a result of a public meeting held in the house of Mr David Lewis and was then described and known as The St Albans Mutual Improvement Association, the object of such Society being as recorded in the minutes. ‘The mutual mental improvement of its members.’ Classes for special studies of various subjects being formed, lectures on current topics, readings and discussions were also a part of the means devised for the advancement of culture and general knowledge. The names of the first committee and officers of the Society were as follows:- Librarian: Mr C [Charles] Duggan”

<https://stalbens.gen.nz/wordpress/wp-content/uploads/2018/11/Letter-inside-bottle-.pdf>

"Celebrations as new community centre opens in St Albans...The original foundation stone that was salvaged when the original building on the site was demolished is featured in the community centre. The contents of a time capsule unearthed during the demolition of the former building have also been placed on the site of the new facility." <https://newsline.ccc.govt.nz/news/story/celebrations-as-new-community-centre-opens-in-st-albans>

I had already planned to go to the opening of the new St Albans Community Centre, but finding the connection to my ancestor the night before, it made for a proud moment as Charles Duggan's greatgreatgreatgranddaughter. It is not every day you get to listen to speeches about the history & the legacy that he played a part in, connecting our family to the St Albans community forever.

Our Christchurch ancestors created a place for learning, the original Shirley Primary School, then Shirley Community Centre at 10 Shirley Road, that became part of our communities identity and our own memories, until it was demolished in 2012.

This location is a very visible historic landmark at the beginning of Shirley Road. Leaving it empty without a community centre, is a constant reminder of what we have lost, that we have been forgotten & have no community legacy for the future generations.

“Be a good ancestor. Stand for something bigger than yourself. Add value to the Earth during your sojourn.” Marian Wright Edelman

Q. Land bank 10 Shirley Road or create a legacy?
A. Your vote can make a difference. Please support our local communities & vote for funding a new centre to be built on 10 Shirley Road. We have the opportunity now to be a part of creating the legacy we leave to our descendants now & in the future.



Joanna Gould | 5 Cargill Place, Richmond, Christchurch 8013 | 021 132 6328

E: joanna@10shirleyroad.org.nz | W: www.10shirleyroad.org.nz/
P: www.facebook.com/ShirleyCentre10ShirleyRoad/ | FG: www.facebook.com/groups/www.10shirleyroad.org.nz/

E: joanna@riseuprichmond.nz | W: www.riseuprichmond.nz/
 PG: www.facebook.com/riseuprichmond/
 FB: www.facebook.com/riseuprichmond/

FP: www.facebook.com/RiseUpRichmond/ | FG: www.facebook.com/groups/2070060349907745/
 F: inanna@getcreativechristchurch.nz | W: www.getcreativechristchurch.nz/

E: joanna@getcreativechristchurch.nz | W: www.getcreativechristchurch.nz/
 P: www.facebook.com/GetCreativeChristchurch/ | FG: www.facebook.com/groups/299724980619778



GET
creative
CHRIST
CHURCH