

Wayfinding Parklets - Ideas

Richmond Wayfinding Logo - 'Simple' Ideas

- Red & Black Canterbury Colours
 - International Symbol for "You Are Here"
 - Simple design, easy to create stencil for footpath
 - Add a number to identify where you are on the trail.
 - QR Code can be added horizontally or vertically
 - Link QR Code to 'Richmond Trail' on The Green Lab website, CCC website (<https://www.ccc.govt.nz/parks-and-gardens/>), ChristchurchNZ website (<https://www.christchurchnz.com/explore/activities-attractions>).
- Info can be added, could include history/houses/people/old maps, stories of the area, interactive part of the trail, scavenger hunt?



Richmond Wayfinding Signage - 'Medium' Ideas

- Bird House on a post: number on front, info on sides/roof. (<https://www.ana-white.com/woodworking-projects/build-cedar-birdhouse-2>)
- Bird Feeder on a post: number on front, info on sides/roof. (<https://www.ana-white.com/woodworking-projects/2-cedar-birdfeeder>)



Low cost project, great way to involve children & families. These could be painted so they are very visible & attract attention. Easy to identify the next stop on the trail. Randomly placed throughout the trail, to connect the 'Large' ideas & keep people following the trail to find the next marker. This area is already home to many different birds, adding a bird house brings the birds down closer to the people using the trail & adding a bird feeder is an interactive way people can help increase the bird population. Add info about each NZ bird species to a different bird house/feeder, link to the Department of Conservation website: (<https://www.doc.govt.nz/nature/native-animals/birds/birds-a-z/>) info about each bird/sound recordings/habitat etc.

Richmond Wayfinding Signage - 'Large' Ideas

- A4 size Signage at Richmond Community Gardens
- The Green Lab Pic 6, A3 size Signage, instead of a bell, could incorporate at bird house/feeder? to connect with the 'Medium' ideas & remind people that this 'Large' ideas signage is also part of the 'Richmond Trail'.
- The Green Lab Pic 11, wood engraved map of Richmond, showing local landmarks/streets, locations that are unlikely to change. Ability to add/remove transitional projects along the 'Richmond Trail' with a coloured marker?



Entranceway to the River Trail - Ideas

Picnic Table - Ideas

- Kiwi Wood Picnic Tables (<http://kiwiwood.co.nz/product-category/picnic-tables/>)
- Farmhouse Table (<https://www.ana-white.com/woodworking-projects/farmhouse-table-no-pocket-holes-plan>)
- Farmhouse Bench (<https://www.ana-white.com/woodworking-projects/farmhouse-bench-no-pocket-holes-version>)
- 8 Foot Picnic Table (<https://www.ana-white.com/woodworking-projects/8-foot-picnic-table>)



Arbor/Archway - Ideas

- Garden Arbor (<https://www.remodelaholic.com/garden-arbor-diy-building-plans/>)



Joanna Gould | 5 Cargill Place, Richmond, Christchurch 8013 | 021 132 6328
joanna@10shirleyroad.org.nz | www.10shirleyroad.org.nz
www.facebook.com/ShirleyCentre10ShirleyRoad/ | www.facebook.com/groups/www.10shirleyroad.org.nz
joanna@riseuprichmond.nz | www.riseuprichmond.nz
www.facebook.com/RiseUpRichmond/ | www.facebook.com/groups/2070060349907745/
joanna@getcreativechristchurch.nz | www.getcreativechristchurch.nz
www.facebook.com/GetCreativeChristchurch/ | www.facebook.com/groups/299724980619778/



The Green Lab - Ideas



Richmond Wayfinding Group - Walkabout Photos



Joanna Gould | 5 Cargill Place, Richmond, Christchurch 8013 | 021 132 6328
joanna@10shirleyroad.org.nz | www.10shirleyroad.org.nz
www.facebook.com/ShirleyCentre10ShirleyRoad/ | www.facebook.com/groups/www.10shirleyroad.org.nz/
joanna@riseuprichmond.nz | www.riseuprichmond.nz
www.facebook.com/RiseUpRichmond/ | www.facebook.com/groups/2070060349907745/
joanna@getcreativechristchurch.nz | www.getcreativechristchurch.nz
www.facebook.com/GetCreativeChristchurch/ | www.facebook.com/groups/299724980619778/





Original House - View facing Bridge

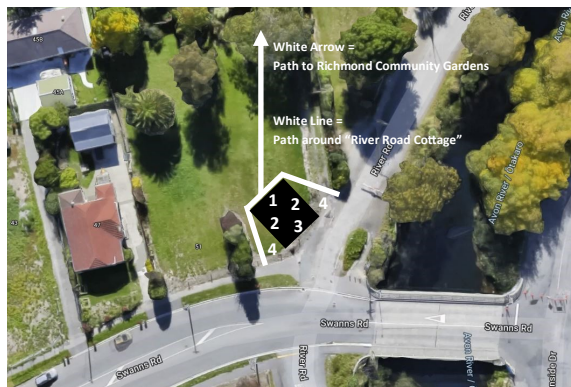


Original House - View from River Road



“River Road Cottage” | Inside Out House & Wellbeing Garden | Destination Space in Richmond

- Connecting With Others from around Christchurch (use the space for events):
- Studio Home Gardening (<https://www.facebook.com/studiohomegardening/>)
 - Christchurch Rocks NZ (<https://www.facebook.com/groups/ChristchurchRocks/>)
 - The Butterfly Musketeers (<https://www.facebook.com/butterflymusketeers/>)
 - Christchurch Photographers Group (<https://www.facebook.com/groups/814054371965442/>)



Number 1: Back Wall

Use two planter boxes, with a wooden frame/trellis ‘chimney’ in between to form the back wall. Create ‘built in bookcases’ in each planter box. Create ‘photo frame’ signage with old photos/historic info to be placed on the bookcases. Use the bookcases as a free community book exchange, see “The Green Lab - Ideas” Pic 17.

Number 2: Side Wall

Using the planter boxes for each side of the “Cottage”, add weatherboards to outside, install a leadlight/character window? in the centre of each planter box, add trellis either side & plant with jasmine/ivy? to create a ‘living’ wall, that acts as a windbreaker/privacy, windows create framed view out to Swanns Road & River Road.

- Leadlight Windows (<https://www.musgroves.co.nz/windows/leadlights.html>)

Number 3: Front Wall

Using two planter boxes, with a wooden ‘door frame’ in between to form the front wall. Create a front entrance to the ‘Cottage’. See “Entranceway to the River Trail - Ideas, Arbor/Archway - Ideas” & “The Green Lab - Ideas”.

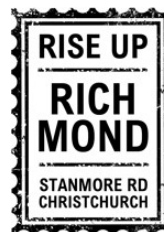
Number 4: Garden

See “The Green Lab - Ideas”. Butterfly Bushes & Swan Plants to attract monarch butterflies. Add more bird houses/feeders to the garden area. See “Richmond Wayfinding Signage - ‘Medium’ Ideas”. - Wildflower Seeds (<https://www.gardenpost.co.nz/wildflower-world/> & <https://www.gardenpost.co.nz/products/2599/>)

The ‘Walls’ don’t actually connect to form a ‘Cottage’, gaps in between the planter boxes to create pathways through and around the structure, like a ruin/abandoned house, overgrown with climbing plants and a wild flower/self seeding sensory garden.

Inside the ‘River Road Cottage’ place a large picnic table. See “Entranceway to the River Trail - Ideas, Picnic Table - Ideas”. ‘Placemat’ signage could be attached to the picnic table with a map of the Richmond area.

This destination space can be used by locals for picnics, community groups to hold meetings/activities/events, a place for those displaced by the earthquakes from their family homes to come back to the Richmond area and enjoy the Avon River view again.



Joanna Gould | 5 Cargill Place, Richmond, Christchurch 8013 | 021 132 6328
www.facebook.com/ShirleyCentre10ShirleyRoad/ | www.facebook.com/groups/www.10shirleyroad.org.nz
joanna@10shirleyroad.org.nz | www.facebook.com/groups/www.10shirleyroad.org.nz
joanna@riseuprichmond.nz | www.riseuprichmond.nz
www.facebook.com/RiseUpRichmond/ | www.facebook.com/groups/2070060349907745/
joanna@getcreativechristchurch.nz | www.getcreativechristchurch.nz
www.facebook.com/GetCreativeChristchurch/ | www.facebook.com/groups/299724980619778/

