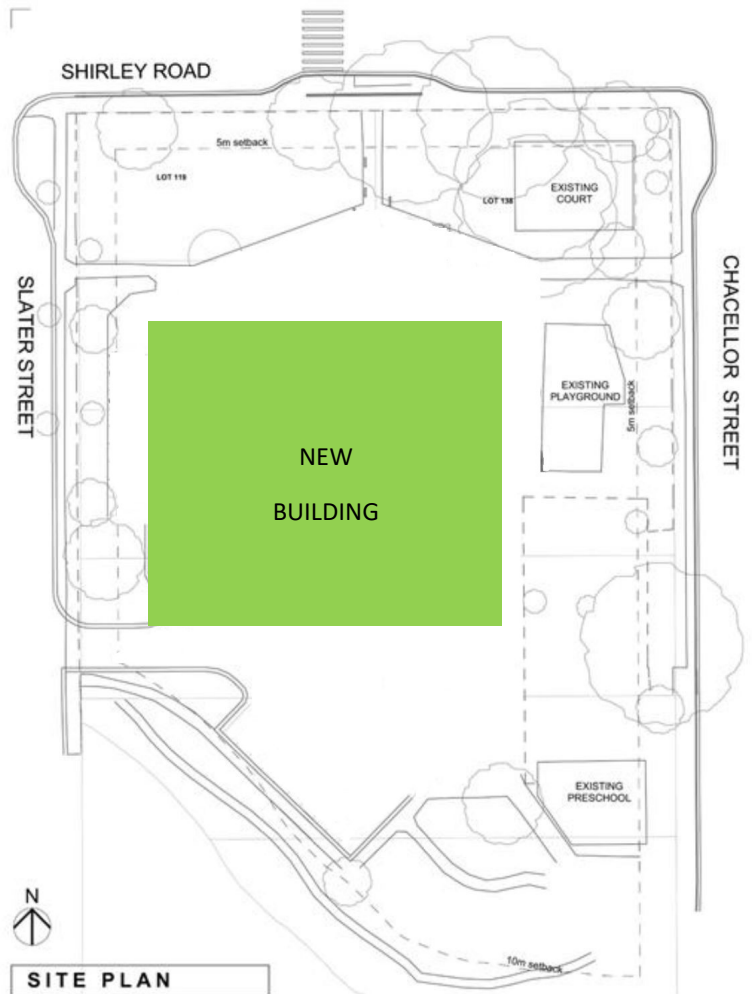


Shirley Community Centre | 10 Shirley Road | Library, Learning Centre, Playground, Playcentre



- a whole neighbourhood block dedicated to this community (new purpose built library/learning centre, beside newly landscaped Dudley stream with existing Shirley Playcentre and upgraded playground)
- established large trees with seating underneath, grass area for weekend outdoor market, seating under verandah of the new centre building, outdoor chess set, existing basketball court, fruit trees
- library: with service centre, free wifi/internet access, wifi enabled printer, public computers, tables so you can bring your own device (iPad/Laptop), comfortable chairs by magazines/fiction
- learning centre: open glass space with sliding doors to create smaller rooms when needed for community groups, after school activities, holiday programs, classes for: job seekers, family history, self publishing etc.
- website and community noticeboard on the outside of the centre, listing all local community facilities/places to hire/groups/activities/contact details
- disability/sensory friendly playground so all children are included and enjoy this playground
- existing bus stops on either side of Shirley Road, onsite parking behind the centre, off street parking upgraded on Slater Street and Chancellor Street



Who?

Who created the original Shirley Community Centre?

<http://www.heritage.org.nz/the-list/lost-heritage/canterbury-earthquakes/christchurch-city-q-to-z>

"Shirley Community Centre (former Shirley Primary School), 10 Shirley Road, Christchurch
Originally entered in the List as a Category 2 historic place (#7117) - Demolished 2012

This building was constructed in 1915 as Shirley Primary School. It was built to the design of Education Board architect George Penlington. The building's hipped roof and symmetry gave the building an overall Georgian air, whilst its U-shaped plan and large and regular fenestration hinted at the Jacobean influence which was to be developed in Penlington's later work."

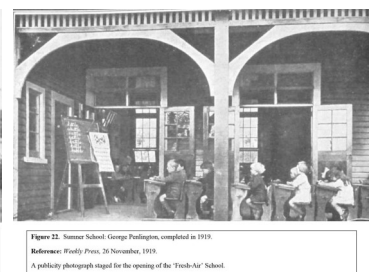
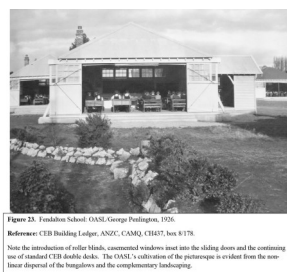
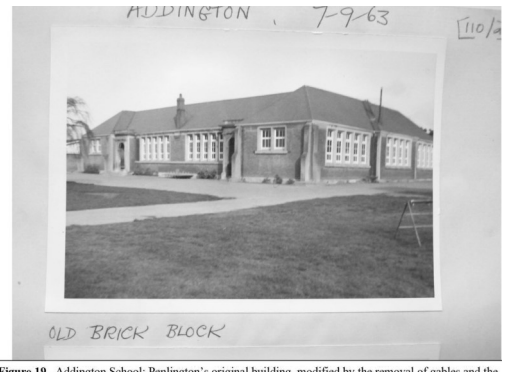
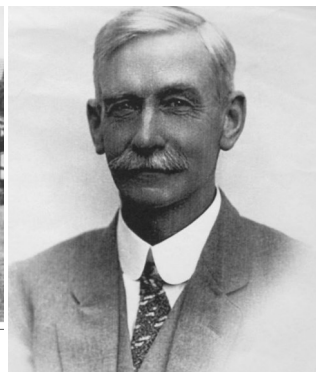
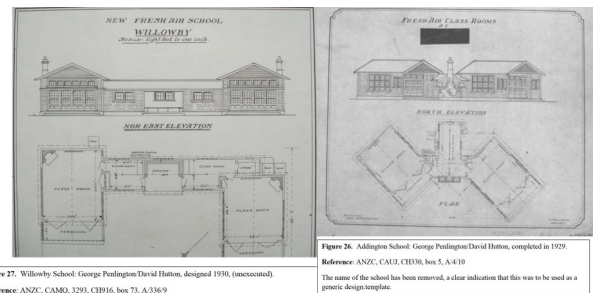
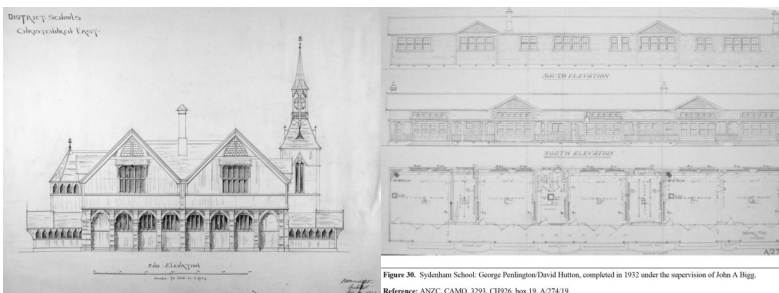
https://ir.canterbury.ac.nz/bitstream/handle/10092/9591/thesis_fulltext.pdf?sequence=2

<https://ir.canterbury.ac.nz/handle/10092/9591>

<https://ir.canterbury.ac.nz/bitstream/handle/10092/9591/WilliamsIllustrationsfinal.pdf>

BUILDING YESTERDAY'S SCHOOLS

An analysis of educational architectural design as practised by the Building Department of the Canterbury Education Board from 1916 - 1989, by Murray Noel Williams.



Where?

Where is the Shirley Community Centre?

<https://www.gets.govt.nz/CCC/ExternalTenderDetails.htm?id=17008821>

15/16-127 For the provision of a Combined Community Facility at No 10 Shirley Road Christchurch

Tender Details | Keith Murphy

Open Date: 19 November 2015, Close Date: 20 January 2016

Overview

The purpose of this RFP is to invite Respondents to submit their proposals for a new Combined Community Facility to be located at 10 Shirley Road (the "Site").

The historic Shirley Community Centre was previously located at 10 Shirley Road but suffered significant damage in the Canterbury earthquake series and was subsequently demolished.

The Council now requests proposals to establish a new, long term (>20 years) community focused facility on the Site.

The objective of this RFP process is to obtain sufficiently detailed information from Respondents as to their proposed design, funding and operation for a facility. This enables the Council staff and the Shirley/Papanui Community Board to select a proposal to allow further discussions with a Respondent.

http://christchurch.infocouncil.biz/Open/2016/07/SPCB_20160706_AGN_685_AT_WEB.htm

Shirley/Papanui Community Board | 06 July 2016

Shirley Community Facility - 10 Shirley Road | Kent Summerfield

"1. Purpose and Origin of Report

Purpose of Report

1.1 The purpose of this report is for the Shirley/Papanui Community Board to receive the information contained within and to instruct staff on how to proceed regarding the reinstatement of a Combined Community Facility at 10 Shirley Road.

Origin of Report

1.2 This report is being provided in accordance with earlier Shirley/Papanui Community Board and Council resolutions.

1.3 Specifically, on the 19th of August 2015 the Shirley/Papanui Community recommended that the staff recommendation as set out below be adopted. That recommendation was:

That the Shirley/Papanui Community Board recommend to the Council that it instruct Council Officers to prepare and release a Request for Proposal (RFP) to the open market inviting proposals for the development and operation of a Community Centre or similar at 10 Shirley Road.

1.4 Subsequently at the Council meeting of 10 September 2015, it was **resolved** on the motion of Councillor Cotter, seconded by Councillor Jones, that the Council instruct Council Officers to prepare and release a Request for Proposal (RFP) to the open market inviting proposals for the development and operation of a Community Centre or similar at 10 Shirley Road."

"4. Key Points

4.1 This report supports the [Council's Long Term Plan \(2015 - 2025\)](#):

4.1.1 Activity: Community Facilities

- Level of Service: 2.0.1 Provide community facilities

4.2 The following feasible options have been considered:

- Option 1 – **Reject Crossway Proposal**. Under this option the Board would instruct Council staff to reject (with many thanks for their offer and commitment) the Crossway Proposal received in response to the Request for Proposal document and proceed with the consultation, design and construction of a new facility using available Council funds.

Where? (cont'd)

- Option 2 – **Accept Crossway Proposal.** Under this option the Board would recommend to the Council that the Council instruct staff to accept the Crossway Proposal as presented. Council approval for this option is required due to the grant component of the Crossway Proposal.
- Option 3 – **Neither accept nor reject Crossway Proposal.** Under this option the Board would neither accept nor reject the Crossway Proposal as it stands, and would instead instruct staff to obtain additional detail/negotiate and report back to the Board at a later date.”

http://christchurch.infocouncil.biz/Open/2016/08/SPCB_20160831_AGN_689_AT.htm

Shirley/Papanui Community Board Area Update | Judith Pascoe | 31 August 2016

“Shirley Community Centre Rebuild Process

The Council has allocated funding of \$2.57 million to cover the capital costs of the rebuild of the Shirley Community Centre. This project is in Tranche 1 of the Community Facilities Rebuild Programme.”

http://christchurch.infocouncil.biz/Open/2016/12/PICB_20161209_AGN_1197_AT.htm

Papanui-Innes Community Board Minutes | 09 December 2016

Memo Re: Info on the Site Selection Process for the Shirley Community Centre Rebuild Project

Why?

<https://www.ccc.govt.nz/assets/Documents/Culture-Community/Stats-and-facts-on-Christchurch/CommunityProfile-ShirleyPapanui-Shirley.pdf>

Shirley Community Profile | November 2014

Key issues identified

Issue	Progress to date / outcomes
<ul style="list-style-type: none">The opportunity for local non-government organisations (NGOs) to develop and build on the links made across the sector during their individual post-earthquake response work.	<p>November 2012</p> <ul style="list-style-type: none">This has been sustained and developed with support provided by organisations to each other and a collegial approach to innovation and new programs while maintaining their unique service delivery. <p>November 2013</p> <ul style="list-style-type: none">The collegial approach has seen a greater depth of inter-agency referral, support, and joint venture opportunities. An example is the two agencies that set up a very successful vegetable cooperative which distributes over 170 bags a week.Inter-agency support for the youth worker, market days involving local organisations, a door knock campaign and the joint delivery of holiday programs have strengthened organisational ties. <p>November 2014</p> <ul style="list-style-type: none">Shirley Community Trust and Te Puna Oraka released the findings of their surveys of the area and presented the findings to the Shirley Community Board, November 19th 2014 meeting.
<ul style="list-style-type: none">The loss of the Shirley Community Centre has highlighted the lack of a sport/community venue in the south-east.	<p>November 2012</p> <ul style="list-style-type: none">The community based benefits that would be derived from such a facility would enhance not only the sport and recreation options for the east of the area but also develop the tax roots work of organisations committed to the area. Such a facility would provide a real base for the youth of the area.Two local community groups are currently investigating the possibility of a community facility. <p>November 2013</p> <ul style="list-style-type: none">Crossways Community Church has had initial approval from Christchurch City Council for its proposed development.Shirley Community Trust is investigating with Housing New Zealand and Christchurch City Council the possibility of a community facility next to MacFarlane Park.The Neighbourhood Trust has received Capital Endowment Funding to buy a shop in Nancy Avenue for its Pay It Forward outreach. A second shop is currently rented.

Christchurch City Council

Issue	Progress to date / outcomes
continued...	<ul style="list-style-type: none">This new facility provides a venue and opportunities for local residents, artists and displaced groups. Senior Net, previously housed at the Shirley Community Centre, is operating from that venue. <p>November 2014</p> <ul style="list-style-type: none">Crossways Community Church continues discussions with Ngai Tahu and Christchurch City Council for its proposed development.Shirley Community Trust continues to liaise with Housing New Zealand, Christchurch City Council and the Shirley Community Board in respect of their vision for a community facility next to MacFarlane Park.The Neighbourhood Trust rented premises in Nancy Avenue as an outlet for local artists. This Social Enterprise continues to provide income for local artists and in time will support some Trust programmes. Senior Net continues to operate in a separate space within the venue.The Neighbourhood Trust has purchased a second property in Nancy Avenue. Refitting work is being completed with a projected opening date of February 2015. This property will house a craft space, room hire for small business, and the provision of courses to the local community.
<ul style="list-style-type: none">With the mooted closing, merging and relocation of schools across the area, there is a perception that the heart of the community will be lost.	<p>November 2012</p> <ul style="list-style-type: none">The opportunity arising from this decision is the possibility of schools and community hubs sharing grounds and/or facilities. These hubs could offer government and non-government services to the community from one site.If schools are closed, community organisations could use part of them to offer comprehensive services that are needed locally. <p>November 2013</p> <ul style="list-style-type: none">Organisations have been using the Hammersley Park School site since it closed. Schools and community hubs could still share grounds and/or facilities, depending on the Ministry of Education's future plans for the site.

Christchurch City Council

Issue	Progress to date / outcomes
continued...	<p>November 2014</p> <ul style="list-style-type: none">A number of organisations previously using the Hammersley Park School site have found other permanent or temporary locations. <ul style="list-style-type: none">With the immediate closure of a number of churches after the earthquakes, there was a possibility that the area would lose their community involvement. <p>November 2012</p> <ul style="list-style-type: none">Most churches have stayed loyal to the area and have found alternative accommodation. At least one church has amalgamated with others from other denominations to strengthen its commitment to the area and to offer services. <p>November 2013</p> <ul style="list-style-type: none">Insurance issues and possible relocation or amalgamation of churches continue to change. Currently most churches continue to worship within the area. <p>November 2014</p> <ul style="list-style-type: none">The situation remains the same with most churches continuing to worship within the area albeit at non religious venues or in available Church sharing arrangements.St Stephens Church site has been levelled but as yet there has been no information whether the Church will remain in the area.As mentioned above Crossways Community Church continues discussions with Ngai Tahu and Christchurch City Council for its proposed development.

Christchurch City Council

Why have I created this submission?

"I regularly go to the Shirley Library and after my visit today I made some observations to my husband. He suggested I fill in the Facebook survey for the new Central Library, which I did.

But then I thought...I most probably won't get to use that library much, I wish we could upgrade the Shirley Library... Wouldn't it be a great community facility to have a library and learning centre like Upper Riccarton and South Libraries?

But where would we get the money to create this building?

Sell the existing Shirley Library to The Palms Shopping Centre, as they are planning to expand north of the centre, and have already bought houses on the other side of the library.

"A block of 27 council flats, the Shirley library and service centre, and a Resene paint store separate The Palms from some of AMP Capital's residential properties." <https://www.stuff.co.nz/business/75692826/christchurchs-the-palms-mall-buys-neighbouring-homes-in-expansion-bid>

But where could we build a new community facility/library/learning centre?

My son goes to Shirley Primary School, directly opposite 10 Shirley Road. Each day as I pass 10 Shirley Road, it is a constant visual reminder to me and the locals/road users of Shirley Road, that our community has been left behind, we haven't rebuilt from the earthquakes.

What message is this also sending to the children at this school whose classrooms outlook is a "dump", and what about all the children from other schools who walk/bus/drive past this area?

That it's ok to treat your community spaces like a dump? That this area doesn't have any pride and isn't worth much? That there isn't any community spirit? That it's not a place you want to live?

Now imagine:

- a whole neighbourhood block dedicated to this community (new purpose built library/learning centre, beside newly landscaped Dudley stream with existing Shirley Playcentre and upgraded playground)
- established large trees with seating underneath, grass area for weekend outdoor market, seating under verandah of the new centre building
- library: with service centre, free wifi/internet access, wifi enabled printer, public computers, tables so you can bring your own device (iPad/Laptop), comfortable chairs by magazines/fiction
- learning centre: open glass space with sliding doors to create smaller rooms when needed for community groups, after school activities, holiday programs, classes for: job seekers, family history, self publishing etc.
- website and community noticeboard on the outside of the centre, listing all local community facilities/places to hire/groups/activities/contact details
- disability/sensory friendly playground so all children are included and enjoy this playground
- existing bus stops on either side of Shirley Road, onsite parking behind the centre, off street parking upgraded on Slater Street and Chancellor Street

This is what I would like and how the community could afford to create this place.

It won't be the same as the previous Shirley Community Centre, but I believe it could be a place to bring the whole community together again, for all ages and stages of life." ("Richmond Avonside Dallington Shirley Locals" Facebook post | Joanna Gould |

How?

How can the Shirley Community Centre be used?

- Neighbourhood block catering for all ages and stages of life
- Community Hub, one stop place for community engagement, learning and entertainment
- Incorporating library, learning centre, community groups/facilities, playground and playcentre
- Onsite and off street parking, disabled parking and parents parking
- Bus stops on either side of Shirley Road
- Preschoolers: Babytimes/Storytimes in Learning Centre rooms, Children's Library area, playground, playcentre
- Primary/Intermediate School children: Young Reader's Library area, After School activities in Learning Centre rooms, School Holiday Program in Learning Centre rooms, QR Code Hunt (inside centre) and Treasure Hunt (outside within neighbourhood block) answer questions correctly and go in draw for gift voucher (encourages research skills, productive use of technology, engage with librarians for help)
- High School Students/Adults: Free Wifi/internet access, Wifi enabled printer, public computers, tables so you can bring your own device (iPad/Laptop), power points for charging phone/iPad/Laptop, comfortable chairs by magazines/fiction, outdoor seating
- Parents: Activities for children's age, After School Activities, School Holiday Programs, Changing table in both female and male disabled toilets, Free Wifi/internet access, Wifi enabled printer, public computers, tables so you can bring your own device (iPad/Laptop), power points for charging phone/iPad/Laptop, comfortable chairs by magazines/fiction, outdoor seating
- English to Speakers of Other Languages (ESOL): Basic English/Life Skills for NZ class in Learning Centre rooms, option to connect with others in the community who speak your language. At Shirley Primary there are over 20 different languages spoken by the children attending. These children are getting help through the school, but their parents/grandparents need help also.
- Job Seekers: cv writing skills, job application class in Learning Centre rooms, guest speakers from WINZ Shirley?, free Wifi/internet access, Wifi enabled printer, Public Computers with Microsoft Office
- Learning: open glass space with sliding doors to create smaller rooms when needed for community groups, after school activities, holiday programs, classes. Free Wifi/internet access, Wifi enabled printer, public computers, tables so you can bring your own device (iPad/Laptop), power points for charging phone/iPad/Laptop.
- Entertainment: Chess, Cards, Scrabble, CD/DVD library hire, comfortable chairs by magazines/fiction, playground, outdoor market
- Community Groups: Learning Centre rooms available to hire during day or evening, week days or weekends, free Wifi/internet access, Wifi enabled printer, Tea/Coffee facilities available with room hire

How can we afford to create the Shirley Community Centre?

"The Papanui-Innes Community Board is committed to bringing forward the budget for a community facility at 10 Shirley Road, through the current Long Term Plan process." (Stacey Holbrough | Community Adviser | Community Support, Governance and Partnerships Unit)

http://christchurch.infocouncil.biz/Open/2016/08/SPCB_20160831_AGN_689_AT.htm

Shirley/Papanui Community Board

Shirley/Papanui Community Board Area Update | Judith Pascoe | 31 August 2016

Shirley Community Centre Rebuild

Process

The Council has allocated funding of \$2.57 million to cover the capital costs of the rebuild of the Shirley Community Centre. This project is in Tranche 1 of the Community Facilities Rebuild Programme.

<https://www.stuff.co.nz/business/75692826/christchurchs-the-palms-mall-buys-neighbouring-homes-in-expansion-bid>

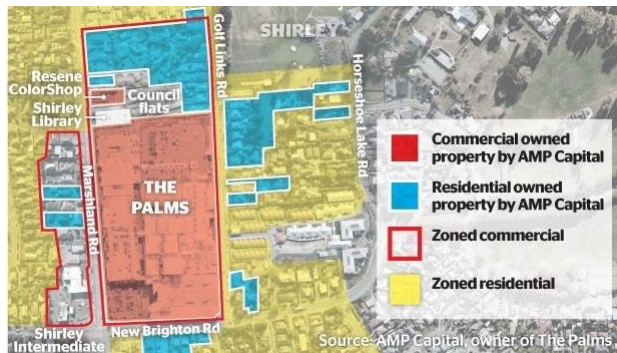
"On December 18 an independent panel hearing submissions on the city's district plan approved zone changes allowing The Palms to expand its retail and carparking to the immediate north of the centre, and on the western side of Marshland Rd."

"The council has also re-zoned other property around The Palms owned by AMP. That land can now be turned over into higher density, two to three-storey homes.

A council spokeswoman said that residential zone was a response to the Land Use Recovery Plan, which favoured people living more closely together around the city's largest retail centres.

How? (cont'd)

A block of 27 council flats, the Shirley library and service centre, and a Resene paint store separate The Palms from some of AMP Capital's residential properties." (Tim Fulton | The Press | 11 January 2016)



How can the community financial invest in this community centre?

http://christchurch.infocouncil.biz/Open/2016/12/PICB_20161209_AGN_1197_AT.htm

"The Council, through the LTP has allocated funding of \$2.57 million for the capital costs of a rebuild of the Shirley Community Centre." (Papanui-Innes Community Board Minutes | 09 December 2016)

<https://my.christchurchcitylibraries.com/new-brighton-pier/>

A group of residents who had formed the Pier and Foreshore Society to try to save the pier continued to campaign for a new pier. Thirty years of lobbying and fundraising in the community saw almost \$2 million raised from the community which was matched by a further \$2 million from the Christchurch City Council and a new pier design was approved with a new library, a café and a restaurant at the landward end."

"Buy A Brick" for individuals/families to have their name on a brick, edging the pathways around the centre.

"Sponsor A Seat" for businesses to have their name on a seat, added to the different outdoor spaces around the centre.

What?

What do we actually need/want in the Shirley Community Centre?

Email/Survey from Stacey Holbrough | Community Adviser | Community Support, Governance and Partnerships Unit
| April 2018

“Our research shows there are nine facilities that are available for hire or soon be built in the Shirley and Richmond area.

- St Stephens Church
- Shirley Intermediate school hall with stage
- Te Puna Oraka
- MacFarlane Park facility
- C3 Church
- Delta Community Support Trust
- Avebury House
- Shirley Rugby League Clubrooms
- Crossway Community Church

What would you like to see rebuilt at 10 Shirley Road?

Community Centre with a mixture of large and small meeting spaces

Large hall

Facility with a commercial kitchen

Storage facilities

Room with stage to hold performances in

Long term club lease opportunities

Fruit forest

Skate Park

All access playground

Outdoor recreational space

Other option(s)?:

What programmes would you utilise at 10 Shirley Road?

Exercise classes

Community learning

Arts and Crafts

Faith based activities

Club and Recreation programmes

Community Groups

Drop Inn Centre

Dance classes

Facility you can hire for celebrations

Facility you can cater / learn to cook in

Other programmes?:”

We already have numerous “big spaces” like school halls, church buildings.

Not everyone feels comfortable going to/using a church, based on their own faith/beliefs.

The current Shirley Library is out of date, no dynamic spaces or quiet spaces that can be used by different groups, no specific library parking so you can't park close by due to the busyness of the mall, closes early so it unavailable to 9-5pm workers, service centre is not well used so space could be smaller, young adult room is mainly used by teenagers after school, limited space for after school activities/holiday programs, internet computer users can be noisy.

What? (cont'd)

N.Z. HISTORIC PLACES TRUST BUILDINGS RECORD FORM

COMPUTER No: 7117
HP FILE No: 17007-253

NAME of Building/Structure: **SHIRLEY COMMUNITY CENTRE** (Former Shirley Primary School)

REGION: Canterbury
LOCAL BODY: Christchurch City Council
CITY/TOWN: Christchurch
STREET AND No: 10 Shirley Road, Shirley
DISTRICT SCHEME DETAILS

IF BUILDING IS PART OF AN HISTORIC AREA
ENTER NAME OF PRECINCT OR CONSERVATION AREA

ARCHITECTURAL INFORMATION:
Style: A variation on the Georgian style - its U-shaped plan and large & regular fenestration hint at a Jacobean influence.
Construction: Brick masonry

TAKEN BY: Ann McEwen (30 Sept 1992)
Negative held by: Neg. Ref. No.

BUILDING TYPE: FORMERLY SCHOOL NOW COMMUNITY

OWNER: Name _____ Address _____
OCCUPIER: Name _____ Address _____

RECOMMENDED CLASSIFICATION: PC
Research by Ann McEwen
APPROVED CLASSIFICATION: C Inspected by Ann McEwen (30/9/92)
Richard Palmer Board Minutes 17.15.05

HISTORICAL INFORMATION

HISTORY
The Shirley Primary School was created in 1915 to the design of George Penlington, the Education Board architect in Canterbury. The Education Board was based on 10 June 1915. Sympathetic additions were made to the school building in 1924 and were presumably to the design of Penlington also. The completed four east-facing classrooms. Other than these additions, the building appears largely unaltered.

Other works by Penlington include Hagley High School (1920) and the Peterborough Centre (former Teachers' College Building 1924-30). He was notable in the 1920s as a result of his work for the Education Board in Canterbury.

Shirley Primary School was typical of education buildings of this era in both plan and the provision of large windows to each classroom, but has some regional rarity in that it is constructed of brick.

The building is prominent within the local streetscape because of its corner site and spacious setting.

CRITERIA FOR CLASSIFICATION (Please tick box or encircle letter as applicable. If necessary add brief (i.e. one word) explanation.)

1. SOCIAL/HISTORICAL	1.1...Public primary school in suburban Christchurch...	1
1.2...Education Board...	1.2...Education Board...	1
1.3...Education Board...	1.3...Education Board...	1
1.4...Education Board...	1.4...Education Board...	1
2. TRADITIONAL/CULTURAL	2.1...Philosophy of public education, & lifestyle of	1
2.2...primary school children	2.2...primary school children	1
3. ARCHITECTURAL	3.1...Brick polychromy	1
3.2...Enhanced by spacious setting	3.2...Enhanced by spacious setting	1
3.3...Coherent and well resolved design	3.3...Coherent and well resolved design	1
4. TECHNICAL	4.1...Brick polychromy	1
4.2...Enhanced by spacious setting	4.2...Enhanced by spacious setting	1
4.3...Coherent and well resolved design	4.3...Coherent and well resolved design	1
5. AESTHETIC	5.1...Brick polychromy	1
5.2...Enhanced by spacious setting	5.2...Enhanced by spacious setting	1
5.3...Coherent and well resolved design	5.3...Coherent and well resolved design	1
6. ARCHITECTURAL	6.1...Brick polychromy	1
6.2...Enhanced by spacious setting	6.2...Enhanced by spacious setting	1
6.3...Coherent and well resolved design	6.3...Coherent and well resolved design	1
7. RARITY	7.1...Brick polychromy	1

REFERENCES (Write on separate sheets as necessary)
Primary Sources
Secondary Sources
NZHPT Nomination Form completed by Ann McEwen.
NZHPT files on Peterborough Centre and Hagley High School

Register Record

Register Number: 7117
Site Reference: P5791

Name: Shirley Community Centre

Other Names: Shirley Primary School
Former Shirley Primary School

Location: 10 Shirley Rd, Shirley, CHRISTCHURCH

Registered Legal Description:

Local Authority: Christchurch City

Summary: This historic place was registered under the Historic Places Act 1980. This report includes the text from the original Proposal for Classification report considered by the NZHPT Board at the time of registration.

This building was built as Shirley Primary School in 1915 to the design of Education Board architect George Penlington. With its hipped roof and symmetry, the overall flavour of this school building is Georgian. Its U-shaped plan, and large and regular fenestration, together hint at the Jacobean influence which was to be developed in Penlington's later work. In addition, it provides evidence of Penlington's skill in polychromatic brick construction.

Registration Status: Registration Removed

Registration Type: Historic Place Category 2

Register Number: 7117

What could the new building look like?

Old Building Design

<https://quakestudies.canterbury.ac.nz/store/object/13346>

The original building on this site "was constructed in 1915 as Shirley Primary School. It was built to the design of Education Board architect George Penlington. The building's hipped roof and symmetry gave the building an overall Georgian air, whilst its U-shaped plan and large and regular fenestration hinted at the Jacobean influence which was to be developed in Penlington's later work."

New Building Design

Honor the original building/architect/heritage and style of the character homes in this area, but frame/foundations built to modern earthquake standards.

Weatherboard style on the outside, long tables/study space by windows, windows to the ceiling (similar to Penlington re air flow), verandah with pillars, gable pitched roof (shape similar to the original building), grand central doorway, door into entry area (current events displayed on the inside, directory listing on the outside), door from entry area into library/learning, issues desk either side of front doorway, librarian desk and help desk either side of front doorway, children's library area overlooking playground/playcentre, bookshelves in the centre of the building, learning centre spaces at the back of the building, services area overlooking Slater Street (returns, staff, service centre, toilets), bookshelves in the center of the building with comfortable chairs by magazines/fiction, public computers spaced throughout the building.

What? (cont'd)

Playground Design

- existing playground equipment could be repainted to save money
- swings (infant, single, basket/disc/web), slide, see saw, carousel, trampoline
- disability access, all inclusive equipment, so everyone is included
- disability equipment can be used by everyone, including babies in strollers
- surfacing for safety, easy access for strollers/wheelchairs, low maintenance, less mess
- preschool/primary school children learn road safety skills while playing

<https://christchurchwalks.wordpress.com/playgrounds/rolleston-playground-and-skate-park/>

Rolleston Playground (94 Rolleston Drive, Rolleston) “with mini roading system”

<https://www.totstoteens.co.nz/entertainment/10-must-visit-playgrounds-canterbury/>

Torlesse Cycle Park (19 Johns Road, Rangiora) “kids’ road for them to ride on, there are even child-sized give way signs and pedestrian crossings.”

<https://christchurchwalks.wordpress.com/other-fun-stuff/westburn-reserve-bike-park-2/>

Westburn Reserve (Westburn Terrace, Burnside) “bike park with mini roading system”

<https://www.playgroundcentre.com/> (playground equipment)

<https://www.playgroundcentre.com/products/disc-rider/> (inclusive play)

<https://www.playgroundcentre.com/products/inclusive-carousel/> (inclusive play)

<https://www.playgroundcentre.com/products/trampoline-wheelchairs/> (inclusive play)

<https://www.playgroundcentre.com/products/chess-board-pieces/>

<http://www.parksupplies.co.nz/> (playground equipment and seating)

<http://www.parksupplies.co.nz/Activities/Disabled+Play.html> (Disabled Play)

<http://www.parksupplies.co.nz/Furniture.html>

<http://www.playco.co.nz/> (playground equipment)

<http://www.playco.co.nz/playground-components/swings>

<http://www.playco.co.nz/playground-components/swings/kryptonite-basket>

<http://www.playco.co.nz/playground-components/panels>

<http://www.playco.co.nz/playground-components/slides>

<http://www.playco.co.nz/playground-components/springys-and-seesaws>

<http://www.playbases.com/> (playground surfacing)

<http://www.playbases.com/categories/poured-in-place-tpv/products>

<http://www.playbases.com/categories/play-matta-original/products> (Accessible to disabled children)

Landscape Design

- existing established trees, introduce different native plants, name of tree/plant signs
- grass spaces for playing, kicking ball, picnics, outdoor market
- grey brick edging wide paths leading up to centre, “Buy A Brick” funding for individuals/families
- sensible seating under trees, by playground and stream, “Sponsor A Seat” funding for businesses
- mini roading system path around and through the playground area, to teach road safety and provide access to all areas of the playground for strollers/wheelchairs
- access paths to connect existing Shirley Playcentre with the playground/centre

What? (cont'd)

Sign Design

- Open hours and facilities available inside the centre
- Outdoor signage with directory of community groups using this facility
- Lockable outdoor noticeboard with current local event details/calendar, where locals can promote events in the area and at other local facilities
- History of the previous building

"This building was constructed in 1915 as Shirley Primary School. It was built to the design of Education Board architect George Penlington."

- History of Chch earthquakes

"Shirley Community Centre (former Shirley Primary School), 10 Shirley Road, Christchurch.

Category 2 historic place (#7117) - Demolished 2012"

- History of the new building

CCC & Community Board, Funding Process, Building Process, Opened

- Plant name signs, in different languages, QR code link to info on plant species etc.

Exhibit Design—"Your Space in this World"

- to create awareness, and inspire acceptance of all mental health issues and disabilities

When my son was 6 years old we had a lot of assessments/appointments at Whakatata House.

We came across the Dyslexia Discovery Exhibit, opposite the Arts Centre, at 21 Worcester Blvd.

My son was intrigued with this interactive space and spent a lot of time enjoying the discoveries he made.

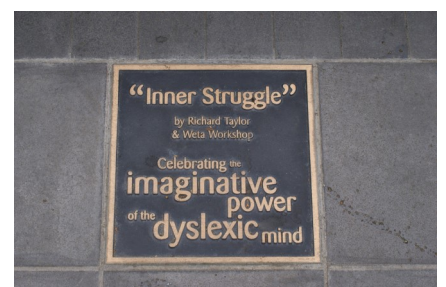
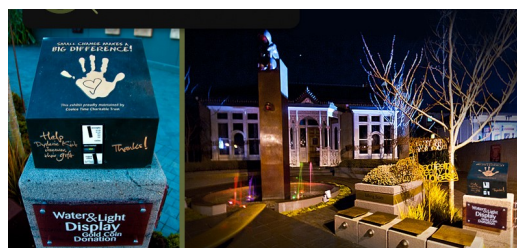
This space inspired me and reassured me that whatever disabilities my son would be diagnosed with (ADHD, Autism, Sensory Processing), he would find his "space in this world" that accepted his differences.

<http://www.ctct.org.nz/dde/> Dyslexia Discovery Exhibit

<http://tonyshaw3.blogspot.com/2013/04/dyslexia-discovery-exhibit-christchurch.html>

<http://www.stuff.co.nz/the-press/news/christchurch-earthquake-2011/7459146/Plans-to-save-dyslexia-building>

"Words fly out of an open book, twisting and threading around the small front garden of the single storey villa opposite the Arts Centre on Worcester Blvd. The bronze sculpture, Inner Struggle by Weta Workshop's Richard Taylor, is one of several artworks forming the Dyslexia Discovery Exhibit in the forecourt of the historic home of the Dyslexia Foundation and the Cookie Time Charitable Trust."



What? (cont'd)

Exhibit Design—"Your Space in this World" cont'd

We should have our own identity as a community that: celebrates, accepts and acknowledges our differences.

We should be known as more than just "The Palms", the previous community centre was our landmark.

So how do we show/represent that in our community centre?

Every map always has a marker to say "You Are Here", this is "Your Space in this World" right now.

This exhibit could be installed in front of the new building, in the middle of the three connecting paths.

\$ = Brick Planter Box, on each brick the word "Welcome" in different languages. Planted with a Cherry Blossom Tree to acknowledge the Christchurch earthquakes, and remind us of the changes the earthquakes brought to our community.

As it goes through Autumn we will be reminded of our losses, but in Spring, we will look to the future and all the positive changes that have happened in our community.

\$\$ = Water Fountain, activated by coin donation, square brick base, on each brick the word "Welcome" in different languages.

\$\$\$ = Water Fountain, with lights at night, activated by coin donation, square brick base, on each brick the word "Welcome" in different languages.

We should create a space that whether you are inside the community centre or outside, you feel included and welcomed, whether or not you are disabled, have mental health issues, or speak another language.

Acknowledge: the Christchurch earthquakes and the changes they brought to our community.

Celebrate: different nationalities/languages spoken in our community. At Shirley Primary School, there are over 20 different languages spoken by the children.

Accept: disabilities and mental health issues in our community. These are the organisations that I know of in our community:

Seabrook McKenzie Centre for Specific Learning Disabilities

68 London Street, Richmond

<https://www.seabrookmckenzie.net/>

Early Start Project

56 Shirley Road, Shirley

<https://www.earlystart.co.nz/>

Mental Health Education & Resource Centre

116 Marshland Rd, Shirley

<http://mherc.org.nz/>

Autism NZ – Christchurch Branch

250 Westminster Street, Mairahau

https://www.autismnz.org.nz/local_branches/canterbury/christchurch

Champion Centre

284/330 Burwood Rd, Burwood

<http://www.championcentre.org.nz/>