

Att: Mayor Phil Mauger, Deputy Mayor Pauline Cotter, Councillors & Council Staff

Re: Rebuild of the former Shirley Community Centre & Redevelopment of 10 Shirley Road/Shirley Community Reserve

1. Background Information
2. Community Support
3. Shirley Library
4. Shirley Centre Concept
5. Partnerships
6. Planning
7. Shirley Centre Images

### 1. Background Information:

The 10 Shirley Road site has historically been a 'place of learning'. The original Shirley Primary School was built, to the design of Education Board architect George Penlington. The foundation stone was laid on 16th June 1915. This building later became the Shirley Community Centre: a 'place for cultural, educational and recreational activities'. Before the earthquakes it was a Category 2 historic place, but due to earthquake damage it was demolished in 2012.

"Facilities Rebuild Tranche 1, 21. Shirley Community Centre. Replace. Section 38 (claim insured value)."  
<https://ccc.govt.nz/assets/Documents/The-Rebuild/Community-facilities/CommunityFacilitiesTranche1.pdf>

The land at 10 Shirley Road is classified as reserve, vested in the Council by the Crown to be held "in trust for local purpose (site for a community centre)".  
"That means the land could not be used for any other purpose than a community centre...It also appears the land could not simply sit 'vacant'."

9. Shirley Community Facility Rebuild – 10 Shirley Road (2015)  
4.3.4. Option 4 Do not build a Community Facility at 10 Shirley Road  
Does not restore the service available pre-earthquake on what was a popular, heavily used site.  
Unlikely to be acceptable to the Community.

5.2. Christchurch City Council owns the land at 10 Shirley Road.  
It is a total of 9,042m<sup>2</sup> and is reserve land held "in trust for local purpose (site for a community centre)".  
5.3. \$2,520,000 was allocated for construction of a new Shirley Community Facility as part of Tranche 1 of the Community Facilities Rebuild.

5.4. Crossways Church, a combination of three local congregations, have put forward a proposal to provide a replacement Community Facility at 10 Shirley Road.  
[https://christchurch.infocouncil.biz/Open/2015/08/SPCB\\_19082015\\_AGN.PDF](https://christchurch.infocouncil.biz/Open/2015/08/SPCB_19082015_AGN.PDF)

"Funding of \$2.57 million has been made available in the Christchurch City Council Long Term Plan in the 2016/17 financial year for the rebuild of the Shirley Community Centre."

8. Shirley/Papanui Community Board Area Update, 2.2 Shirley Community Centre Rebuild  
[https://christchurch.infocouncil.biz/Open/2016/08/SPCB\\_20160831\\_AGN\\_689\\_AT.htm](https://christchurch.infocouncil.biz/Open/2016/08/SPCB_20160831_AGN_689_AT.htm)

Item 12 Proposed Shirley Community Centre Rebuild (2016): <https://youtu.be/8lyNUERFLwo>  
"Request that the Community Board talk with staff around potential options for a regeneration plan in this area under the Greater Christchurch Regeneration Act 2016."  
[https://christchurch.infocouncil.biz/RedirectToDoc.aspx?URL=Open/2016/09/CNCL\\_20160908\\_MIN\\_480.PDF](https://christchurch.infocouncil.biz/RedirectToDoc.aspx?URL=Open/2016/09/CNCL_20160908_MIN_480.PDF)

7.4 Shirley Community Centre 10 Shirley Road (2019)  
"...use the site as an open air community hub or a "longer term gap filler approach" funding has been secured for a pump track and landscaping, with the potential for other outdoor activity features over time."  
10. Community Facilities Network Plan, Page 36  
[https://christchurch.infocouncil.biz/Open/2019/07/SOC\\_20190731\\_AGN\\_3438\\_AT.PDF](https://christchurch.infocouncil.biz/Open/2019/07/SOC_20190731_AGN_3438_AT.PDF)

"The Shirley Community Centre is located in a park like setting on the corner of Shirley Rd. In May 1977 the building and site became surplus to Ministry of Education requirements. In October 1977 Christchurch City Council was appointed to control and manage the site pursuant to the Lands and Domains Act 1953.

The site was set aside for use as a Community Centre and the running of the Centre was handed over to the Shirley Community Centre Society, which had been established earlier in the year to lobby for the building to be used as a Community facility. The centre opened for hire in March 1978.

Over the next almost 25 years funding from the City Council, fundraising and volunteer work from members of the Society and the local community have restored this building to a pleasant, well appointed Community Centre the local community can be proud of. It is well used by both local and citywide community groups, clubs and some commercial ventures, and is largely self-funding."

<http://archived.ccc.govt.nz/Council/CommunityPlans/Shirley-Papanui/2001/CommunityCentreIdealVenueForGroupsClubs.asp>

'Pop up' activities to 'activate' the site have had little success. Events like 'Skip Day' & the 'Car Boot Sale' organised by the 'Shirley Road Central' residents group, required many people to be involved in the planning & running of these events. More hours were invested in planning/meetings, than the actual duration of the event.

Prior to the earthquakes, the building was 'active' with day/night time activities/events & used by local community groups. Currently 10 Shirley Road/Shirley Community Reserve is used mostly by the parents/children of the Shirley Primary School, during drop off/pick up times. The majority of the time, this site is left 'vacant' & not 'activated' by local residents. Our youth population has decreased, after two of our local high schools were rebuilt in another Ward, only one remaining. Our primary aged children have access to their own new/redeveloped school playgrounds & other local parks. Parks near 10 Shirley Road: <https://smartview.ccc.govt.nz/map/layers/parks#/@172.65369,-43.50847,15>



Joanna Gould | [joanna@bowenvale.co.nz](mailto:joanna@bowenvale.co.nz)

W: [www.10shirleyroad.org.nz/](http://www.10shirleyroad.org.nz/) | FG: [www.facebook.com/groups/www.10shirleyroad.org.nz/](https://www.facebook.com/groups/www.10shirleyroad.org.nz/)

W: [www.riseuprichmond.nz/](http://www.riseuprichmond.nz/) | FG: [www.facebook.com/groups/2070060349907745/](https://www.facebook.com/groups/2070060349907745/)

W: [www.getcreativechristchurch.nz/](http://www.getcreativechristchurch.nz/) | FG: [www.facebook.com/groups/299724980619778](https://www.facebook.com/groups/299724980619778)



## 2. Community Support:

"Today at the Christchurch City Council Long Term Plan submissions hearing, Shirley Road Central Incorporated, presented their verbal submission advocating for a new civic centre to be built on 10 Shirley Road. The 'Where is Our Community Centre?' petition was presented to Council, with over 1,200 signatures. Letters of Support from Poto Williams, MP for Christchurch East & Duncan Webb Labour MP for Christchurch Central." Shirley Road Central, 12th May 2021, <https://www.youtube.com/watch?v=qhAT6iATaE8> <https://www.shirleyroadcentral.nz/the-future-for-shirley-road-central/>

"Your Ideas Wanted for 10 Shirley Road"

<https://www.10shirleyroad.org.nz/your-ideas-wanted-for-10-shirley-road/>, 58 submissions received

Q. How would you like to use 10 Shirley Road?

A. Community Centre/Hub/Library

<https://ccc.govt.nz/assets/Documents/Consultation/2021/06-June/Consultation-analysis-report.pdf>

<https://www.10shirleyroad.org.nz/ccc-10-shirley-road-consultation-feedback/>

<https://www.10shirleyroad.org.nz/ccc-10-shirley-road-engagement-feedback/>

"10 Shirley Road was the home for NZ Society of Genealogists - Canterbury Branch [Est. 1968], for 21 years from February 1990 until the February 2011 earthquakes. We were hoping that a new Community Centre would be built on the same site to serve the local community in many ways, and possibly return 'home'."

"Our city has special needs with what we have been through in the last decade, where the community have shown how strong they can be supporting each other, and desperately need safe and welcoming meeting places to suit all needs."

Pages 61-62, Letter from Fiona Lees, Convenor, NZ Society of Genealogists - Canterbury Branch

Pages 63-70, NZSG Canterbury Branch, 50th Anniversary - February 2018, includes photos of Shirley Community Centre

[https://christchurch.infocouncil.biz/Open/2020/11/PICB\\_20201120\\_AGN\\_4525\\_AT.PDF](https://christchurch.infocouncil.biz/Open/2020/11/PICB_20201120_AGN_4525_AT.PDF)

## 3. Shirley Library:

The original Shirley Library opened in July 1981, on a site now covered by The Palms.

By 1995 a new building was underway on a different site next to the developing Palms Mall. In January 29 1996, the new library opened in a purpose-built building shared with the Christchurch City Council Shirley Service Centre.

<https://heritage.christchurchcitylibraries.com/Archives/52/Library150/Articles/ShirleyLibrary/>

The current Shirley Library is located in the carpark of The Palms (Burwood Ward).

There are currently no local 'suburban' sized Christchurch City Libraries in the Innes Ward.

Shirley Library is considered a 'suburban' library, but there is a limited book selection, no board room, meeting rooms or learning centre (flexible spaces).

- 'Suburban' library: Catchment ranges from 1.5km to 3km radius; services population range from 15,000 – 40,000.

Services could include a variety of activities and flexible spaces.

UDS – Greater Christchurch Urban Development Strategy and Action Plan 2007.

- 'Neighbourhood' library: Catchment ranges from 1km to 1.5km radius; serves population from 10,000 to 12,000 people.

Services could include small, broad-spanning collections and a range of activities.

"...(2015) Council/ECan planning with mall owners in Shirley, with a view to possible relocation and upgrade of this library as a 'suburban' library." This implies that the current Shirley Library is actually a 'neighbourhood' library?

<https://christchurchcitylibraries.com/2025/Libraries2025FacilitiesPlan.pdf>

The actual floor space allocated to the Shirley Library, is less than half of the current building. As the Service Centre (which includes NZ Post) & the Coastal-Burwood Governance Team are also located in this building.

<https://www.10shirleyroad.org.nz/south-library-report/>

Shirley Library is still considered the second busiest suburban library in Christchurch, even without dedicated learning spaces & meeting rooms.

"It [South] is the third-busiest suburban library, behind Fendalton and Shirley, with 4552 weekly visitors."

<https://i.stuff.co.nz/the-press/news/128047707/earthquake-repairs-spell-18month-closure-of-popular-christchurch-library>

Shirley Library has become our community centre by default, since the Shirley Community Centre was demolished in 2012, as our residents are continuing to 'vote' with their feet.

Youth Audit Tool (Page 13) & ReVision Youth Friendly Spaces Audit Report: Shirley Library (Page 20)

[https://christchurch.infocouncil.biz/Open/2021/12/YTAC\\_20211201\\_AGN\\_5468\\_AT.PDF](https://christchurch.infocouncil.biz/Open/2021/12/YTAC_20211201_AGN_5468_AT.PDF)

"The Youth Audit Tool is an asset created by the youth sector of Christchurch, and offers a low-cost, robust methodology for capturing youth voice in the development of places and spaces around the city."

As a parent of a teenager (diagnosed with ADHD, Autism & Sensory Processing Order), I'm concerned that the 'Canterbury Youth Audit Check Card' (Page 18) doesn't include youth who are neurodivergent or have disability issues.

6. ReVision Youth Audit Shirley Library

<https://www.10shirleyroad.org.nz/wp-content/uploads/2022/04/CCCDraftAnnualPlan2022JoannaGould.pdf>, Page 6

## 4. Shirley Centre Concept:

Rebuild Shirley Community Centre as Shirley Centre (Library, Service Centre, Meeting Rooms, Learning Spaces), to continue supporting/connecting the residents around Shirley Road & in the surrounding communities: Shirley, Dallington, Richmond, Edgware, St Albans & Mairehau.

Redevelopment of '10 Shirley Road, Richmond' site into: Civic Centre/Citizen Hub with Accessible Playground & Reserve

<https://www.10shirleyroad.org.nz/shirley-centre-overview/>

<https://www.10shirleyroad.org.nz/shirley-centre-concept-image/>

<https://www.10shirleyroad.org.nz/learning-libraries-concept/>

<https://www.10shirleyroad.org.nz/community-education/>

<https://www.10shirleyroad.org.nz/instore-demonstration-concept/>

'Participate, Engage, Observe', 'You don't know what you need to know, until you need to know it.'

Shirley Centre: Identity | Well-being | Learning

"You Are Here": a place to be, within our communities.

Community Education & Support Services in Learning Libraries

<https://www.10shirleyroad.org.nz/centre-ideas/> (2018)

<https://www.10shirleyroad.org.nz/building-ideas/> (2021)

<https://www.10shirleyroad.org.nz/landscape-ideas/> (2021)

<https://www.10shirleyroad.org.nz/playground-ideas/> (2023)

Latest Research/Ideas/Posts:

<https://www.facebook.com/ShirleyCentre10ShirleyRoad> (updated daily with articles/ideas/research)



Joanna Gould | joanna@bowenvale.co.nz  
W: [www.10shirleyroad.org.nz/](http://www.10shirleyroad.org.nz/) | [www.facebook.com/ShirleyCentre10ShirleyRoad/](http://www.facebook.com/ShirleyCentre10ShirleyRoad/) | [www.facebook.com/groups/www.10shirleyroad.org.nz/](http://www.facebook.com/groups/www.10shirleyroad.org.nz/)  
W: [www.riseuprichmond.nz/](http://www.riseuprichmond.nz/) | [www.facebook.com/RiseUpRichmond/](http://www.facebook.com/RiseUpRichmond/) | [www.facebook.com/groups/2070060349907745/](http://www.facebook.com/groups/2070060349907745/)  
W: [www.getcreativechristchurch.nz/](http://www.getcreativechristchurch.nz/) | [www.facebook.com/GetCreativeChristchurch/](http://www.facebook.com/GetCreativeChristchurch/) | [www.facebook.com/groups/299724980619778](http://www.facebook.com/groups/299724980619778)



## 5. Partnerships:

"How much is your library worth to your community? We're delighted to share with you new research we've undertaken with FrankAdvice on the value of public libraries. The report explores both the role of libraries as community hubs, their value as a vehicle for public service delivery, and their contribution to community wellbeing. Public libraries are vibrant community hubs that enhance community wellbeing and social cohesion. They're also important places where local government and central government can deliver key local services – ones specific to their communities needs and wants.

The findings paint a clear picture that councils need more support to deliver the services that central government increasingly relies on public libraries to provide. The report also showcases great examples of services libraries across the motu provide to enhance community wellbeing.

We'll encourage councils to consider how they can enable and resource public libraries to evolve their services and better enhance community wellbeing. And we'll use this research to engage with the Government on ways it can better support public libraries to deliver value to communities."

<https://www.lgnz.co.nz/news-and-media/2023-media-releases/research-reveals-libraries-are-huge-contributors-to-community-wellbeing/>

Summary: <https://www.lgnz.co.nz/assets/PDFs/Value-of-public-libraries-executive-summary.pdf>

Research Paper: <https://www.lgnz.co.nz/assets/FLLG/Frank-Advice-Libraries-as-a-vehicle-for-service-delivery.pdf?vid=5>

<https://www.10shirleyroad.org.nz/review-into-the-future-for-local-government/>

<https://www.10shirleyroad.org.nz/review-into-the-future-for-local-government-update/>

"Local Government New Zealand is delighted to see the Local Government (Community Well-being) Amendment Bill pass its third and final reading in Parliament last night, effectively reinstating the four aspects of community well-being – social, economic, environmental and cultural – into the Local Government Act.

It is a significant show of support from the Coalition Government for the on-going work of councils to lift the well-being of their communities.

"The reinstatement of the four well-beings is formal recognition that councils have a significant role to play in lifting the quality of life of our people, and the health of our environment," says LGNZ President Dave Cull."

<https://www.lgnz.co.nz/news-and-media/2019-media-releases/reinstated-well-beings-endorse-councils-community-focus/>

Potential partnerships between local & central Government for the 'Rebuild of the former Shirley Community Centre & Redevelopment of 10 Shirley Road/Shirley Community Reserve':

**Christchurch City Council** | <https://www.ccc.govt.nz/>

Below are the CCC Plans, Strategies & Policies documents "that help us to plan and shape the future of our city."

- Greater Christchurch Urban Development Strategy Update (2016)
- Citizen Hub Strategy (2015)
- Multicultural Strategy (2017-2021)
- Strengthening Communities Strategy (2007)
- Community Wellbeing Research Review (2008)
- Social Wellbeing Policy (2000)
- Children's Policy (1998)
- Christchurch City Health & Wellbeing Profile (2012)

<https://www.10shirleyroad.org.nz/wp-content/uploads/2019/08/CCCDraftAnnualPlanMar2019JoannaGould.pdf>

"Ministry for the Environment (2005) Urban Design Protocol: The value of public buildings such as libraries is emphasised in the Urban Design Protocol (which Christchurch City Council is a signatory to): they protect the cultural identity and heritage of our towns and cities; provide creativity; and add social, environmental and cultural benefits by creating well connected, inclusive and accessible places."

<https://christchurchcitylibraries.com/2025/Libraries2025FacilitiesPlan.pdf>, Page 6

**Ministry of Education** | <https://www.education.govt.nz/>

The 10 Shirley Road site is central to our 14 local education providers, all are within 3km of the 10 Shirley Road site:

1. **Mairehau High School**, <https://www.mairehau.school.nz/>  
440 Hills Road, Mairehau (1.8km from 10 Shirley Road), <https://goo.gl/maps/VCPX8iEpuXMYcHbH6>
2. **Shirley Intermediate School**, <https://sis.school.nz/>  
60 Shirley Road, Shirley (700m from 10 Shirley Road), <https://goo.gl/maps/AgkGXmZ5JyihqXR26>
3. **Shirley Primary School**, <https://shirleyprimary.school.nz/>  
11 Shirley Road, Shirley (opposite 10 Shirley Road), <https://goo.gl/maps/zWC8oYRQ9qPRvK487>
4. **Pareawa Banks Avenue School**, <https://www.pareawabanksave.school.nz/>  
57 Averill Street, Richmond (1.1km from 10 Shirley Road), <https://goo.gl/maps/EJQwBkcbqYZCk3b19>
5. **Arahina ki Ōtautahi Kingslea School**, <https://www.kingslea.school.nz/locations/arahina-ki-otautahi-christchurch/>  
19 Pavitt Street, Richmond (2.2km from 10 Shirley Road), <https://goo.gl/maps/YhEaqTA8JmT2h51S8>
6. **St Albans Catholic School**, <https://www.stalbanscatholic.school.nz/>  
49 Rutland Street, St Albans (2.6km from 10 Shirley Road), <https://goo.gl/maps/cz8B4qbUDtceHCBG6>
7. **St Albans School**, <https://stalbans.school.nz/>  
17 Sheppard Place, St Albans (2.2km from 10 Shirley Road), <https://goo.gl/maps/KBqh1qtC7bR7MUrm9>
8. **St Francis of Assisi School**, <http://www.stfrancischch.school.nz/>  
370 Innes Road, St Albans (1.9km from 10 Shirley Road), <https://goo.gl/maps/ZEBY238LMbcCPpFR7>
9. **Mairehau Primary School**, <https://mps.school.nz/>  
43 Mahars Road, Mairehau (1.7km from 10 Shirley Road), <https://goo.gl/maps/zx1Hc2V5o4tBhpbWA>
10. **Kidsfirst Kindergartens MacFarlane Park**  
<https://www.kidsfirst.co.nz/christchurch/shirley/macfarlane-park-1.1454-C.1599-N.112668>  
19 Acheson Avenue, Shirley (1.2km from 10 Shirley Road), <https://goo.gl/maps/UdTVmAb9wfyqTq86>
11. **Kidsfirst Kindergartens Shirley**, <http://www.kidsfirst.co.nz/Shirley>  
3B Ajax Street, Burwood (1.3km from 10 Shirley Road), <https://goo.gl/maps/B2BwjRiqiqGvVtrc8>
12. **Kidsfirst Kindergartens Richmond**, <http://www.kidsfirst.co.nz/richmond>  
41 North Avon Road, Richmond (1.4km from 10 Shirley Road), <https://goo.gl/maps/saPdwmTfwgjXFh4A9>
13. **St Albans Playcentre**, <https://www.playcentre.org.nz/centre/st-albans/>  
96 Philpotts Road, Mairehau (2.7km from 10 Shirley Road), <https://goo.gl/maps/m3nXxZbgBLvDbdPz8>
14. **Shirley Playcentre**, <https://www.playcentre.org.nz/centre/shirley/>  
61 Chancellor Street, Shirley (located in the Shirley Community Reserve), <https://goo.gl/maps/ywtFhw7Hkw4FzMvL6>



Joanna Gould | [joanna@bowenvale.co.nz](mailto:joanna@bowenvale.co.nz)

W: [www.10shirleyroad.org.nz/](http://www.10shirleyroad.org.nz/) | FG: [www.facebook.com/groups/www.10shirleyroad.org.nz/](https://www.facebook.com/groups/www.10shirleyroad.org.nz/)

W: [www.riseuprichmond.nz/](http://www.riseuprichmond.nz/) | FG: [www.facebook.com/groups/2070060349907745/](https://www.facebook.com/groups/2070060349907745/)

W: [www.getcreativechristchurch.nz/](http://www.getcreativechristchurch.nz/) | FG: [www.facebook.com/groups/299724980619778](https://www.facebook.com/groups/299724980619778)



“Every New Zealander:

- is strong in their national and cultural identity
- aspires for themselves and their children to achieve more
- has the choice and opportunity to be the best they can be
- is an active participant and citizen in creating a strong civil society
- is productive, valued and competitive in the world.”

<https://www.education.govt.nz/our-work/our-role-and-our-people/our-purpose-and-vision/>

“Support and resources for the community: We deliver policies, programmes and services focused on improving the community's knowledge of and participation in the education system.

This involves working with parents, iwi, and Pasifika advisors and community groups to:

- get greater participation in education
- provide information to enable decisions to be made about education options
- provide education programmes for stakeholders to support the education system.”

<https://www.education.govt.nz/our-work/our-role-and-our-people/what-we-do/#community>

Our local children in the suburbs of Shirley, Dallington, Richmond, Edgeware, St Albans & Mairehau, surrounding 10 Shirley Road/Shirley Community Reserve, are growing up without access to a local ‘suburban’ sized library with a wide variety of books & learning spaces for after school/holiday programmes in their own communities.

We are told climate change is a real issue & to ‘Live Local Go Local’, yet we have no local ‘suburban’ sized Christchurch City Library in the Innes Ward?

I try to ‘Live Local & Go Local’, apart from my weekly visits to the library. My local Shirley Library is only 600m from my home, but I travel 5.4km to the Fendalton Library, as it is easier to get to: less stressful to find a car park, a wider range of books, learning spaces, different seating areas/options & a park setting that creates a relaxing welcoming environment.

Libraries are ‘third places (social)’ the ‘living room’ of society in our communities.

We have many in our communities who don’t have a ‘second place (work)’: stay at home parents, caregivers, retirees, unemployed, people working from home etc.

Some due to their circumstances don’t feel like they have a safe and relaxing ‘first place (home)’.

This is why it is so important that our ‘third places (social)’ are welcoming and inclusive for everyone in our communities.

“Public libraries are trusted sociocultural hubs for enabling lifelong learning and fostering community relationships. As public facing organizations that are open to the widest range of individuals, libraries seek to create safe and welcoming spaces for individuals of different socioeconomic statuses...public library branches offer tailored resources and programs to meet the specific needs of their communities who are navigating the effects of our increasingly asocial society.”

“Palaces For The People”: Mapping Public Libraries’ Capacity for Social Connection and Inclusion (Social Sciences and Humanities Research Council of Canada)

[https://macsphere.mcmaster.ca/bitstream/11375/28142/1/Dalmer\\_SSHRC\\_AsocialSociety\\_PalacesforthePeople.pdf](https://macsphere.mcmaster.ca/bitstream/11375/28142/1/Dalmer_SSHRC_AsocialSociety_PalacesforthePeople.pdf)

**Ministry of Health** | <https://www.health.govt.nz/>

“The Te Whare Tapa Whā model of thinking is a useful way of looking at your health. Developed by leading Māori health advocate Sir Mason Durie in 1984, it describes health and wellbeing as a wharenui or meeting house with four supporting walls. These walls represent: taha wairua/spiritual wellbeing, taha hinengaro/mental and emotional wellbeing, taha tinana/physical wellbeing and taha whānau/family and social wellbeing. Our connection with the whenua/land forms the foundation of the house. When all these things are in balance, we thrive. When one or more of these is out of balance our wellbeing is impacted. What can you do to strengthen those ‘walls’ of wellbeing for you and your whānau?”

<https://www.health.govt.nz/tewharetapawha>

“The Reading in Mind book scheme provides selected books and other resources on a wide range of mental health and wellbeing topics.”

<https://www.pegasus.health.nz/your-health/useful-links-resources/reading-in-mind/>

Community Education: ‘Well-being WOF/Tool Kit’ & ‘While You Wait’

<https://www.10shirleyroad.org.nz/community-education/>

**Ministry of Social Development** | <https://www.msd.govt.nz/>

Work and Income (WINZ) Shirley Service Centre

203-205 Hills Road (280m from 10 Shirley Road), <https://goo.gl/maps/ndyJXCstYFrp9kAH6>

**Whaikaha - Ministry of Disabled People** | <https://www.whaikaha.govt.nz/>

The 10 Shirley Road site is central to our local schools, but also central to our learning support services in Christchurch:

- Autism New Zealand Christchurch, <https://autismnz.org.nz/>

250 Westminster Street, Mairehau (1.4km from 10 Shirley Road), <https://goo.gl/maps/QfZgBQ6hEgqXYDtDA>

- SPELD New Zealand Christchurch, <https://www.speld.org.nz/>

12 Amos Street, Shirley (1.6km from 10 Shirley Road), <https://goo.gl/maps/afSbbmTWXBQsF3pU6>

- Seabrook McKenzie Centre, <https://www.seabrookmckenzie.net/>

68 London Street, Richmond (2km from 10 Shirley Road), <https://goo.gl/maps/pxC28ce6sgRTf9F8>

- Arahina ki Ōtautahi Kingslea School, <https://www.kingslea.school.nz/locations/arahina-ki-otautahi-christchurch/>

19 Pavitt Street, Richmond (2.2km from 10 Shirley Road), <https://goo.gl/maps/YhEaqTA8JmT2h51S8>

“We work with children and young people (age 10 – 16 years) in the care of Oranga Tamariki to increase engagement and participation in education.”

**Canterbury Genealogy** | <https://canterburygenealogy.org.nz/>

“10 Shirley Road was the home for NZ Society of Genealogists – Canterbury Branch, for 21 years from February 1990 until the February 2011 earthquakes. We were hoping that a new Community Centre would be built on the same site to serve the local community in many ways, and possibly return ‘home’.” <https://www.10shirleyroad.org.nz/original-building/>  
Currently Canterbury Genealogy is located at Parkview Community Lounge, 75 Queenspark Drive, Parklands.  
<https://goo.gl/maps/TPANY7kBKehFYRJ6>, <https://canterburygenealogy.org.nz/location/>

**Shirley Playcentre** | <https://www.playcentre.org.nz/centre/shirley/>

61 Chancellor Street, <https://goo.gl/maps/oqMKT7MQJawX1YAN7>

Located at the back of the Shirley Community Reserve, <https://www.10shirleyroad.org.nz/site-history/>

“We still believe that it takes a village to raise a child...We fervently believe that a parent is the best first teacher a child can have, so we will help equip you to teach your child...We work together with you to find ways to support your child’s learning and find their place in our centre.”



Joanna Gould | joanna@bowenvale.co.nz

W: [www.10shirleyroad.org.nz/](http://www.10shirleyroad.org.nz/) | FG: [www.facebook.com/groups/www.10shirleyroad.org.nz/](https://www.facebook.com/groups/www.10shirleyroad.org.nz/)

W: [www.riseuprichmond.nz/](http://www.riseuprichmond.nz/) | FG: [www.facebook.com/groups/2070060349907745/](https://www.facebook.com/groups/2070060349907745/)

W: [www.getcreativechristchurch.nz/](http://www.getcreativechristchurch.nz/) | FG: [www.facebook.com/groups/299724980619778](https://www.facebook.com/groups/299724980619778)



## 6. Planning:

- The Shirley Community Centre (10 Shirley Road) was damaged in the 2010/2011 Canterbury earthquakes, demolished in 2012. [The former building site area is currently grass, ready to be built upon.]
- The land at 10 Shirley Rd is classified as reserve land held "in trust for local purpose (site for a community centre)", vested in the Council by the Crown to be held in trust for local purpose/community centre. It is a total of 9,042m<sup>2</sup>.
- \$2,520,000 was allocated for construction of a new Shirley Community Facility as part of Tranche 1 of the Community Facilities Rebuild.
- "Note the importance of the geotechnical investigation for the proposed site at 10 Shirley Road and requests that the Council undertake an urgent geotechnical investigation." [Geotechnical Report already completed?]
- Shirley Community Facility/Crossways Proposal Community Meeting (30 April 2015) Feedback, Attachment to Clause 9 9. Shirley Community Facility Rebuild - 10 Shirley Road, Crossway Community Church Proposal (2015)  
[https://christchurch.infocouncil.biz/Open/2015/08/SPCB\\_19082015\\_AGN.PDF](https://christchurch.infocouncil.biz/Open/2015/08/SPCB_19082015_AGN.PDF)

Originally Shirley Road (now Aylesford Street) started at Westminster Street, before crossing over Hills Road to Marshland Road: <https://christchurchcitylibraries.com/Heritage/Maps/174743.asp>

Over 100 years ago in 1915, the original building was built at 10 Shirley Road, as the Shirley Primary School. This school was built at the centre of the then Shirley Road, connecting these communities even in the past. With the building of a new centre at 10 Shirley Road, these communities will once again have a central place to call 'home', with opportunities to be connected now & in the future, with residents from the surrounding suburbs: Shirley, Dallington, Richmond, Edgeware, St Albans & Mairehau.

- Page 34, "5.14 Occupancy rates across the Council managed facilities average between 36% and 38% with a customer satisfaction currently of 76%."
- Page 45, "No provider is particularly strong in providing for drop-ins, bumping and social services - Council Libraries are strongest in this area."
- Page 46, "4a. Focusing investment in small number of community hubs (existing and new) of significant size co-located with other Council facilities such as libraries."
- Page 48, "Worldwide trends tell us Community Facilities will be focal points in the community and will become known as neighbourhood and communal gathering places of flexible spaces that allow people to work/play/be/meet together in groups or work/play/be alone but connected to others outside of their homes."
- Page 57, "Facility Location Significance: Some facilities are better suited to be hub locations based on their centrality within a neighbourhood/rural community, geographical location, accessibility and proximity to other hub or key locations such as libraries, social and community outdoor spaces, cafes, economic and commercial centres including malls and or proximity to aligned activity, school/education, church, sport and play related."
- Page 57, "Ward and Neighbourhood Significance: At the network level where there are potential hub facilities, the approach is to support their development as Council owned and operated sites. Hub facilities are where there is co-location and clustering of services: library; service centre; community activity; recreation and sport; civic activity; culture; meeting and public assembly; education and arts activity."  
<https://www.10shirleyroad.org.nz/wp-content/uploads/2020/04/CCCDraftAnnualPlan2020JoannaGould.pdf>, Page 9

"He muka harakeke, he whītau tangata.

The harakeke is woven with the human strand – binding people and places together."

My original idea for a new building at 10 Shirley Road, Richmond, Christchurch, started through architecture...

A visual representation of Te Tiriti o Waitangi, the Treaty of Waitangi:

<https://www.waitangitribunal.govt.nz/treaty-of-waitangi/meaning-of-the-treaty/>

through the original building designed by George Penlington, Architect to the Canterbury Education Board with the Māori holistic model of health, Te Whare Tapa Whā (in the centre), which reminds you to take care of all the different aspects of your life to support your wellbeing, developed by Sir Mason Durie.

- Sir Mason Durie, <https://g.co/kg/Y3he7U>
- Te Whare Tapa Whā, <https://www.healthnavigator.org.nz/healthy-living/t/te-whare-tapa-wh%C4%81-and-wellbeing/>
- George Penlington, <https://www.10shirleyroad.org.nz/george-penlington/>

The building of the new Shirley Centre at 10 Shirley Road (opposite Shirley Primary School) represents laying a new foundation stone as the 'Gateway to the East', that says 'we value our children and everyone in the community, by creating a new identity to be proud of, providing access to well-being resources and life long learning for all'.

"Tangata ako ana i te kāenga, te tūranga ki te marae, tau ana.

A person nurtured in the community contributes strongly to society."

A multidisciplinary collaborative holistic approach is needed to create an Urban Design Plan for the 'Rebuild of the former Shirley Community Centre & Redevelopment of 10 Shirley Road/Shirley Community Reserve':

### Christchurch City Council Elected Members

- Pauline Cotter, Deputy Mayor/Councillor for Innes Ward (prior to the recent Ward boundary changes, 10 Shirley Road was in the Innes Ward)
- Aaron Keown, Councillor for Harewood Ward (Christchurch City Council Accessibility Portfolio, Co-owner/Designer for Jurassic Adventure: only entirely wheelchair accessible mini golf course in NZ, former Shirley Community Board member)

### Christchurch City Council Staff

- Paul McKeefry, Community Facilities Specialist
  - Kelly Hansen, Parks Planning & Asset Management Manager
  - Visitor Experience Team: Interpretation sign same style as the original Community Noticeboard sign.
  - History of 10 Shirley Road/Shirley Community Reserve in Christchurch City Council archives?
  - Heritage Items in storage to be incorporated into the new building design?
- "General Manager Community Services Michael Aitken says while the building is significant to the local community, it is unfortunately too badly damaged to retain...a number of significant heritage items will be retrieved from the building's fabric during the demolition." <https://www.infonews.co.nz/news.cfm?id=94709>

### Christchurch City Libraries Staff

- Erica Rankin, Community Libraries Manager Christchurch City Libraries
- Maia Abraham, Māori and Cultural Services Manager Christchurch City Libraries
- Leadership Team, <https://christchurchcitylibraries.com/About/NetworkServices/LibraryLeadership/>
- Places and Spaces Team, <https://christchurchcitylibraries.com/About/NetworkServices/PlacesSpaces/>
- Tukutuku Organising Team, <https://my.christchurchcitylibraries.com/puawaitanga-o-te-ringa/the-organising-team/>



Joanna Gould | [joanna@bowenvale.co.nz](mailto:joanna@bowenvale.co.nz)

W: [www.10shirleyroad.org.nz/](http://www.10shirleyroad.org.nz/) | FG: [www.facebook.com/groups/www.10shirleyroad.org.nz/](https://www.facebook.com/groups/www.10shirleyroad.org.nz/)

W: [www.riseuprichmond.nz/](http://www.riseuprichmond.nz/) | FG: [www.facebook.com/groups/2070060349907745/](https://www.facebook.com/groups/2070060349907745/)

W: [www.getcreativechristchurch.nz/](http://www.getcreativechristchurch.nz/) | FG: [www.facebook.com/groups/299724980619778](https://www.facebook.com/groups/299724980619778)

W: [www.getcreativechristchurch.nz/](http://www.getcreativechristchurch.nz/) | FG: [www.facebook.com/groups/299724980619778](https://www.facebook.com/groups/299724980619778)



## Waipapa Papanui Innes Central Community Board

- Emma Pavey, Community Governance Manager  
- Simon Britten, Deputy Chair (Project Management of Te Ora Hou Ōtautahi site development: <https://www.toho.org.nz/>  
& Local Government New Zealand Community Boards Executive Committee member: <https://www.lgnz.co.nz/about/governance/community-board-executive-committee/>)

## Heritage New Zealand Pouhere Taonga | <https://www.heritage.org.nz/>

- Register Records: <https://quakestudies.canterbury.ac.nz/store/object/13346>  
- Photos: [https://canterburyearthquakedemolist.weebly.com/uploads/2/0/3/6/20360823/shirley\\_community\\_centre.pdf](https://canterburyearthquakedemolist.weebly.com/uploads/2/0/3/6/20360823/shirley_community_centre.pdf)  
- "We need to think about what technologies are available for us to record these histories and to keep retelling them into the future. We also need to think about how to anchor those stories to the place...to ensure the stories remain connected to the place, and then the people remain connected to the place." Dr Christine Whybrew, Heritage New Zealand  
<https://www.riseuprichmond.nz/red-zone-futures-heritage-dr-christine-whybrew-from-heritage-new-zealand/>  
- Is there any information (photos/maps/stories) available regarding the history of the 10 Shirley Road site?  
Māori Heritage, Archaeology, Early Settlers, Original Shirley Primary School, George Penlington, Significant Trees etc.

## Be. Lab | <https://www.belab.co.nz/>

"Here at Be. Lab we know that Accessibility is about good design, and good design benefits everyone. By actively designing access in, you're creating a welcoming, inclusive atmosphere, encouraging participation from all citizens, and building a world where everyone can thrive. There are many different processes for designing places and services to be accessible, such as universal design, accessible design, inclusive design and human-centred design."  
<https://www.belab.co.nz/items/universal-design-and-accessible-design>  
"Auckland Council is looking for people from the disabled and access community to engage in a deliberative democracy process, to ensure this community building meets diverse needs...the library and community hub is due to open in 2024, with the preliminary design phase completed in collaboration with disability and access advocates."  
<https://www.belab.co.nz/items/co-design-avondale-hub>

## South Architects | <https://www.southarchitects.co.nz/>

"South Architects' initiative ArchiChat is resonating strongly with people who share their passion for design and the architectural process." <https://www.southarchitects.co.nz/architectural-forum-attracts-positive-response/>  
<https://www.southarchitects.co.nz/portfolio/peterborough-street-co-housing/>  
<https://www.southarchitects.co.nz/portfolio/halswell-quarry-preschool/>  
<https://www.southarchitects.co.nz/portfolio/concrete-copper-home/>  
Interior Layout Design Inspiration: 195 Peterborough Street building (although not designed by South Architects)

## The Drawing Board | <https://maori-tv.customer.web.one.accedo.tv/playback/item/6322930696112>, Episode 5

Derek Kawiti, Professor of Architecture, Te Herenga Waka, <https://people.wgtn.ac.nz/derek.kawiti>  
Fayne Robinson, Master Carver, [https://en.wikipedia.org/wiki/Fayne\\_Robinson](https://en.wikipedia.org/wiki/Fayne_Robinson)  
Lonnie Hutchinson, Artist, [https://en.wikipedia.org/wiki/Lonnie\\_Hutchinson](https://en.wikipedia.org/wiki/Lonnie_Hutchinson)  
Puamiria Parata-Goodall, Te Pae Narrative Advisor, Director Te Pakura Ltd  
Whare Timu, Principal, Warren & Mahoney, <https://warrenandmahoney.com/people/whare-timu>  
Joseph Hullen, Matapopore Trust  
Peter Matthews, Project Manager, Ōtākaro Limited

## Matapopore Trust | <https://matapopore.co.nz/>

Matapopore Project Sheets: <https://matapopore.co.nz/project-sheets/>  
Matapopore Urban Design Guide: [https://matapopore.co.nz/wp-content/uploads/2019/10/Matapopore-UDG-Finalv3-18Dec2015\\_Email-Version.pdf](https://matapopore.co.nz/wp-content/uploads/2019/10/Matapopore-UDG-Finalv3-18Dec2015_Email-Version.pdf)

## Ariki Creative | <https://www.arikicreative.com/>

## Art Fetiche | <https://www.artfetiche.co.nz/>

## Lucas Associates | <https://www.lucas-associates.co.nz/>

- Shirley MacFarlane Park Community Concept Plan  
<http://www.lucas-associates.co.nz/community-plans/shirley-concept-plan-2/>  
- Colours for Structures in the Aotearoa New Zealand Landscape  
<http://www.lucas-associates.co.nz/assets/Guidelines/Guidelines/Colours-for-Structures-in-the-NZ-Landscape.pdf>  
- Learning From the Past in Developing Our Urban Landscapes  
<http://www.lucas-associates.co.nz/christchurch-banks-peninsula/learning-from-the-past/>  
- Streamside Planting Guide  
<http://www.lucas-associates.co.nz/christchurch-banks-peninsula/streamside-planting-guide/>  
- Christchurch Ecosystems Interactive Map  
<http://www.lucas-associates.co.nz/christchurch-banks-peninsula/christchurch-ecosystems/>

## CREO | <https://creospace.co.nz/>

"Creo was engaged to re-design the playground and surrounding space to be inclusive, sensory, and cater for a range of ages and abilities." <https://creospace.co.nz/portfolio/lorna-irene-playground/>

Current Playground Photos: <https://goo.gl/maps/n3LzHF9sPJ8w4iSF6>, <https://goo.gl/maps/Gh9LbXs2UwNPejKu5>  
See Page 15, '7. Shirley Centre Images' for Playground Ideas

Recently I made a submission on the CCC 'Have Your Say' Avebury Park playground renewal. Currently access to the Avebury Park playground, is 'hidden' down a dead end on Eveleyn Couzins Avenue, bordering the 'Red Zone' area, with fewer surrounding houses/families. <https://goo.gl/maps/zCMyP34NXB7D1ZZh6>

Now the Waipapa Papanui Innes Central Community Board are considering the 'Revitalisation of Petrie Park' as a priority in their '2023–2025 draft Community Board Plan'? This park is even more 'hidden' than Avebury Park playground & has poor visibility from the street at both entrances.

- 125 Stapletons Road (alleyway view), <https://goo.gl/maps/pm6NvqeYxbspiSQq5>

- 121 Petrie Street (playground view), <https://goo.gl/maps/TseGPSz6zinHQhuu7>

Why prioritise Petrie Park over another more 'visible' well used Richmond playground, such as the Shirley Community Reserve Playground? <https://goo.gl/maps/qPclpZsi7mrZ1ABt6>

Residents advocating for the redevelopment of the Shirley Community Reserve, have been told due to the Council's financial constraints, there is no funding available. Ratepayer's money could be better spent to benefit more residents in the surrounding suburbs, with easy access to this 10 Shirley Road location.



Joanna Gould | [joanna@bowenvale.co.nz](mailto:joanna@bowenvale.co.nz)

W: [www.10shirleyroad.org.nz/](http://www.10shirleyroad.org.nz/) | FG: [www.facebook.com/groups/www.10shirleyroad.org.nz/](https://www.facebook.com/groups/www.10shirleyroad.org.nz/)

W: [www.riseuprichmond.nz/](http://www.riseuprichmond.nz/) | FG: [www.facebook.com/groups/2070060349907745/](https://www.facebook.com/groups/2070060349907745/)

W: [www.getcreativechurch.nz/](http://www.getcreativechurch.nz/) | FG: [www.facebook.com/groups/299724980619778](https://www.facebook.com/groups/299724980619778)



**Shirley Centre Concept (2021)** | <https://www.10shirleyroad.org.nz/shirley-centre-concept/>  
**Shirley Centre Concept (Image)** | <https://www.10shirleyroad.org.nz/shirley-centre-concept-image/>  
**Shirley Centre Concept (Research)** | <https://www.10shirleyroad.org.nz/research/>  
**Shirley Centre Concept (Submissions)** | <https://www.10shirleyroad.org.nz/submissions/>

**Site History** | <https://www.10shirleyroad.org.nz/site-history/>  
Shirley Road History, Significant Park Trees, Dudley Creek, Chancellor Street Heritage Houses, Dudley Character Area

**Dudley Creek Esplanade Reserve** | <https://goo.gl/maps/Ji5haPVwJxqBF1167>  
159 Slater Street, Richmond, path from Slater Street to Shirley Shopping Centre (corner of Hills & Shirley Road).

**Dudley Creek Trail** | <https://riseuprichmond.nz/dudley-creek/>  
Bring residents out into their local community to appreciate the existing tree canopy while walking along Dudley Creek & finding information about local birds/sites/Dudley Creek Flood Remediation.  
<https://www.ccc.govt.nz/assets/Documents/Services/Stormwater-drainage/Works-notices/dudleycreekconsultationbooklet.pdf>

**StoryWalk®** | <https://letsmovelibraries.org/storywalk/>  
Promoting literacy, reading, health, exercise, and movement in communities and neighbourhoods. Connecting books about trees/birds/climate change to local park trails.

**Original Building** | <https://www.10shirleyroad.org.nz/original-building/>  
Shirley Primary School, George Penlington (CEB Architect for Shirley Primary & Richmond Schools), Shirley Community Centre, NZ Society of Genealogists - Canterbury Branch

**George Penlington** | <https://www.10shirleyroad.org.nz/george-penlington/>

**Benjamin Oakes Moore** | <https://www.10shirleyroad.org.nz/benjamin-oakes-moore/>

**Community Facilities** | <https://www.10shirleyroad.org.nz/community-facilities/>  
CCC Community Facilities Network Plan, Christchurch City Libraries, St Martins Community Centre, Redcliffs Village Library, Sumner Centre

**South Library and Service Centre Rebuild** | <https://www.10shirleyroad.org.nz/south-library-report/>  
"South Library and Service Centre building – user survey. Your feedback will help shape design, feel and functionality, as we explore plans for rebuilding South Library | Te Kete Wānanga o wai Mōkihi and Service Centre."  
<https://www.ccc.govt.nz/the-council/haveyoursay/show/526>

South Library and Service Centre 'User Survey' Feedback  
Exterior, Interior & Visitor Experience: <https://www.10shirleyroad.org.nz/south-library-submission/>  
<https://www.10shirleyroad.org.nz/wp-content/uploads/2022/07/CCCHaveYourSaySouthLibrary2022JoannaGould.pdf>

**Christchurch City Council Integrated Planning** | <https://www.10shirleyroad.org.nz/ccc-integrated-planning-guide/>

"User perceptions of library buildings: Architectural and design element preferences in the public library"  
By Debbie Fox, Christchurch City Libraries  
<https://lianza.org.nz/wp-content/uploads/2020/07/NZLIMJ-Vol-54-Issue-4-Fox.pdf>, Vol 54, Issue No. 4, July 2014

**Design Considerations** | <https://www.10shirleyroad.org.nz/design-considerations/>  
Universal, Cultural, Māori Culture: Te Pae Māhutonga, Māori Culture: Te Whare Tapa Whā, Māori Culture: Whakairo (Carving), Autism Spectrum Disorder (ASD) & Sensory Processing, Biophilic, Environmental & Sustainable

Environmental Accessibility for Autistic Individuals by Megan Malcolm, University of Canterbury  
<https://anzswjournal.nz/anzsw/article/view/948>

Five years ago I started advocating for a new centre to be built at 10 Shirley Road (site of the former Shirley Community Centre), before then I had been advocating for my family:  
'Participate, Engage, Observe', <https://www.10shirleyroad.org.nz/instore-demonstration-concept/>  
My lived experience is my 'why' I keep advocating for a new centre at 10 Shirley Road.  
When my son was younger, I would regularly 'audit' places to see what triggered him to become overwhelmed.  
From my observations & through my research, I realised how environments, spatial layout & interior design affected him. It was easier to only take him to 'safe' places.  
As he grew & had more understanding of his triggers, new places became learning experiences. Opportunities to teach him how to cope in different environments & what 'tools' he could use to help him be less triggered.

"There comes a moment when you realize that what you're advocating for is more than just accommodations. You're really advocating for someone's quality of life. That's the moment you realize you won't give up."  
Residents need better access to local civic inclusive accessible 'safe' spaces, information & resources in their local communities for: Community Education & Support Services in Learning Libraries.  
"Everyone of us needs help at some point in our life. And, the more that we can lift up those who need it the most in our community, the more the community itself betters." John Rivers

My connection to 10 Shirley Road is literally about births & deaths. I attended antenatal classes at the centre over 15 years ago. My mum, Marie Duggan, attended the NZ Society of Genealogists - Canterbury Branch, where she spent many hours researching. Over 30 years ago, we worked together to research & create a family history book on Charles Duggan, my dad's first ancestor that arrived in New Zealand, <https://www.10shirleyroad.org.nz/charles-duggan/>.

Our ancestors created a place for learning. This location is a very visible historic landmark at the beginning of Shirley Road. Leaving it empty without a community centre, is a constant reminder of what we have lost, that we have been forgotten & have no community legacy for our future generations.  
Q. Land bank 10 Shirley Road or create a legacy?  
A. Please support our local communities & vote for funding [to be brought forward & planning started for] a new centre to be built on 10 Shirley Road. We have the opportunity to be a part of creating the legacy we leave to our descendants. "Be a good ancestor. Stand for something bigger than yourself. Add value to the Earth during your sojourn."  
Marian Wright Edelman



Joanna Gould | [joanna@bowenvale.co.nz](mailto:joanna@bowenvale.co.nz)

W: [www.10shirleyroad.org.nz/](http://www.10shirleyroad.org.nz/) | [www.facebook.com/ShirleyCentre10ShirleyRoad/](https://www.facebook.com/ShirleyCentre10ShirleyRoad/) | [www.facebook.com/groups/www.10shirleyroad.org.nz/](https://www.facebook.com/groups/www.10shirleyroad.org.nz/)  
W: [www.riseuprichmond.nz/](http://www.riseuprichmond.nz/) | [www.facebook.com/RiseUpRichmond/](https://www.facebook.com/RiseUpRichmond/) | [www.facebook.com/groups/2070060349907745/](https://www.facebook.com/groups/2070060349907745/)  
W: [www.getcreativechristchurch.nz/](http://www.getcreativechristchurch.nz/) | [www.facebook.com/GetCreativeChristchurch/](https://www.facebook.com/GetCreativeChristchurch/) | [www.facebook.com/groups/299724980619778](https://www.facebook.com/groups/299724980619778)



**7. Shirley Centre Images (2018) | 10 Shirley Road/Shirley Community Reserve**

**Landscape Design**

- existing established trees, introduce different native plants, name of tree/plant signs
- grey brick edging wide paths leading up to centre, "Buy A Brick" funding for individuals/families
- sensible seating under trees, by playground and stream, "Sponsor A Seat" funding for businesses
- mini roading system path around and through the playground area, to teach road safety and provide access to all areas of the playground for strollers/wheelchairs
- access paths to connect existing Shirley Playcentre with the playground/centre

**Sign Design**

- Open hours and facilities available inside the centre
  - Outdoor signage with directory of community groups using this facility
  - Lockable outdoor noticeboard with current local event details/calendar, where locals can promote events in the area and at other local facilities
  - History of the previous building
- "This building was constructed in 1915 as Shirley Primary School. It was built to the design of Education Board architect George Penlington."
- History of the Christchurch earthquakes
- "Shirley Community Centre (former Shirley Primary School), 10 Shirley Road, Christchurch. Category 2 historic place (#7117) - Demolished 2012"
- History of the new building
- Christchurch City Council & Community Board, Funding Process, Building Process, Opened ????
- Plant name signs, in different languages, QR code link to info on plant species etc.

**Exhibit Design "Your Space in this World"**

- to create awareness, and inspire acceptance of all mental health issues and disabilities

When my son was 6 years old we had a lot of assessments/appointments at Whakatata House. We came across the 'Dyslexia Discovery Exhibit', opposite the Arts Centre, at 21 Worcester Boulevard. My son was intrigued with this interactive space and spent a lot of time enjoying the discoveries he made. This space inspired me and reassured me that whatever disabilities my son would be diagnosed with (ADHD, Autism, Sensory Processing), he would find his "space in this world" that accepted his differences.

'Dyslexia sculpture garden up for award', [https://www.dyslexiafoundation.org.nz/pdf/dde\\_press\\_article.pdf](https://www.dyslexiafoundation.org.nz/pdf/dde_press_article.pdf)

"A Christchurch sculpture garden that celebrates work on dyslexia and by dyslexia sufferers is in the running for a national architecture award. The garden features sculptures by Weta Workshop's Richard Taylor and English artist Mackenzie Thorpe. Both are dyslexic. A third sculpture celebrates the work of Christchurch-born motorcycle designer John Britten, who designed record-breaking motorbikes despite struggling with dyslexia. A fourth sculpture is dedicated to Ron Davis, an American who developed a range of techniques to help dyslexia sufferers."

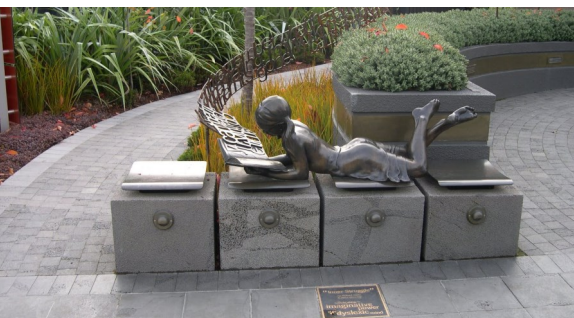
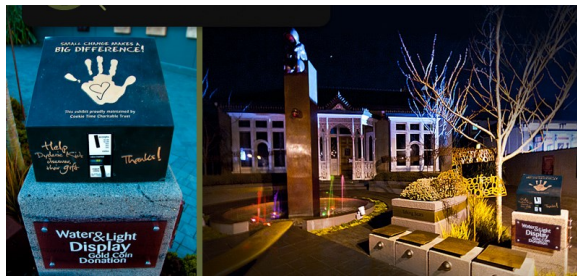
[https://www.dyslexiafoundation.org.nz/pdf/exhibit\\_wins.pdf](https://www.dyslexiafoundation.org.nz/pdf/exhibit_wins.pdf)

Dyslexia Discovery Exhibit, Christchurch, New Zealand  
<http://tonyshaw3.blogspot.com/2013/04/dyslexia-discovery-exhibit-christchurch.html>

"This striking bronze sculpture exhibit, was commissioned by the Dyslexia Foundation of New Zealand. Words fly out of the book in a long stream, floating through the air. Letters and words meld in confusion... 'Inner Struggle' by Richard Taylor & Weta Workshop, "Celebrating the imaginative power of the dyslexic mind"."

"Inventor John Britten died 12 years before the official recognition of a condition that dogged him all his life. But his widow, Kirsteen Britten, said he would be thrilled at the way dyslexia had been recognised. Mrs Britten was a guest yesterday at the opening of the world's first Dyslexia Discovery Exhibit, in Christchurch, to see a sculpture inspired by her late husband. Free Flight - The Boy Who Could Do Better, by artist Paul Dibble, recognises Mr Britten, who made his name designing world-beating motorcycles. The opening of the centre comes just days after the Ministry of Education, after pressure from the Dyslexia Foundation, announced official recognition of dyslexia - a disorder that impairs the ability to read and write. "John and I didn't understand our own minds and our dyslexia. There hadn't been any help or support. So it's really huge that dyslexic children will be encouraged and have a chance to reach their full potential." Dyslexia affected Mr Britten all his life; he had "real difficulty" with letters, although he could build "amazing creations". "He had wonderful support from his family and was encouraged...to explore his dreams and imagination rather than shut down as many dyslexic people do.""

<https://www.nzherald.co.nz/nz/recognition-of-dyslexia-fantastic/WKS6ZDWXX64OX5OUSJBQOICU/>



Joanna Gould | joanna@bowenvale.co.nz

W: www.10shirleyroad.org.nz / W: www.facebook.com/ShirleyCentre10ShirleyRoad / W: www.riseuprichmond.nz / W: www.facebook.com/RiseUpRichmond / W: www.facebook.com/GetCreativeChristchurch / W: www.facebook.com/GetCreativeChristchurch / W: www.facebook.com/groups/299724980619778





7. Shirley Centre Images (2018) | 10 Shirley Road/Shirley Community Reserve



New Shirley Community Centre | 10 Shirley Road | Library, Service Centre, Learning Centre, Playground, Playcentre



Joanna Gould | joanna@bowenvale.co.nz

W: www.10shirleyroad.org.nz | FG: www.facebook.com/groups/www.10shirleyroad.org.nz

W: www.riseuprichmond.nz | FG: www.facebook.com/groups/2070060349907745/

W: www.getcreativechristchurch.nz | FG: www.facebook.com/groups/299724980619778



This building was built as Shirley Primary School in 1915 to the design of Education Board architect George Penington. A place for learning.

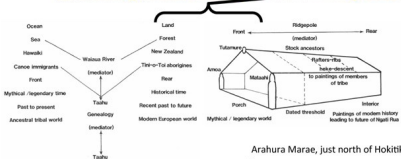
As Shirley Community Centre it became a place for: Cultural, Educational and Recreational Activities.

Georgian style, U-shaped plan, Jacobean influence. Brick masonry with Marseilles tile roof.

Polychromatic brick construction and large triple hung windows.



For more information: <https://www.10shirleyroad.org.nz/>



St Martin's Community Centre, Christchurch. Combination of large glass windows and new/recycled bricks.

Creators Early Learning Centre, Hamilton. Natural wood, large glass windows, features marae design.

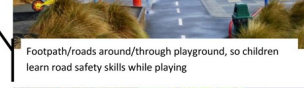
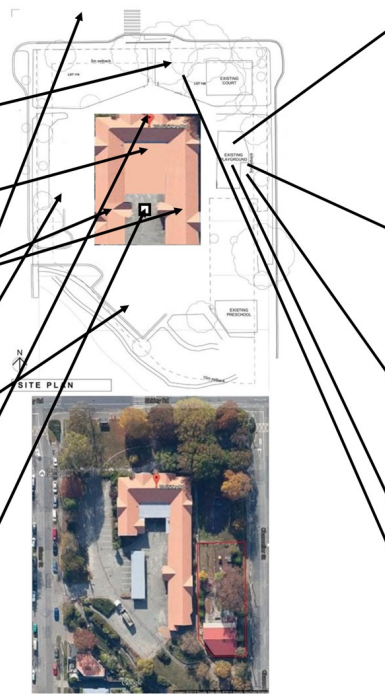
Creators Early Learning Centre, Hamilton. Cathedral ceilings. Skylight and Sliding doors to internal garden.



New Shirley Community Centre | 10 Shirley Road, Christchurch | Joanna Gould | April 2018

New Shirley Community Centre | 10 Shirley Road | Library, Service Centre, Learning Centre, Playground, Playcentre

- a whole neighbourhood block dedicated to this community (new purpose built library/learning centre, beside newly landscaped Dudley stream with existing Shirley Playcentre and upgraded playground)
- established large trees with seating underneath, grass area for weekend outdoor market, seating under verandah of the new centre building, outdoor chess set, existing basketball court, fruit trees
- library: open longer hours so fulltime workers have better access, with service centre, free wifi/internet access, with enabled printer, public computers, tables so you can bring your own device (iPad/Laptop), comfortable chairs by magazines/fiction
- learning centre: open glass space with sliding doors to create smaller rooms when needed for community groups, after school activities, holiday programs, classes for job seekers, family history, self publishing etc.
- website and community noticeboard on the outside of the centre, listing all local community facilities/places to hire/groups/activities/contact details
- disability/sensory friendly playground so all children are included and enjoy this playground
- existing bus stops on either side of Shirley Road, onsite parking behind the centre, off street parking upgraded on Slater Street and Chancellor Street
- Entrance architecture similar to front of marae, welcoming everyone into this space, celebrate and acknowledge Maori culture.
- Inside Entrance displays on: Treaty Of Waitangi, NZ History, ANZAC History, to remind of our ancestors
- "Welcome" displayed in different languages to represent the different nations of those who have settled in Christchurch
- Exhibit Design "Your Space in this World" symbols to represent: Christchurch Earthquakes: White Chair and Cherry Blossom Tree, ANZAC Day: White Cross and Poppies, Maori Heritage: Black/White Kowhaiwai patterns and Pungas/Ferns



New Shirley Community Centre | 10 Shirley Road, Christchurch | Joanna Gould | April 2018

7. Shirley Centre Images (2019) | 10 Shirley Road/Shirley Community Reserve

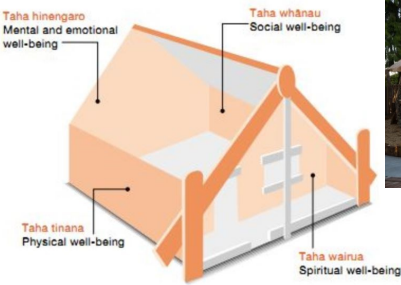


Shirley Centre | 10 Shirley Road | Building Design | Exterior



This building was built as Shirley Primary School in 1915 to the design of Education Board architect George Penlington.

As Shirley Community Centre it became a place for: Cultural, Educational and Recreational Activities. A place for learning.



St Martin's Community Centre. Combination of large glass windows and new/recycled bricks.



Shirley Centre | 10 Shirley Road | Building Design | Interior

Flexible Learning Spaces, Adjustable Size with interconnecting Glass Sliding Doors, Flooring suitable for all activities.

<https://www.getcreativechristchurch.nz/learning-spaces/>

Matuku Takotako: Sumner Centre | <https://vimeo.com/254767603> | Areas for all ages/stages, "feels like home".

Inspired by Interior Layout, Atrium, Central Service Counter, Community Room, Wall Colour, Bookshelves, Furniture.



Joanna Gould | [joanna@bowenvale.co.nz](mailto:joanna@bowenvale.co.nz)

W: [www.10shirleyroad.org.nz/](http://www.10shirleyroad.org.nz/) | FG: [www.facebook.com/groups/www.10shirleyroad.org.nz/](https://www.facebook.com/groups/www.10shirleyroad.org.nz/)

W: [www.riseuprichmond.nz/](https://www.riseuprichmond.nz/) | FG: [www.facebook.com/groups/2070060349907745/](https://www.facebook.com/groups/2070060349907745/)

W: [www.getcreativechristchurch.nz/](https://www.getcreativechristchurch.nz/) | FG: [www.facebook.com/groups/299724980619778](https://www.facebook.com/groups/299724980619778)



7. Shirley Centre Images (2021) | 10 Shirley Road/Shirley Community Reserve

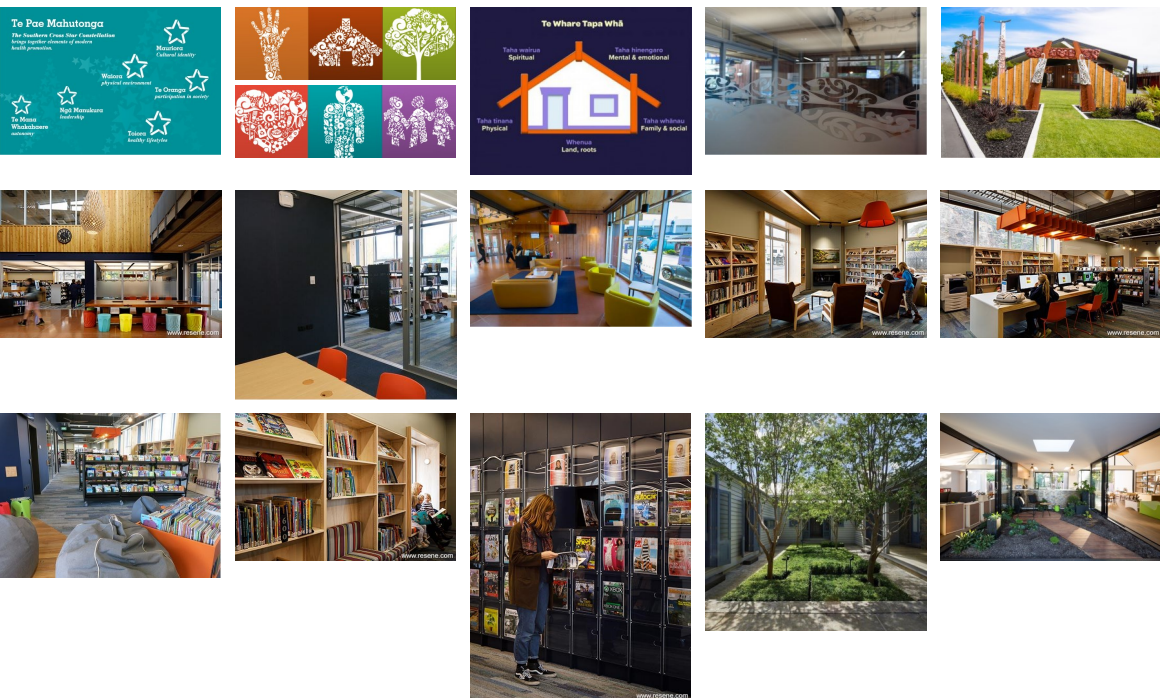
**Shirley Centre | Building Ideas Building**

Two Storey, Dudley Character Area Design Guidelines, include George Penlington (original building) & Benjamin Oakes Moore (12 Julius Terrace) design features, Māori inspired entrance (Waharoa), combined stairs/ramp to the building, glass automatic doors with 'welcome' in different languages, door at northern & southern end of building, wrap staircase around the outside of a lift on the western side of the building, universal standalone toilets either side of lift/stairs, southern end of the building built mainly of glass/windows & designed to capture the view of the significant trees/Dudley Creek/Port Hills, Solar Power, Rainwater Collection, EV Charging Stations.



**Shirley Centre | Building Ideas Interior**

Ground Floor: 'Welcome' desk at northern & southern end of building, Young Adults (front left corner) & Children's (front right corner), NZ/Genealogy (back left corner) & Newspapers/Magazines/DVDs (back right corner), Fiction Collection, Staff Desk (eastern side of the building), Self Return/Issue Desks, Computer Desks, variety of seating options/areas. Learning/Meeting spaces: centre of the building, glass with sliding doors to create smaller spaces, incorporate 9. Shirley Centre | Design Considerations, 10.3 Shirley Centre | Design Inspiration: Māori Culture: Te Pae Māhutonga, 10.4 Shirley Centre | Design Inspiration: Māori Culture: Te Whare Tapa Whā & 10.5 Shirley Centre | Design Inspiration: Māori Culture: Whakairo (Carving).  
 First Floor: Non-Fiction Collection, Internal Garden: sliding door sides with open roof (George Penlington 'Open Air' natural light and ventilation), Learning/Meeting spaces: see 6.4 Shirley Centre | CCC Community Facilities: Redcliffs Village Library (Project Gallery, Plans: when closed sliding doors create the meeting room), Staff Room (eastern side of the building), Self Return/Issue Desks, Computer Desks, variety of seating options/opportunities.



Joanna Gould | joanna@bowenvale.co.nz  
 W: www.10shirleyroad.org.nz / W: www.facebook.com/groups/www.10shirleyroad.org.nz /  
 W: www.facebook.com/ShirleyCentre10ShirleyRoad / FG: www.facebook.com/groups/www.10shirleyroad.org.nz /  
 W: www.riseuprichmond.nz / FG: www.riseuprichmond.nz /  
 FP: www.facebook.com/RiseUpRichmond / FG: www.facebook.com/groups/2070060349907745 /  
 W: www.getcreativechristchurch.nz / FG: www.getcreativechristchurch.nz /  
 FP: www.facebook.com/GetCreativeChristchurch / FG: www.facebook.com/groups/299724980619778



Shirley Centre | Landscape Ideas:



**Current Site Map**

**Shirley Centre | Landscape Ideas:  
Internal Courtyard (centre of the First Floor)**

Quiet/Reflective space, rain garden, central planter box, dwarf/ornamental tree with changing leaf colour through the seasons, Japanese inspired: Weeping Japanese Maple Tree, outdoor friendly seating under eaves/roof.

**Shirley Centre | Landscape Ideas:  
Natives Garden (by Dudley Creek)**

Add more native plants to the southern boundary to attract native birds: <https://www.doc.govt.nz/get-involved/conservation-activities/attract-birds-to-your-garden/> & <https://www.doc.govt.nz/nature/native-animals/birds/birds-a-z/>

**Shirley Centre | Landscape Ideas:  
Wellbeing Sensory Garden (front left)**

New Tree planted at Opening Ceremony for the new Shirley Centre:

“Dudley Street Oak: The trees are Quercus x heterophylla, aka Bartrams oak, which are rare in both the Christchurch and NZ context. Arguably, they also constitute the single most significant feature in the Dudley Street Character Area.”

<https://givealittle.co.nz/fundraiser/chchnotabletrees/updates/ae01d924>

“Discover how certain plants can form a barrier against air and noise pollution, why green is so good for us, the way plants can help to save energy, how birdsong alleviates anxiety. With this groundbreaking book, find out how, in sometimes very simple ways, you can create an outdoor green space that nourishes your mind and body, and is good for our planet too.”

‘Your Well-being Garden’ by Alistair Griffiths

Book: <https://christchurch.bibliocommons.com/v2/record/S37C1134651>

eBook: <https://christchurch.bibliocommons.com/v2/record/S37C1247196>

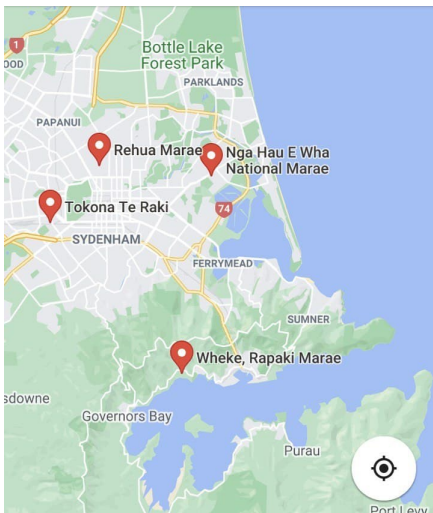
**Shirley Centre | Landscape Ideas:  
Basketball Area (front right)**

Add variety of seating options/opportunities to grass area beside half-basketball court, picnic table (outdoor workspace), youth friendly area.

**Shirley Centre | Landscape Ideas:  
Playground**

Safety fence/enclosed area with child-proof gate, Inclusive, Accessible playground equipment, Pour Play Safety Surface (green/grass & blue/water) to depict Christchurch East, ‘outdoor stage’ to incorporate Christchurch City Libraries

Preschoolers activities/events: <https://my.christchurchcitylibraries.com/preschoolers-events/>



Basket Swing: Fishing Nets/Sea, Trampoline: New Brighton Pier, Hut: National Marae (Māori Heritage), Boat: Lyttelton Port (British Heritage), Brown Mounds: Port Hills, Tunnel through Brown Mounds: Lyttelton Tunnel



Joanna Gould | joanna@bowenvale.co.nz

W: [www.10shirleyroad.org.nz/](http://www.10shirleyroad.org.nz/) | FG: [www.facebook.com/groups/www.10shirleyroad.org.nz/](https://www.facebook.com/groups/www.10shirleyroad.org.nz/)

W: [www.riseuprichmond.nz/](http://www.riseuprichmond.nz/) | FG: [www.facebook.com/groups/2070060349907745/](https://www.facebook.com/groups/2070060349907745/)

W: [www.getcreativechristchurch.nz/](http://www.getcreativechristchurch.nz/) | FG: [www.facebook.com/groups/299724980619778](https://www.facebook.com/groups/299724980619778)





**We need to Stop just pulling people out of the river. Some of us need to go upstream and find out why they are falling in.**  
 (Desmond Tutu)

**WELLNESS WHEEL**

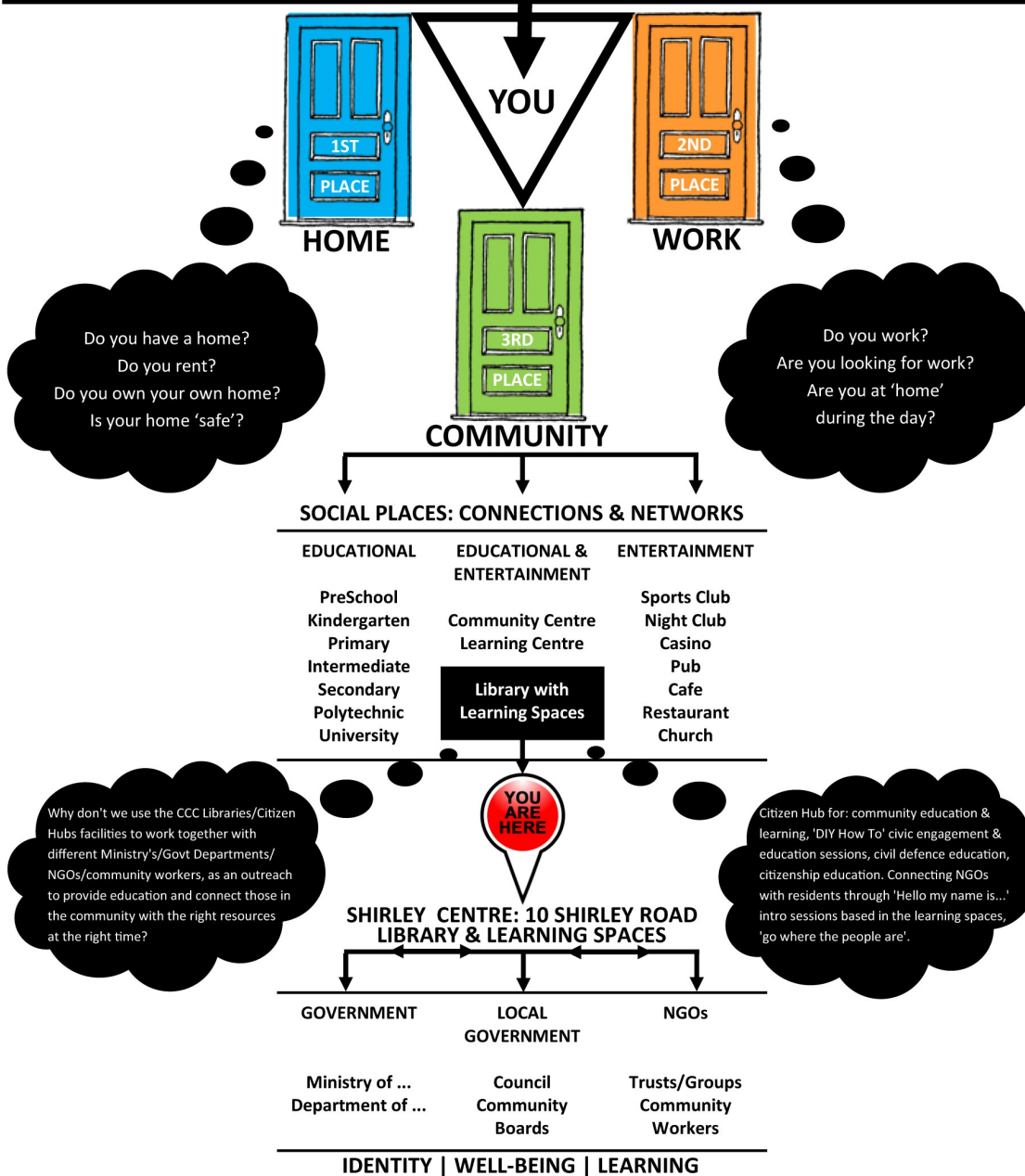
- Intellectual Wellness:** The ability to gain our minds to new ideas and experiences that can be applied to personal decisions, group interaction and community betterment.
- Financial Wellness:** The ability to identify your relationship with money and skills in managing resources. An holistic balance of the mental, spiritual, and physical aspects of money.
- Emotional Wellness:** The ability to get personal fulfillment from our jobs or chosen career fields while still maintaining balance in our lives.
- Spiritual Wellness:** The ability to maintain a healthy quality of life without undue fatigue or physical stress.
- Occupational Wellness:** The ability to get personal fulfillment from our jobs or chosen career fields while still maintaining balance in our lives.
- Physical Wellness:** The ability to maintain a healthy quality of life without undue fatigue or physical stress.
- Environmental Wellness:** The ability to recognize our own responsibility for the quality of the environment that surrounds us.
- Social Wellness:** The ability to relate to and connect with other people in our world.

<https://medicine.yale.edu/urology/education/residents/wellness/>

"Many 20th-century problems—a widening income gap, ongoing racial inequities and injustice, and environmental challenges—persist today, and some have grown worse. Our political system leaves more and more people out of the equation, and increased political and social polarization makes problem-solving even more difficult.

To truly address these 21st-century problems, our society needs 21st-century solutions. We need to build a new civic infrastructure—one where fairness, justice, and economic and educational opportunity prevail, and where all people are engaged as stakeholders in civic and community life. We all have a stake in creating the strongest possible foundation for the greatest possible participation of ordinary people in civic life. It is time to build a 21st-century civic infrastructure—one that supports the permanent capacity for community change and equality of opportunity. When we build it, all can come."

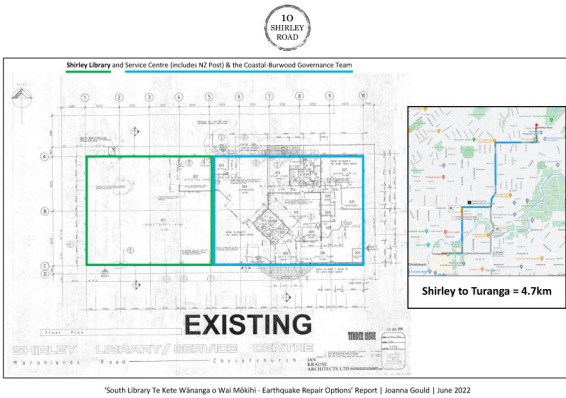
[https://ssir.org/articles/entry/building\\_an\\_intentional\\_and\\_inclusive\\_civic\\_infrastructure](https://ssir.org/articles/entry/building_an_intentional_and_inclusive_civic_infrastructure)



Joanna Gould | joanna@bowenvale.co.nz  
 W: www.10shirleyroad.org.nz / www.facebook.com/groups/www.10shirleyroad.org.nz  
 W: www.riseuprichmond.nz / www.facebook.com/RiseUpRichmond / www.facebook.com/groups/2070060349907745/  
 W: www.getcreativechristchurch.nz / www.facebook.com/GetCreativeChristchurch / www.facebook.com/groups/299724980619778



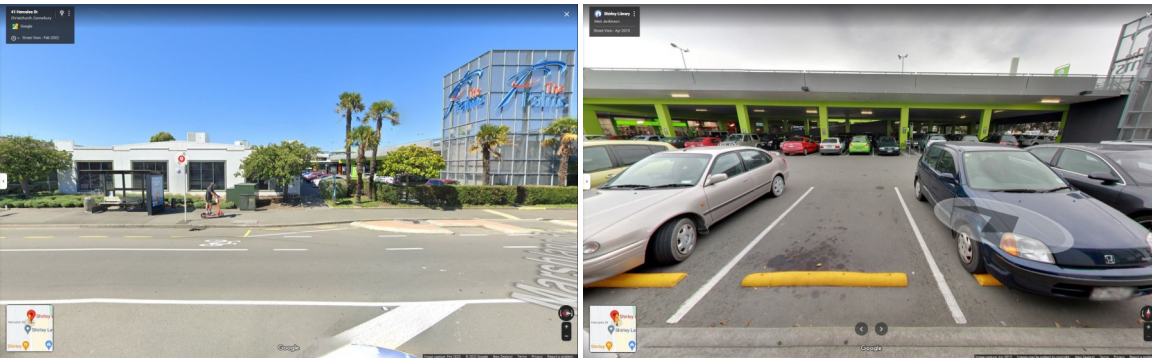
7. Shirley Centre Images (2022) | 10 Shirley Road/Shirley Community Reserve



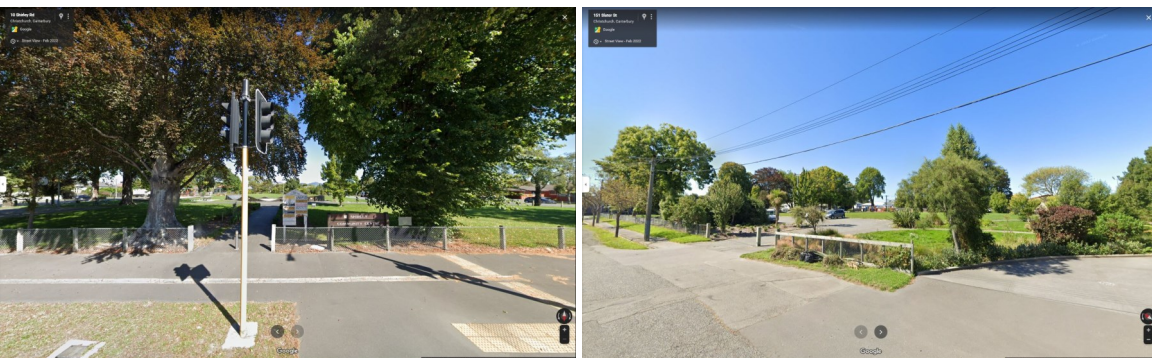
Facility	Year Built (Approx.)	Status	Owned	Service Centre	Bldg Area m2	Capacity	Pop Density /km2 est.	
Akaroa	1989	Open	Leased	No	250	50	367	
Aranui	2012	Open	Owned	No	700	75	1750	
Ōrauwahata: Bishopdale	2017	Open	Owned	No	799	160	2500	
Turanga	2017	Open	Owned	Yes	9850	1300	887	
Fendalton	2000	Open	Owned	Yes	2000	300	1800	
Te Hāpua Halswell	2015	Open	Owned	Yes	3500	900	750	
Hornby	1978	Open	1/2 Share	No	270	50	1600	
Linwood Eastgate	0	Open	Leased	Yes	1150	230	1500	
Lytelton	1999	Open	Owned	Yes	388	70	300	
New Brighton	1999	Open	Owned	No	1000	200	880	
Papanui	1995	Open	Owned	Yes	1200	200	2300	
Parklands	2004	Open	Owned	No	500	100	1800	
Redwood	1970	Open	Owned	No	200	50	1800	
Shirley	1995	Open	Owned	Yes	1060	200	2300	
South	2003	Open	Owned	Yes	2650	600	2000	
Spreydon	1972	Open	Owned	No	250	50	2900	
Matuku Takotako: Summer	2017	Open	Owned	yes	1800	360	430	
Upper Riccarton	2006	Open	Shared Land Use	Leased Land Bull	No	1500	300	2800

Figure 7-4: Libraries Sites

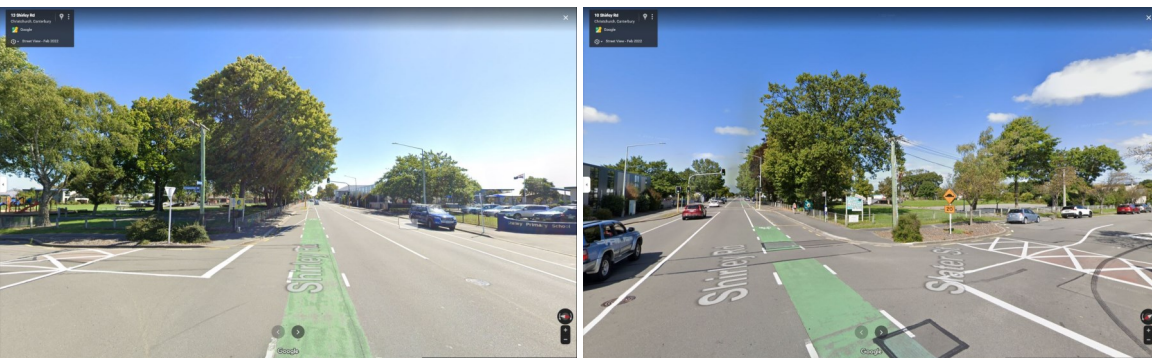
Left: <https://www.10shirleyroad.org.nz/wp-content/uploads/2022/06/SouthLibraryEarthquakeRepairOptionsReportJoannaGould.pdf>, Page 3  
 Green Outline: Current Shirley Library floor space  
 Blue Outline: Christchurch City Council Service Centre (includes NZ Post) & the Governance Team floor space  
 Right: <https://www.10shirleyroad.org.nz/wp-content/uploads/2022/06/SouthLibraryEarthquakeRepairOptionsReportJoannaGould.pdf>, Page 8  
 Shirley Library & Service Centre | Year Built: 1995, Building Area: 1060 m2, Capacity: 200, Pop Density /km2: 2300  
 South Library & Service Centre | Year Built: 2003, Building Area: 2650 m2, Capacity: 600, Pop Density /km2: 2000  
<https://ccc.govt.nz/assets/Documents/The-Council/Plans-Strategies-Policies-Bylaws/Plans/Long-Term-Plan/LTP-2021-final/Asset-Management-Plan-AMP-Libraries-LTP-2021-2031.PDF>, Page 70



Shirley Library & Service Centre | <https://my.christchurchcitylibraries.com/locations/shirley/>  
 36 Marshland Road, Shirley, <https://goo.gl/maps/rCEDnP5XpEz36nvF9>  
 Left: View from Hercules Street towards the Shirley Library & Service Centre, <https://goo.gl/maps/T9683GzPLwu13bbXA>  
 Right: View from inside the Shirley Library & Service Centre, The Palms car park, <https://goo.gl/maps/pvrJzDwmyD1w5M47>



Left: 10 Shirley Road site, with pedestrian crossing & bus stops either side of Shirley Road, <https://goo.gl/maps/xC9JCxukJiFArDr6>  
 Right: 10 Shirley Road site, view of from Slater Street & Dudley Creek pathway, <https://goo.gl/maps/AR8KKaEQwn5cxayS8>



Left: 10 Shirley Road site on the left (looking towards Hills Road), Shirley Primary School on the right, <https://goo.gl/maps/o1zhEVRfHCQoKmvH8>  
 Right: 10 Shirley Road site on the right (looking towards The Palms), Shirley Primary School on the left, <https://goo.gl/maps/THGHPJoQjw9vGn47>

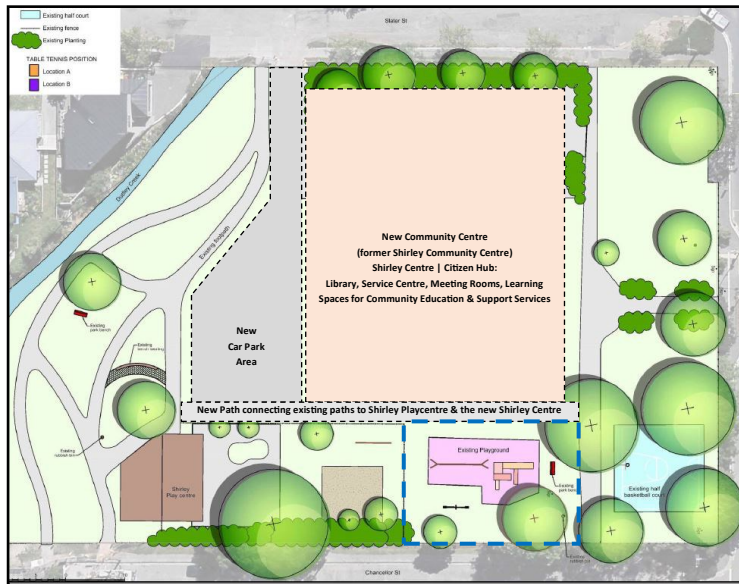


Joanna Gould | [joanna@bowenvale.co.nz](mailto:joanna@bowenvale.co.nz)

W: [www.10shirleyroad.org.nz/](http://www.10shirleyroad.org.nz/) | FG: [www.facebook.com/groups/www.10shirleyroad.org.nz/](https://www.facebook.com/groups/www.10shirleyroad.org.nz/)  
 W: [www.riseuprichmond.nz/](http://www.riseuprichmond.nz/)  
 FP: [www.facebook.com/RiseUpRichmond/](https://www.facebook.com/RiseUpRichmond/) | FG: [www.facebook.com/groups/2070060349907745/](https://www.facebook.com/groups/2070060349907745/)  
 W: [www.getcreativechristchurch.nz/](http://www.getcreativechristchurch.nz/)  
 FP: [www.facebook.com/GetCreativeChristchurch/](https://www.facebook.com/GetCreativeChristchurch/) | FG: [www.facebook.com/groups/299724980619778](https://www.facebook.com/groups/299724980619778)



7. Shirley Centre Images (2023) | 10 Shirley Road/Shirley Community Reserve



**Design Inspiration**

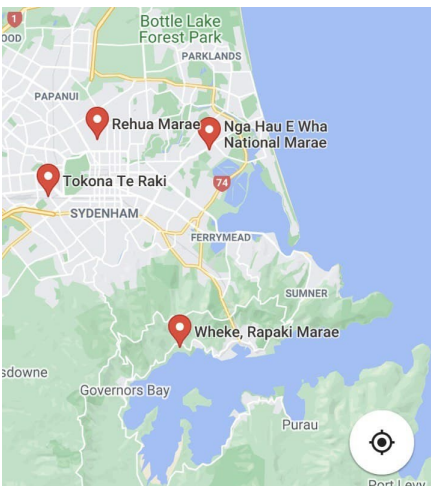
- <https://creospace.co.nz/portfolio/lorna-irene-playground/>
- <https://creospace.co.nz/portfolio/silverdale-school/>
- <https://creospace.co.nz/portfolio/selwyn-ridge-primary-school-tauranga/>
- <https://creospace.co.nz/portfolio/hauraki-school/>
- <https://creospace.co.nz/portfolio/kia-ngawari-te-kohanga-reo/>



**Equipment Components**

- Expression Swing Seat | <https://www.playgroundcentre.com/products/expression-swing-seat/>  
Promotes intergenerational play between parent/grandparent/caregiver & child.
- Flying Saucer Basket Swing | <https://www.playgroundcentre.com/products/flying-saucer-1200mm-basket/>  
Great for family fun and 1-5 children can use it at once. All inclusive and all ages!
- Wheelchair Trampoline | <https://www.playgroundcentre.com/products/wheelchair-trampoline/>  
Along the small sides, the fall protection mat is slanted to create easy access for wheelchairs.
- Inclusive Carousel | <https://www.playgroundcentre.com/products/inclusive-carousel/>  
Ideal for wheelchairs with seating for carers, mums with pushchairs/buggys or just heaps of kids!

**12.6 Shirley Centre | Landscape Ideas | Playground:** <https://www.10shirleyroad.org.nz/landscape-ideas/>  
Safety fence/enclosed area with child-proof gate, Inclusive, Accessible playground equipment, Pour Play Safety Surface (green/grass & blue/water) to depict Christchurch East, 'outdoor stage' to incorporate Christchurch City Libraries Preschoolers activities/events: <https://my.christchurchcitylibraries.com/preschoolers-events/>



Basket Swing: Fishing Nets/Sea, Trampoline: New Brighton Pier, Hut: National Marae (Māori Heritage), Boat: Lyttelton Port (British Heritage), Brown Mounds: Port Hills, Tunnel through Brown Mounds: Lyttelton Tunnel



Joanna Gould | joanna@bowenvale.co.nz

- W: [www.10shirleyroad.org.nz/](http://www.10shirleyroad.org.nz/) | FG: [www.facebook.com/groups/www.10shirleyroad.org.nz/](https://www.facebook.com/groups/www.10shirleyroad.org.nz/)
- W: [www.facebook.com/ShirleyCentre10ShirleyRoad/](https://www.facebook.com/ShirleyCentre10ShirleyRoad/) | FG: [www.facebook.com/groups/www.10shirleyroad.org.nz/](https://www.facebook.com/groups/www.10shirleyroad.org.nz/)
- W: [www.riseuprichmond.nz/](https://www.riseuprichmond.nz/) | FG: [www.facebook.com/groups/2070060349907745/](https://www.facebook.com/groups/2070060349907745/)
- W: [www.facebook.com/RiseUpRichmond/](https://www.facebook.com/RiseUpRichmond/) | FG: [www.facebook.com/groups/2070060349907745/](https://www.facebook.com/groups/2070060349907745/)
- W: [www.getcreativechristchurch.nz/](https://www.getcreativechristchurch.nz/) | FG: [www.facebook.com/groups/299724980619778](https://www.facebook.com/groups/299724980619778)
- W: [www.facebook.com/GetCreativeChristchurch/](https://www.facebook.com/GetCreativeChristchurch/) | FG: [www.facebook.com/groups/299724980619778](https://www.facebook.com/groups/299724980619778)

