

Shirley Community Reserve Consultation

<https://letstalk.ccc.govt.nz/SCR>

Open for feedback from 17 July to 14 August 2023

"Earlier this year, the Waipapa Papanui Innes Central Community Board made the Shirley Community Reserve a key priority in their community board plan. Together, we want to develop a meaningful, dynamic and fun space for everyone, so that the reserve becomes a destination of choice for the community - a safe space, a place that enhances wellbeing, and provides a place for social connection.

The options that we've developed take into consideration feedback received by the Shirley community in 2020, as well as what we've seen works well around Ōtautahi Christchurch.

- Option 1. Leaving the space as it is.
- Option 2. A recreation space with a full basketball court, renewed playground, planting, a picnic and BBQ area, a community garden and a walkway.
- Option 3. Creating a community hub that's open to partnerships with local organisations."

Option 1. Leaving the space as it is.

No. Why?

The land at 10 Shirley Road is classified as reserve, vested in the Council by the Crown to be held "in trust for local purpose (site for a community centre)".

"That means the land could not be used for any other purpose than a community centre...It also appears the land could not simply sit 'vacant'."

Does not restore the service available pre-earthquake on what was a popular, heavily used site.

Unlikely to be acceptable to the Community.

9. Shirley Community Facility Rebuild – 10 Shirley Road (2015)

5. Background (Page 19) & 9.9 Legal Implications (Page 27)

https://christchurch.infocouncil.biz/Open/2015/08/SPCB_19082015_AGN.PDF

"The reserve was previously home to the Shirley Community Centre...Since then, recreational facilities have been built in its place. But local residents have been calling for a new facility to replace the old centre for more than a decade."

<https://www.odt.co.nz/star-news/star-south-today/shirley-community-centres-future-be-decided>

"Our communities lost our well used and well loved community centre at 10 Shirley Rd, following the February 2011 earthquake. We need a new community facility to serve the wider communities of North Richmond, Shirley, Mairehau, Edgware and St Albans east of Cranford Street. We the undersigned, request that Christchurch City Council work with us to rebuild our beloved community centre as soon as possible."

<https://www.10shirleyroad.org.nz/where-is-our-community-centre-petition/>

Prior to the earthquakes, the building was 'active' with day/night time activities/events & used by local community groups. Currently 10 Shirley Road/Shirley Community Reserve is used mostly by the parents/children of the Shirley Primary School, during drop off/pick up times. The majority of the time, this site is left 'vacant' & not 'activated' by local residents.

'Pop up' activities to 'activate' the site have had little success. Events like 'Skip Day' & the 'Car Boot Sale' organised by the 'Shirley Road Central' residents group, required many people to be involved in the planning & running of these events. More hours were invested in planning/meetings, than the actual duration of the event. Events had to be postponed or cancelled due to the weather.

Option 2. A recreation space with a full basketball court, renewed playground, planting, a picnic and BBQ area, a community garden and a walkway.

No. Why?

Most of these suggested 'additions'/activities already exist at the Shirley Community Reserve, or in nearby suburbs.

- Residents have plenty of opportunities to connect with & utilise the existing local green spaces, through Christchurch City Council parks/walking trails/fruit trees, school grounds, community gardens, birdsong trails, Dudley Creek/Esplanade Reserve & the Ōtākaro Avon River Corridor.

<https://www.10shirleyroad.org.nz/local-green-spaces/>

- Full Basketball Court: there is already a half basketball court on site.

Shirley Community Reserve, Richmond (Half Court), <https://goo.gl/maps/912h2UUc99K2dRQG6>

Avon Hub, Richmond (Full Indoor Court), <https://goo.gl/maps/unZcBWFDRtsBNUFE9>

MacFarlane Park, Shirley (Full Outdoor Court), <https://goo.gl/maps/SF5CGR7i6fhZiBc47>

- Community Garden: there are already well established local community gardens in the surrounding suburbs.

MacFarlane Park Community Garden, Shirley

<https://shirleycommunitytrust.org.nz/activity/community-garden/>

Dallington Community Garden

<http://www.ccga.org.nz/garden-directory/dallington-community-garden/>

Delta Community Garden, Richmond

<http://www.ccga.org.nz/garden-directory/delta-community-support-trust/>

Richmond Community Garden

<http://www.ccga.org.nz/garden-directory/richmond/>

Packe Street Park and Community Garden, Edgware

<http://www.ccga.org.nz/garden-directory/packe-street/>

St Albans Community Garden

<https://www.facebook.com/groups/sustainable.stalbans.christchurch/>

- Walkway: there is already a CCC Walking Trail located at the back of the Shirley Community Reserve, that starts in the Shirley Shopping Centre, located at the corner of Hills & Shirley Road.

Through the Dudley Creek Esplanade Reserve (path from Slater Street) <https://goo.gl/maps/Ji5haPVwJxgBF1167>

Then follows the Dudley Creek through the back of the Shirley Community Reserve, along Julius Terrace, across a foot-bridge to Stapletons Road.

The landscaping work that was done, as part of the Dudley Creek Flood Remediation, has created a picturesque 'inviting and accessible waterway corridor'.

See 'Dudley Creek Flood Remediation' <https://www.10shirleyroad.org.nz/historic-landmark/> & <https://riseuprichmond.nz/dudley-creek/>

<https://smartview.ccc.govt.nz/map/layers/walkingtracks#/@172.65369,-43.50847,15>



Joanna Gould | joanna@bowenvale.co.nz

W: www.10shirleyroad.org.nz/ | FG: www.facebook.com/groups/www.10shirleyroad.org.nz/

W: www.riseuprichmond.nz/ | FG: www.facebook.com/groups/2070060349907745/

W: www.getcreativechristchurch.nz/ | FG: www.facebook.com/GetCreativeChristchurch/



Option 3. Creating a community hub that's open to partnerships with local organisations.

Yes. Why?

Community Hub Support | <https://www.10shirleyroad.org.nz/community-hub-support/>

What is in a community hub?

"A community hub is a building or space that is: open and accessible to the local community & providing services that the local community wants and needs."

- 'Shirley Road Central' Group & 'Where is our Community Centre?' Petition
- Letters of Support from Local Christchurch MPs
- Richmond Residents & Business Association/We are Richmond
- Shirley Village Project
- CCC Citizen Hub Strategy
- Shirley Community Facility Feasibility Study
- Local Government New Zealand

CCC Citizen Hub Strategy | <https://www.10shirleyroad.org.nz/ccc-citizen-hub-strategy/>

- "We are proposing a shift to integrated service delivery arrangements whereby Council physical services are grouped together in convenient locations for citizens to access – a Citizen Hub with no wrong doors...A set of design principles have been developed to guide improvement opportunities and the future state model. An implementation approach whereby council libraries will form the base for integrated, multi-discipline citizen hubs is proposed."

- There are 3 Christchurch City Council services (Library, Service Centre & Governance) co located in the Shirley Library and Service Centre building (Burwood Ward), located in The Palms carpark.

- But there is no suburban sized Library or Service Centre in the entire Innes Ward.

- The Shirley Community Centre, has not been 'replaced', not even 'like for like'.

- In 2015 when this Strategy was written, why wasn't a new integrated service delivery Citizen Hub option considered, at 10 Shirley Road, Shirley Community Reserve, site of the former Shirley Community Centre?

21: Shirley Community Centre, Replace. Section 38 (claim insured value) & 26: Shirley Library, Cosmetic repairs.

Christchurch City Council Facilities Rebuild Plan – Tranche 1, <https://christchurch.infocouncil.biz/Open/2022/06/>

[SACRC 20220601 MAT 7539.PDF#PAGE=25](https://www.10shirleyroad.org.nz/sacrc_20220601_MAT_7539.PDF#PAGE=25)

Shirley Community Facility Feasibility Study | <https://www.10shirleyroad.org.nz/shirley-community-facility-feasibility-study/>

- Table 4. Deprivation by Area Units (6 and above): Here we see Richmond South, Edgware and Shirley have higher levels of deprivation (6 and above) as a percentage of total population, much higher than the Christchurch Average.

- Location of Provision: There is no direct provision of Council facilities within the defined facility catchment area (Shirley, Richmond, Edgware and Mairehau) and much of what is provided is Church based, with the area being home to a number of strong Church based Trusts.

- There does appear to be a gap in the area identified on the boundary of Shirley and Richmond.

- 6.4.1 Asset data Across Council Owned Community Facilities: This suggests current provision is lower than the city-wide average in terms of community facilities.

- 6.4.2 Community Provision (Non-Council): There seems a gap (or at least less provision) of non-Church community space across the Community Board, especially as we see the current range of facilities available is split between 'Community' and 'Church-based' Trusts.

- 7.3 Community Needs Analysis for Richmond: Lack of low cost, creative and fun activities for after-school and school holidays. Mental health needs (adults through to children identified as a gap). Need for improved playground facilities across Richmond targeting pre-schoolers and small children.

- 8. Need and Gap Assessment, Summary of Need: With an aging population, it is important to also consider what has been lost that would be of value to older adults.

- Secular Bumping space (for casual interactions and cross-over between activities and areas) for adults like that provided in libraries.

- 9. Discussion, Fit with Christchurch City Council Network Plan: Providing hubs and focal points are important network plan outcomes.

- Potential Activity for the 10 Shirley Road Site: With the provision of the correct infrastructure this site could be reborn as a new interpretation of a contemporary community centre.

- The location of 10 Shirley Road is perfect for this as there is no other Trust close by and yet the location is important to Shirley, Edgware, Mairehau and Richmond.

- 10. Options: An important consideration in this options analysis is how to achieve a sustainable outcome, not just for the community but for Council. One other factor is how to ensure any provision aligns with what is currently and likely to happen in the foreseeable future.

- Table 9. Governance options toward increased activation of 10 Shirley Road: Unfavourable treatment of one Trust over others, Not one Trust that spans these two neighbourhoods, Would be either Church or Non-church aligned, That trust would not necessarily hold the vision (Community Plan) for the whole area.

CCC Community Facilities Network Plan

Christchurch City Council Community Facilities Network Plan | Feedback via email to Councillors (07/08/2019)

<https://www.10shirleyroad.org.nz/wp-content/uploads/2020/04/CCCDraftAnnualPlan2020JoannaGould.pdf>, Page 9

- Page 34, "5.14 Occupancy rates across the Council managed facilities average between 36% and 38% with a customer satisfaction currently of 76%."

- Page 45, "No provider is particularly strong in providing for drop-ins, bumping and social services - Council Libraries are strongest in this area."

- Page 46, "4a. Focusing investment in small number of community hubs (existing and new) of significant size co-located with other Council facilities such as libraries."

- Page 48, "Worldwide trends tell us Community Facilities will be focal points in the community and will become known as neighbourhood and communal gathering places of flexible spaces that allow people to work/play/be/meet together in groups or work/play/be alone but connected to others outside of their homes."

- Page 57, "Facility Location Significance: Some facilities are better suited to be hub locations based on their centrality within a neighbourhood/rural community, geographical location, accessibility and proximity to other hub or key locations such as libraries, social and community outdoor spaces, cafes, economic and commercial centres including malls and or proximity to aligned activity, school/education, church, sport and play related."

- Page 57, "Ward and Neighbourhood Significance: At the network level where there are potential hub facilities, the approach is to support their development as Council owned and operated sites. Hub facilities are where there is co-location and clustering of services: library; service centre; community activity; recreation and sport; civic activity; culture; meeting and public assembly; education and arts activity."



Joanna Gould | joanna@bowenvale.co.nz

W: www.facebook.com/ShirleyCentre10ShirleyRoad/ | FG: www.facebook.com/groups/www.10shirleyroad.org.nz/

W: www.riseuprichmond.nz/ | FG: www.facebook.com/groups/2070060349907745/

W: www.getcreativechristchurch.nz/ | FG: www.facebook.com/GetCreativeChristchurch/

FP: www.facebook.com/GetCreativeChristchurch/ | FG: www.facebook.com/groups/299724980619778



Option 3. Creating a community hub that's open to partnerships with local organisations.

Yes. Why? (continued)

Originally Shirley Road (now Aylesford Street) started at Westminster Street, before crossing over Hills Road to Marshland Road: <https://christchurchcitylibraries.com/Heritage/Maps/174743.asp>
Over 100 years ago in 1915, the original building was built at 10 Shirley Road, as the Shirley Primary School. This school was built at the centre of the then Shirley Road, connecting these communities even in the past. With the building of a new centre at 10 Shirley Road, these communities will once again have a central place to call 'home', with opportunities to connect now & in the future, with residents from the surrounding suburbs: Shirley, Dallington, Richmond, Edgeware, St Albans & Mairehau.

Our local children in the suburbs of Shirley, Dallington, Richmond, Edgeware, St Albans & Mairehau, surrounding 10 Shirley Road/Shirley Community Reserve, are growing up without access to a local 'suburban' sized library with a wide variety of books & learning spaces for after school/holiday programmes in their own communities.

Local Education Providers | <https://www.10shirleyroad.org.nz/local-education-providers/>

The 10 Shirley Road site is central to our 14 local education providers, all are within 3km of the 10 Shirley Road site:

1. **Mairehau High School**, <https://www.mairehau.school.nz/>
440 Hills Road, Mairehau (1.8km from 10 Shirley Road), <https://goo.gl/maps/VCPX8iEpuXMYcHbH6>
2. **Shirley Intermediate School**, <https://sis.school.nz/>
60 Shirley Road, Shirley (700m from 10 Shirley Road), <https://goo.gl/maps/AgkGXmZ5JyihqXR26>
3. **Shirley Primary School**, <https://shirleyprimary.school.nz/>
11 Shirley Road, Shirley (opposite 10 Shirley Road), <https://goo.gl/maps/zWC8oYRQ9gPRvK487>
4. **Pareawa Banks Avenue School**, <https://www.pareawabanksave.school.nz/>
57 Averill Street, Richmond (1.1km from 10 Shirley Road), <https://goo.gl/maps/EJQwBkcbqYZCk3b19>
5. **Arahina ki Ōtautahi Kingslea School**, <https://www.kingslea.school.nz/locations/arahina-ki-otautahi-christchurch/>
19 Pavitt Street, Richmond (2.2km from 10 Shirley Road), <https://goo.gl/maps/YhEagTA8JmT2h51S8>
6. **St Albans Catholic School**, <https://www.stalbanscatholic.school.nz/>
49 Rutland Street, St Albans (2.6km from 10 Shirley Road), <https://goo.gl/maps/cz8B4qbUDtceHCBG6>
7. **St Albans School**, <https://stalbans.school.nz/>
17 Sheppard Place, St Albans (2.2km from 10 Shirley Road), <https://goo.gl/maps/KBqh1qtC7bR7MUrm9>
8. **St Francis of Assisi School**, <http://www.stfrancischch.school.nz/>
370 Innes Road, St Albans (1.9km from 10 Shirley Road), <https://goo.gl/maps/ZEBY238LMbcCPpFR7>
9. **Mairehau Primary School**, <https://mps.school.nz/>
43 Mahars Road, Mairehau (1.7km from 10 Shirley Road), <https://goo.gl/maps/zx1Hc2V5o4tBhpbWA>
10. **Kidsfirst Kindertartens MacFarlane Park**
https://www.kidsfirst.co.nz/christchurch/shirley/macfarlane-park-1.1454_C.1599_N.112668
19 Acheson Avenue, Shirley (1.2km from 10 Shirley Road), <https://goo.gl/maps/UdTVmAb9wfyzygTq86>
11. **Kidsfirst Kindertartens Shirley**, <http://www.kidsfirst.co.nz/Shirley>
3B Ajax Street, Burwood (1.3km from 10 Shirley Road), <https://goo.gl/maps/B2BwjRiqiqGvVtrc8>
12. **Kidsfirst Kindertartens Richmond**, <http://www.kidsfirst.co.nz/richmond>
41 North Avon Road, Richmond (1.4km from 10 Shirley Road), <https://goo.gl/maps/saPdwmTfwgjXFh4A9>
13. **St Albans Playcentre**, <https://www.playcentre.org.nz/centre/st-albans/>
96 Philpotts Road, Mairehau (2.7km from 10 Shirley Road), <https://goo.gl/maps/m3nXxZbqBLvDbdPz8>
14. **Shirley Playcentre**, <https://www.playcentre.org.nz/centre/shirley/>
61 Chancellor Street, Shirley (located in the Shirley Community Reserve), <https://goo.gl/maps/ywFhw7Hkw4FzMVL6>

Learning Support Services

The 10 Shirley Road site is central to our local schools, but also central to our learning support services in Christchurch:

- Autism New Zealand Christchurch, <https://autismnz.org.nz/>
 - 250 Westminster Street, Mairehau (1.4km from 10 Shirley Road), <https://goo.gl/maps/QfZgBQ6hEgXyYDtDA>
 - SPELD New Zealand Christchurch, <https://www.speld.org.nz/>
 - 12 Amos Street, Shirley (1.6km from 10 Shirley Road), <https://goo.gl/maps/afSbbmTWXBQsF3pU6>
 - Seabrook McKenzie Centre, <https://www.seabrookmckenzie.net/>
 - 68 London Street, Richmond (2km from 10 Shirley Road), <https://goo.gl/maps/pxC28ce6sgRTfg9F8>
 - Arahina ki Ōtautahi Kingslea School, <https://www.kingslea.school.nz/locations/arahina-ki-otautahi-christchurch/>
 - 19 Pavitt Street, Richmond (2.2km from 10 Shirley Road), <https://goo.gl/maps/YhEagTA8JmT2h51S8>
- "We work with children and young people (age 10 – 16 years) in the care of Oranga Tamariki to increase engagement and participation in education."

Shirley Youth Audits | <https://www.10shirleyroad.org.nz/shirley-youth-audits/>

In 2021, Shirley youth were invited to participate in Youth Audits at 3 locations: Shirley Library, MacFarlane Park Basketball Court & 10 Shirley Road/Shirley Community Reserve.

The audits were conducted by ReVision, organised by Shirley Village Project & funded by the Department of Internal Affairs.

- Youth Audit Shirley Library [Burwood Ward]

<https://www.10shirleyroad.org.nz/youth-audit-shirley-library/>

The Shirley Library performed below average, in the Youth Friendly Spaces Audit, scoring a total of 64.5% and producing a Net Promoter Score of -50.

- Youth Audit MacFarlane Park [Basketball Court, Shirley]

<https://www.10shirleyroad.org.nz/youth-audit-macfarlane-park/>

The MacFarlane Park Basketball Court performed averagely in the Youth Friendly Spaces Audit, scoring a total of 59.5% and producing a Net Promoter Score of 0.

- Youth Audit 10 Shirley Road [Shirley Community Reserve, Richmond]

<https://www.10shirleyroad.org.nz/youth-audit-10-shirley-road/>

10 Shirley Road performed averagely in the Youth Friendly Spaces Audit, scoring a total of 42% and received a poor Net Promoter Score of -37.5.

Many of the issues identified in the Youth Audits for Shirley Library & 10 Shirley Road, could be addressed by creating a new central 'Community Hub' at the Shirley Community Reserve, that would complement the existing community facilities in MacFarlane Park & surrounding suburbs.

More youth living in the suburbs surrounding Shirley Road: Shirley, Dallington, Richmond, Edgeware, St Albans & Mairehau, could benefit from the positive aspects of the 10 Shirley Road site highlighted in the Youth Audit above.



Joanna Gould | joanna@bowenvale.co.nz

W: www.10shirleyroad.org.nz/ | FG: www.facebook.com/groups/www.10shirleyroad.org.nz/

W: www.riseuprichmond.nz/ | FG: www.facebook.com/groups/2070060349907745/

W: www.getcreativechristchurch.nz/ | FG: www.facebook.com/groups/299724980619778/



Option 3. Creating a community hub that's open to partnerships with local organisations.

Yes. Why? (continued)

Shirley Library | <https://www.10shirleyroad.org.nz/shirley-library/>

The original Shirley Library opened in July 1981, on a site now covered by The Palms.

By 1995 a new building was underway on a different site next to the developing Palms Mall. In January 29 1996, the new library opened in a purpose-built building shared with the Christchurch City Council Shirley Service Centre.

<https://heritage.christchurchcitylibraries.com/Archives/52/Library150/Articles/ShirleyLibrary/>

The current Shirley Library is located in the carpark of The Palms (Burwood Ward).

There are currently no local 'suburban' sized Christchurch City Libraries in the Innes Ward.

Shirley Library is considered a 'suburban' library, but there is a limited book selection, no board room, meeting rooms or learning centre (flexible spaces).

- 'Suburban' library: Catchment ranges from 1.5km to 3km radius; services population range from 15,000 – 40,000.

Services could include a variety of activities and flexible spaces.

UDS – Greater Christchurch Urban Development Strategy and Action Plan 2007.

- 'Neighbourhood' library: Catchment ranges from 1km to 1.5km radius; serves population from 10,000 to 12,000 people.

Services could include small, broad-spanning collections and a range of activities.

"...(2015) Council/ECan planning with mall owners in Shirley, with a view to possible relocation and upgrade of this library as a 'suburban' library." This implies that the current Shirley Library is actually a 'neighbourhood' library?

<https://christchurchcitylibraries.com/2025/Libraries2025FacilitiesPlan.pdf>

The actual floor space allocated to the Shirley Library, is less than half of the current building. As the Service Centre (which includes NZ Post) & the Coastal-Burwood Governance Team are also located in this building.

<https://www.10shirleyroad.org.nz/south-library-report/>

Shirley Library is still considered the second busiest suburban library in Christchurch, even without dedicated learning spaces & meeting rooms.

"It [South] is the third-busiest suburban library, behind Fendalton and Shirley, with 4552 weekly visitors."

<https://i.stuff.co.nz/the-press/news/128047707/earthquake-repairs-spell-18month-closure-of-popular-christchurch-library>

Shirley Library has become our community centre by default, since the Shirley Community Centre was demolished in 2012, as our residents are continuing to 'vote' with their feet.

Libraries are 'third places (social)' the 'living room' of society in our communities.

We have many in our communities who don't have a 'second place (work)': stay at home parents, caregivers, retirees, unemployed, people working from home etc.

Some due to their circumstances don't feel like they have a safe and relaxing 'first place (home)'.

This is why it is so important that our 'third places (social)' are welcoming and inclusive for everyone in our communities.

"Public libraries are trusted sociocultural hubs for enabling lifelong learning and fostering community relationships. As public facing organizations that are open to the widest range of individuals, libraries seek to create safe and welcoming spaces for individuals of different socioeconomic statuses...public library branches offer tailored resources and programs to meet the specific needs of their communities who are navigating the effects of our increasingly asocial society."

"Palaces For The People": Mapping Public Libraries' Capacity for Social Connection and Inclusion (Social Sciences and Humanities Research Council of Canada)

https://macsphere.mcmaster.ca/bitstream/11375/28142/1/Dalmer_SSHRC_AsocialSociety_PalacesforthePeople.pdf

Third Place | <https://www.10shirleyroad.org.nz/third-place/>

"Third places have a number of important community-building attributes.

Depending on their location, social classes and backgrounds can be 'leveled-out' in ways that are unfortunately rare these days, with people feeling they are treated as social equals. Informal conversation is the main activity and most important linking function.

One commentator refers to third places as the "living room" of society.

Many city planning efforts to reinvigorate metropolitan neighborhoods now include specific steps to create third places, especially public spaces, to try and break down social siloes.

Strengthening social networks is a crucial step to reviving neighborhoods and addressing social problems. Third places can do much to help stabilize communities and reduce social problems."

<https://www.brookings.edu/blog/up-front/2016/09/14/third-places-as-community-builders/>

Bumping Spaces | <https://www.10shirleyroad.org.nz/bumping-spaces/>

"Community is built on relationships and people develop relationships through frequent contact with others. So, if you want to build community, you need places to bump into other people. The closer those places are to where you live, the more likely you are to bump into the same people over and over again..."

If you want to develop an inclusive community, you need to have inclusive bumping spaces.

While neighbors typically have all kinds of differences in terms of age, income, culture, religion, politics, interests, etc. they tend to gather with people who are like themselves. To be inclusive, a place should be accessible to those with differing abilities and incomes.

A key reason why places aren't sufficiently inclusive is because so many are single purpose.

They only attract gardeners, basketball players, seniors or whomever the space was specifically designed for.

An inclusive place will be multi-purpose."

"Project for Public Spaces, the premier placemaking organization, calls this the Power of 10. They assert that every place should accommodate at least ten different kinds of activities. Not only will this make the place more inviting to a wide range of users, but it will make it more likely that the place will be used more extensively, at all times of the day and during all seasons of the year making it safer for everyone."

<https://www.theemptysquare.org/stories/bumping-places>

Placemaking | <https://www.10shirleyroad.org.nz/placemaking/>

"What if We Built Our Communities Around Places? Placemaking inspires people to collectively reimagine and reinvent public spaces as the heart of every community. Strengthening the connection between people and the places they share, placemaking refers to a collaborative process by which we can shape our public realm in order to maximize shared value. More than just promoting better urban design, placemaking facilitates creative patterns of use, paying particular attention to the physical, cultural, and social identities that define a place and support its ongoing evolution."

<https://www.pps.org/category/placemaking>

"Placemaking: Building on the 'Soul' of a Place: Every place already has a story to tell—placemaking just brings that story forward... We start with the belief that every place already has a history and a story to tell—that places already have soul.

<https://www.planetizen.com/features/119054-placemaking-building-soul-place>



Joanna Gould | joanna@bowenvale.co.nz
W: www.10shirleyroad.org.nz/ | FG: www.facebook.com/groups/www.10shirleyroad.org.nz/
W: www.riseuprichmond.nz/ | FG: www.facebook.com/groups/2070060349907745/
W: www.getcreativechristchurch.nz/ | FG: www.facebook.com/groups/299724980619778
FP: www.facebook.com/ShirleyCentre10ShirleyRoad/ | FG: www.facebook.com/groups/www.10shirleyroad.org.nz/
FP: www.facebook.com/RiseUpRichmond/ | FG: www.facebook.com/groups/2070060349907745/
FP: www.facebook.com/GetCreativeChristchurch/ | FG: www.facebook.com/groups/299724980619778



Option 3. Creating a community hub that's open to partnerships with local organisations.

Yes. What?

Many residents are unaware of what is available in their 'local backyard', which is where the Christchurch City Council can help to inform & educate residents, through our local Christchurch City Libraries with the help of our local 'information specialists' librarians. <https://www.10shirleyroad.org.nz/historic-landmark/>

This is one of the many reasons why a new 'community hub' (library/learning spaces/community centre) at the Shirley Community Reserve is important, to connect locals with the existing green spaces & facilities in their 'local backyard'.

Shirley Centre Concept | <https://www.10shirleyroad.org.nz/shirley-centre-overview/>

Rebuild Shirley Community Centre as Shirley Centre (Library, Service Centre, Meeting Rooms, Learning Spaces), to continue supporting/connecting the residents around Shirley Road & in the surrounding communities: Shirley, Dallington, Richmond, Edgware, St Albans & Mairehau.

Redevelopment of '10 Shirley Road, Richmond' site into Civic Centre/Citizen Hub with Accessible Playground & Reserve.

- Latest Research/Ideas/Posts | <https://www.facebook.com/ShirleyCentre10ShirleyRoad>

Shirley Centre: Identity | Well-being | Learning

"You Are Here": a place to be, in our communities.

<https://www.10shirleyroad.org.nz/you-are-here-a-place-to-be/>

Community Education & Support Services in Learning Libraries

- Community Education | <https://www.10shirleyroad.org.nz/community-education/>

- Support Services | <https://www.10shirleyroad.org.nz/support-services/>

- Learning Libraries Concept | <https://www.10shirleyroad.org.nz/learning-libraries-concept/>

- Shirley Centre Concept | <https://www.10shirleyroad.org.nz/shirley-centre-concept-image/>

- Instore Demonstration Concept | <https://www.10shirleyroad.org.nz/instore-demonstration-concept/>

'Participate, Engage, Observe', 'You don't know what you need to know, until you need to know it.'

1. 'Suburban' Library
2. Christchurch City Council Service Centre
3. Learning Spaces
4. Meeting Rooms
5. NZ/Genealogy Area
6. Internal Courtyard
7. Indoor/Outdoor Seating Options
8. Natives Garden (Dudley Creek)
9. Wellbeing Sensory Garden
10. Events/Market Space (Carpark)
11. Inclusive Accessible Playground
12. Basketball Court/Youth Area
13. Shirley Playcentre
14. StoryWalk
15. Dudley Creek Trail

- Centre Ideas | <https://www.10shirleyroad.org.nz/centre-ideas/> (2018)

- Building Ideas | <https://www.10shirleyroad.org.nz/building-ideas/> (2021)

- Landscape Ideas | <https://www.10shirleyroad.org.nz/landscape-ideas/> (2021)

- Playground Ideas | <https://www.10shirleyroad.org.nz/playground-ideas/> (2023)

5. Canterbury Genealogy | <https://canterburygenealogy.org.nz/>

"10 Shirley Road was the home for NZ Society of Genealogists – Canterbury Branch, for 21 years from February 1990 until the February 2011 earthquakes. We were hoping that a new Community Centre would be built on the same site to serve the local community in many ways, and possibly return 'home'." <https://www.10shirleyroad.org.nz/original-building/>

Currently Canterbury Genealogy is located at Parkview Community Lounge, 75 Queenspark Drive, Parklands.

<https://goo.gl/maps/TPANY7kBKkHxYRj6>, <https://canterburygenealogy.org.nz/location/>

11. Inclusive Accessible Playground

"Inclusive Playground Design: Accessible Surfacing, Ramps & Transfer Stations, Variety of Play Equipment, Sensory-Stimulating Activities, Quiet Spaces, Inclusive Seating, Signage and Wayfinding, Safety Measures, Inclusive Design Principles & Social Spaces."

<https://creospace.co.nz/2023/07/inclusive-playground-design-an-adventure-in-inclusion-and-fun-for-all/>

"Creo was engaged to re-design the playground and surrounding space to be inclusive, sensory, and cater for a range of ages and abilities." <https://creospace.co.nz/portfolio/lorna-irene-playground/>

12. Basketball Court/Youth Area

Resurface Half Basketball Court. Add variety of seating options/opportunities to grass area beside court, picnic table (outdoor workspace), youth friendly area.

Relocate concrete multi-purpose table & pump track to Avon Hub & add to their existing outdoor facilities at our local community-based sports centre.

<https://gazette.education.govt.nz/articles/school-gym-finds-new-life-as-an-inclusive-community-centre/>

13. Shirley Playcentre | <https://www.playcentre.org.nz/centre/shirley/>

61 Chancellor Street, <https://goo.gl/maps/oqMKT7MQJawX1YAN7>

Located at the back of the Shirley Community Reserve, <https://www.10shirleyroad.org.nz/site-history/>

"We still believe that it takes a village to raise a child...We fervently believe that a parent is the best first teacher a child can have, so we will help equip you to teach your child...We work together with you to find ways to support your child's learning and find their place in our centre."

14. StoryWalk® | <https://letsmovelibraries.org/storywalk/>

Promoting literacy, reading, health, exercise, and movement in communities and neighbourhoods. Connecting books about trees/birds/climate change to local park trails.

15. Dudley Creek Trail | <https://riseuprichmond.nz/dudley-creek/>

Bring residents out into their local community to appreciate the existing tree canopy while walking along Dudley Creek & finding information about local birds/sites/Dudley Creek Flood Remediation.



Joanna Gould | joanna@bowenvale.co.nz

W: www.10shirleyroad.org.nz/ | FG: www.facebook.com/groups/www.10shirleyroad.org.nz/

W: www.riseuprichmond.nz/ | FG: www.facebook.com/groups/2070060349907745/

W: www.getcreativechristchurch.nz/ | FG: www.facebook.com/GetCreativeChristchurch/



Landscape Design

- existing established trees, introduce different native plants, name of tree/plant signs
- grey brick edging wide paths leading up to centre, "Buy A Brick" funding for individuals/families
- sensible seating under trees, by playground and stream, "Sponsor A Seat" funding for businesses
- mini roading system path around and through the playground area, to teach road safety and provide access to all areas of the playground for strollers/wheelchairs
- access paths to connect existing Shirley Playcentre with the playground/centre

Sign Design

- Open hours and facilities available inside the centre
 - Outdoor signage with directory of community groups using this facility
 - Lockable outdoor noticeboard with current local event details/calendar, where locals can promote events in the area and at other local facilities
 - History of the previous building
- "This building was constructed in 1915 as Shirley Primary School. It was built to the design of Education Board architect George Penlington."
- History of the Christchurch earthquakes
- "Shirley Community Centre (former Shirley Primary School), 10 Shirley Road, Christchurch. Category 2 historic place (#7117) - Demolished 2012"
- History of the new building
- Christchurch City Council & Community Board, Funding Process, Building Process, Opened ????
- Plant name signs, in different languages, QR code link to info on plant species etc.

Exhibit Design "Your Space in this World"

- to create awareness, and inspire acceptance of all mental health issues and disabilities

When my son was 6 years old we had a lot of assessments/appointments at Whakatata House. We came across the 'Dyslexia Discovery Exhibit', opposite the Arts Centre, at 21 Worcester Boulevard. My son was intrigued with this interactive space and spent a lot of time enjoying the discoveries he made. This space inspired me and reassured me that whatever disabilities my son would be diagnosed with (ADHD, Autism, Sensory Processing), he would find his "space in this world" that accepted his differences.

'Dyslexia sculpture garden up for award', https://www.dyslexiafoundation.org.nz/pdf/dde_press_article.pdf

"A Christchurch sculpture garden that celebrates work on dyslexia and by dyslexia sufferers is in the running for a national architecture award. The garden features sculptures by Weta Workshop's Richard Taylor and English artist Mackenzie Thorpe. Both are dyslexic. A third sculpture celebrates the work of Christchurch-born motorcycle designer John Britten, who designed record-breaking motorbikes despite struggling with dyslexia. A fourth sculpture is dedicated to Ron Davis, an American who developed a range of techniques to help dyslexia sufferers."

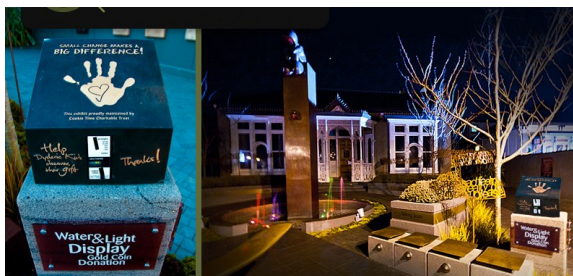
https://www.dyslexiafoundation.org.nz/pdf/exhibit_wins.pdf

Dyslexia Discovery Exhibit, Christchurch, New Zealand
<http://tonyshaw3.blogspot.com/2013/04/dyslexia-discovery-exhibit-christchurch.html>

"This striking bronze sculpture exhibit, was commissioned by the Dyslexia Foundation of New Zealand. Words fly out of the book in a long stream, floating through the air. Letters and words meld in confusion... 'Inner Struggle' by Richard Taylor & Weta Workshop, "Celebrating the imaginative power of the dyslexic mind"."

"Inventor John Britten died 12 years before the official recognition of a condition that dogged him all his life. But his widow, Kirsteen Britten, said he would be thrilled at the way dyslexia had been recognised. Mrs Britten was a guest yesterday at the opening of the world's first Dyslexia Discovery Exhibit, in Christchurch, to see a sculpture inspired by her late husband. Free Flight - The Boy Who Could Do Better, by artist Paul Dibble, recognises Mr Britten, who made his name designing world-beating motorcycles. The opening of the centre comes just days after the Ministry of Education, after pressure from the Dyslexia Foundation, announced official recognition of dyslexia - a disorder that impairs the ability to read and write. "John and I didn't understand our own minds and our dyslexia. There hadn't been any help or support. So it's really huge that dyslexic children will be encouraged and have a chance to reach their full potential." Dyslexia affected Mr Britten all his life; he had "real difficulty" with letters, although he could build "amazing creations". "He had wonderful support from his family and was encouraged...to explore his dreams and imagination rather than shut down as many dyslexic people do.""

<https://www.nzherald.co.nz/nz/recognition-of-dyslexia-fantastic/WKS6ZDWXXX64OX5OUSJBQOICU/>



Joanna Gould | joanna@bowenvale.co.nz

W: www.10shirleyroad.org.nz | FG: www.facebook.com/groups/www.10shirleyroad.org.nz/
 W: www.riseuprichmond.nz | FG: www.facebook.com/groups/2070060349907745/
 W: www.getcreativechristchurch.nz | FG: www.facebook.com/groups/299724980619778





New Shirley Community Centre | 10 Shirley Road | Library, Service Centre, Learning Centre, Playground, Playcentre



Joanna Gould | joanna@bowenvale.co.nz

W: www.10shirleyroad.org.nz/ | F: www.facebook.com/ShirleyCentre10ShirleyRoad/ | F: www.facebook.com/groups/www.10shirleyroad.org.nz/

W: www.riseuprichmond.nz/ | F: www.facebook.com/RiseUpRichmond/ | F: www.facebook.com/groups/2070060349907745/

W: www.getcreativechristchurch.nz/ | F: www.facebook.com/GetCreativeChristchurch/ | F: www.facebook.com/groups/299724980619778



George Penington: NCB and CEB architect, 1900-1911



This building was built as Shirley Primary School in 1915 to the design of Education Board architect George Penington. A place for learning.



As Shirley Community Centre it became a place for: Cultural, Educational and Recreational Activities.



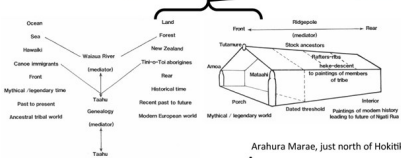
Georgian style, U-shaped plan, Jacobean influence. Brick masonry with Marseilles tile roof.



Polychromatic brick construction and large triple hung windows.



For more information: <https://www.10shirleyroad.org.nz/>



Arahura Marae, just north of Hokitika.

St Martin's Community Centre, Christchurch. Combination of large glass windows and new/recycled bricks.

Creators Early Learning Centre, Hamilton. Natural wood, large glass windows, features marae design.

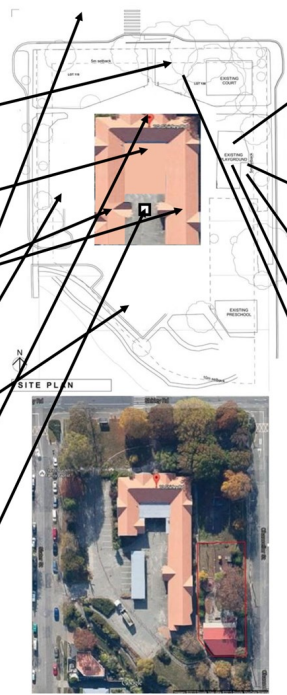
Creators Early Learning Centre, Hamilton. Cathedral ceilings. Skylight and Sliding doors to internal garden.



New Shirley Community Centre | 10 Shirley Road, Christchurch | Joanna Gould | April 2018

New Shirley Community Centre | 10 Shirley Road | Library, Service Centre, Learning Centre, Playground, Playcentre

- a whole neighbourhood block dedicated to this community (new purpose built library/learning centre, beside newly landscaped Dudley stream with existing Shirley Playcentre and upgraded playground)
- established large trees with seating underneath, grass area for weekend outdoor market, seating under verandah of the new centre building, outdoor chess set, existing basketball court, fruit trees
- library: open longer hours so fulltime workers have better access, with service centre, free wifi/internet access, with enabled printer, public computers, tables so you can bring your own device (iPad/Laptop), comfortable chairs by magazines/fiction
- learning centre: open glass space with sliding doors to create smaller rooms when needed for community groups, after school activities, holiday programs, classes for job seekers, family history, self publishing etc.
- website and community noticeboard on the outside of the centre, listing all local community facilities/venues to hire/groups/activities/contact details
- disability/sensory friendly playground so all children are included and enjoy this playground
- existing bus stops on either side of Shirley Road, onsite parking behind the centre, off street parking upgraded on Slater Street and Chancellor Street
- Entrance architecture similar to front of marae, welcoming everyone into this space, celebrate and acknowledge Maori culture.
- Inside Entrance displays on: Treaty Of Waitangi, NZ History, ANZAC History, to remind of our ancestors
- "Welcome" displayed in different languages to represent the different nations of those who have settled in Christchurch
- Exhibit Design "Your Space in this World" symbols to represent: Christchurch Earthquakes: White Chair and Cherry Blossom Tree, ANZAC Day: White Cross and Poppies, Maori Heritage: Black/White Kowhai-whai patterns and Pungas/Ferns



New Shirley Community Centre | 10 Shirley Road, Christchurch | Joanna Gould | April 2018



Existing playground has basic playground equipment, only upgrade if necessary, refresh paint colours



Remove bark chips, surfacing for safety, easy access for strollers/wheelchairs, low maintenance, less mess



Footpath/roads around/through playground, so children learn road safety skills while playing



Disability access, all inclusive equipment, so everyone can play together, whether in wheelchairs/strollers or not



Add other equipment beside the court: outdoor chess set, spider web swing etc.

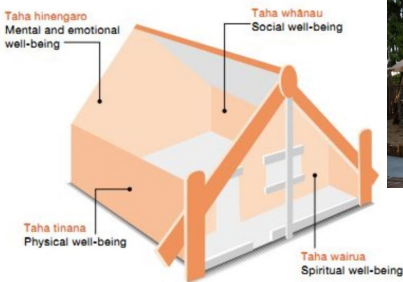


Shirley Centre | 10 Shirley Road | Building Design | Exterior



This building was built as Shirley Primary School in 1915 to the design of Education Board architect George Penlington.

As Shirley Community Centre it became a place for: Cultural, Educational and Recreational Activities. A place for learning.



St Martin's Community Centre. Combination of large glass windows and new/recycled bricks.

Shirley Centre | 10 Shirley Road | Building Design | Interior

Flexible Learning Spaces, Adjustable Size with interconnecting Glass Sliding Doors, Flooring suitable for all activities.

<https://www.getcreativechristchurch.nz/learning-spaces/>

Matuku Takotako: Sumner Centre | <https://vimeo.com/254767603> | Areas for all ages/stages, "feels like home".

Inspired by Interior Layout, Atrium, Central Service Counter, Community Room, Wall Colour, Bookshelves, Furniture.



Joanna Gould | joanna@bowenvale.co.nz
 W: www.10shirleyroad.org.nz/ | FG: www.facebook.com/groups/www.10shirleyroad.org.nz/
 W: www.riseuprichmond.nz/
 FP: www.facebook.com/RiseUpRichmond/ | FG: www.facebook.com/groups/2070060349907745/
 W: www.getcreativechristchurch.nz/
 FP: www.facebook.com/GetCreativeChristchurch/ | FG: www.facebook.com/groups/299724980619778



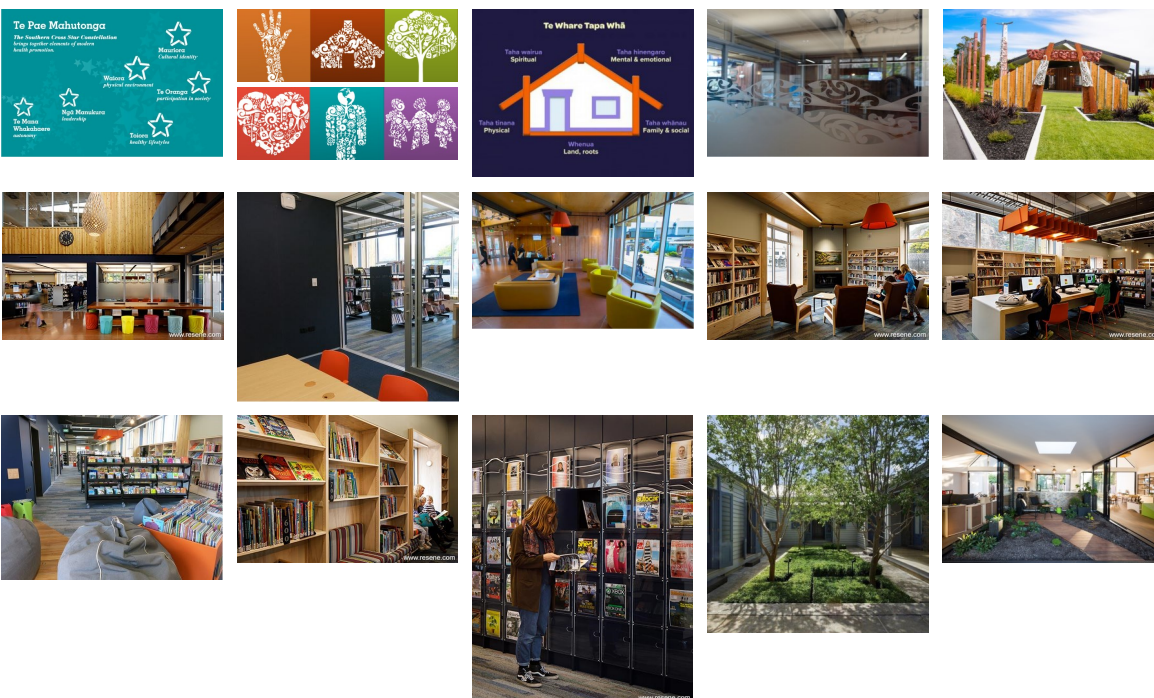
Shirley Centre | Building Ideas Building

Two Storey, Dudley Character Area Design Guidelines, include George Penlington (original building) & Benjamin Oakes Moore (12 Julius Terrace) design features, Māori inspired entrance (Waharoa), combined stairs/ramp to the building, glass automatic doors with 'welcome' in different languages, door at northern & southern end of building, wrap staircase around the outside of a lift on the western side of the building, universal standalone toilets either side of lift/stairs, southern end of the building built mainly of glass/windows & designed to capture the view of the significant trees/Dudley Creek/Port Hills, Solar Power, Rainwater Collection, EV Charging Stations.



Shirley Centre | Building Ideas Interior

Ground Floor: 'Welcome' desk at northern & southern end of building, Young Adults (front left corner) & Children's (front right corner), NZ/Genealogy (back left corner) & Newspapers/Magazines/DVDs (back right corner), Fiction Collection, Staff Desk (eastern side of the building), Self Return/Issue Desks, Computer Desks, variety of seating options/areas. Learning/Meeting spaces: centre of the building, glass with sliding doors to create smaller spaces, incorporate 9. Shirley Centre | Design Considerations, 10.3 Shirley Centre | Design Inspiration: Māori Culture: Te Pae Māhutonga, 10.4 Shirley Centre | Design Inspiration: Māori Culture: Te Whare Tapa Whā & 10.5 Shirley Centre | Design Inspiration: Māori Culture: Whakairo (Carving).
 First Floor: Non-Fiction Collection, Internal Garden: sliding door sides with open roof (George Penlington 'Open Air' natural light and ventilation), Learning/Meeting spaces: see 6.4 Shirley Centre | CCC Community Facilities: Redcliffs Village Library (Project Gallery, Plans: when closed sliding doors create the meeting room), Staff Room (eastern side of the building), Self Return/Issue Desks, Computer Desks, variety of seating options/opportunities.



Joanna Gould | joanna@bowenvale.co.nz
 W: www.10shirleyroad.org.nz / W: www.facebook.com/groups/www.10shirleyroad.org.nz /
 W: www.facebook.com/ShirleyCentre10ShirleyRoad / FG: www.facebook.com/groups/www.10shirleyroad.org.nz /
 W: www.riseuprichmond.nz / FG: www.riseuprichmond.nz /
 FP: www.facebook.com/RiseUpRichmond / FG: www.facebook.com/groups/2070060349907745 /
 W: www.getcreativechurch.nz / FG: www.getcreativechurch.nz /
 FP: www.facebook.com/GetCreativeChurch / FG: www.facebook.com/groups/299724980619778





We need to Stop just pulling people out of the river. Some of us need to go upstream and find out why they are falling in.
 (Desmond Tutu)

WELLNESS WHEEL

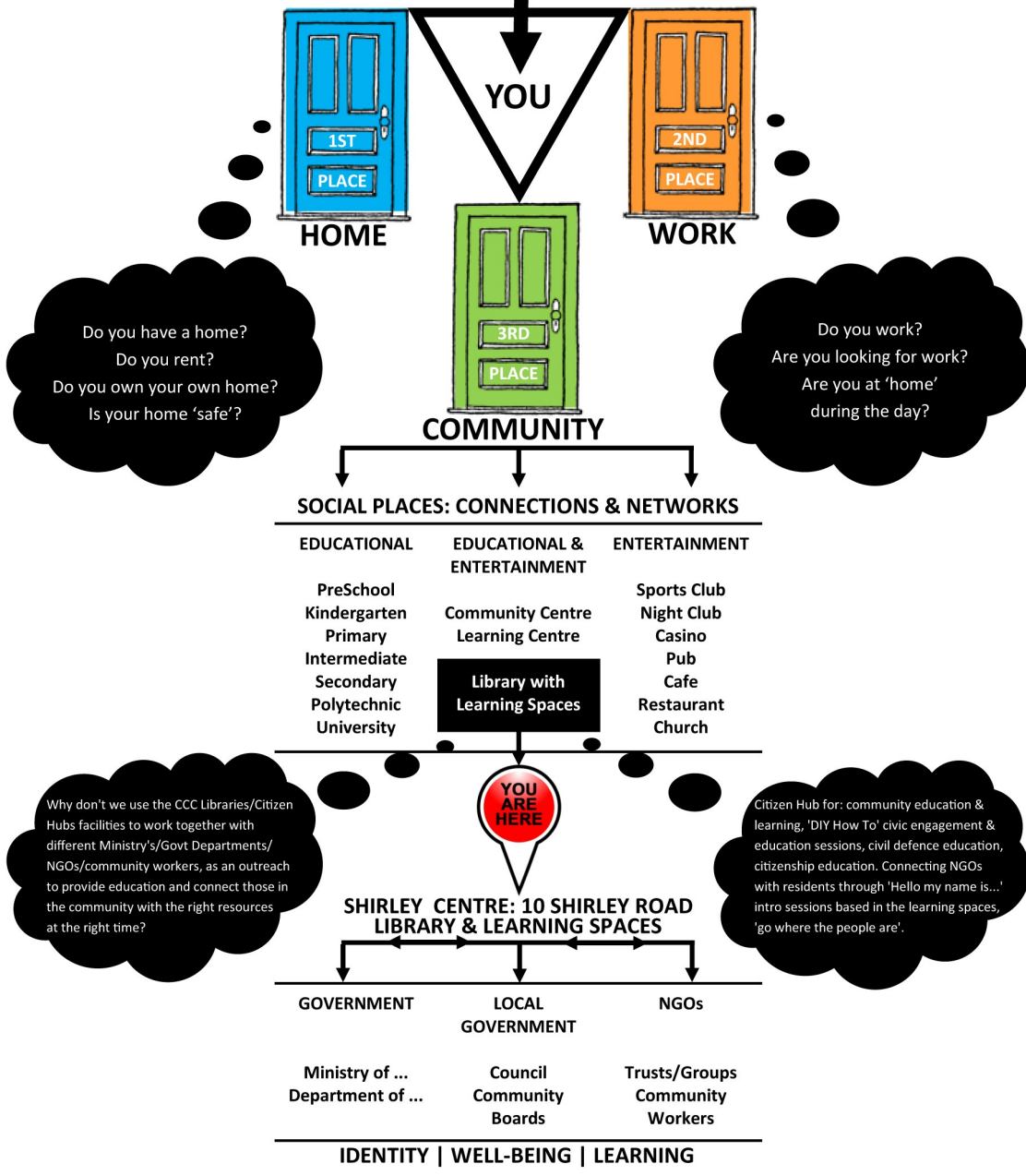
- Intellectual Wellness:** The ability to open our minds to new ideas and experiences that can be applied to personal decisions, group interaction and community betterment.
- Financial Wellness:** The ability to identify your relationship with money and skills in managing resources. An holistic balance of the mental, spiritual, and physical aspects of money.
- Emotional Wellness:** The ability to get personal fulfillment from our jobs or chosen career fields while still maintaining balance in our lives.
- Spiritual Wellness:** The ability to maintain a healthy quality of life without undue fatigue or physical stress.
- Occupational Wellness:** The ability to manage our own responsibility for the quality of the environment that surrounds us.
- Physical Wellness:** The ability to identify your relationship with money and skills in managing resources. An holistic balance of the mental, spiritual, and physical aspects of money.
- Social Wellness:** The ability to relate to and connect with other people in our world.

<https://medicine.yale.edu/urology/education/residents/wellness/>

“Many 20th-century problems—a widening income gap, ongoing racial inequities and injustice, and environmental challenges—persist today, and some have grown worse. Our political system leaves more and more people out of the equation, and increased political and social polarization makes problem-solving even more difficult.

To truly address these 21st-century problems, our society needs 21st-century solutions. We need to build a new civic infrastructure—one where fairness, justice, and economic and educational opportunity prevail, and where all people are engaged as stakeholders in civic and community life. We all have a stake in creating the strongest possible foundation for the greatest possible participation of ordinary people in civic life. It is time to build a 21st-century civic infrastructure—one that supports the permanent capacity for community change and equality of opportunity. When we build it, all can come.”

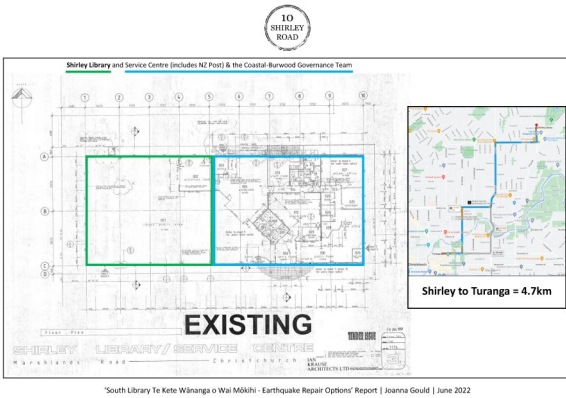
https://ssir.org/articles/entry/building_an_intentional_and_inclusive_civic_infrastructure



Joanna Gould | joanna@bowenvale.co.nz
 W: www.10shirleyroad.org.nz / www.facebook.com/ShirleyCentre10ShirleyRoad / www.getcreativechristchurch.nz
 W: www.riseuprichmond.nz / www.facebook.com/RiseUpRichmond / www.getcreativechristchurch.nz
 W: www.facebook.com/groups/2070060349907745 / www.facebook.com/GetCreativeChristchurch / www.facebook.com/groups/299724980619778



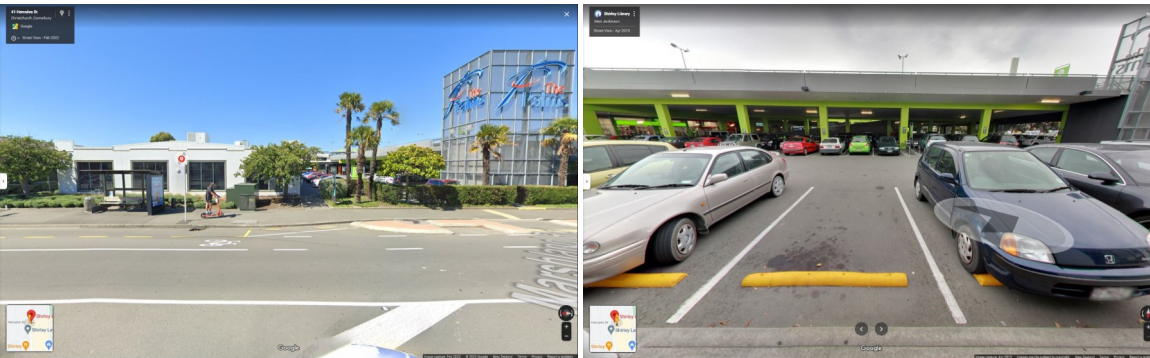
Shirley Centre Images (2022) | 10 Shirley Road/Shirley Community Reserve



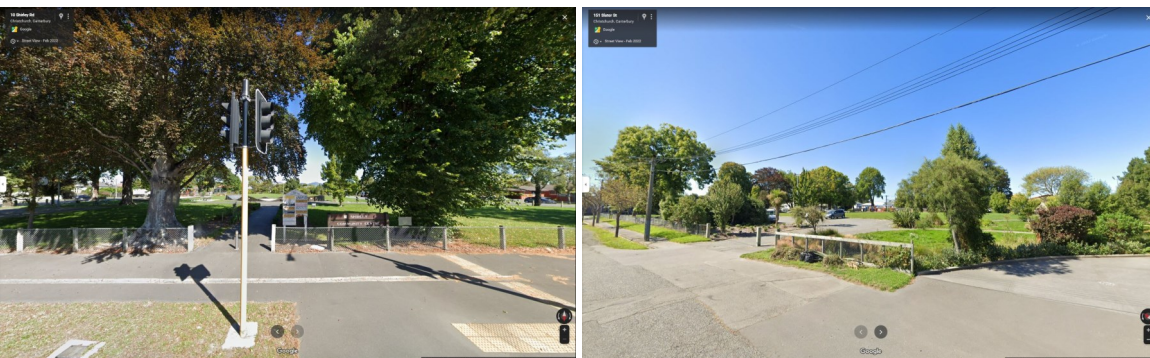
Facility	Year Built (Approx.)	Status	Owned	Service Centre	Bldg Area m2	Capacity	Pop Density /km2 est.
Akaroa	1989	Open	Leased	No	250	50	367
Aranui	2012	Open	Owned	No	700	75	1750
Ōrauwahata: Bishopdale	2017	Open	Owned	No	799	160	2500
Turanga	2017	Open	Owned	Yes	9850	1300	887
Fendalton	2000	Open	Owned	Yes	2000	300	1800
Te Hāpua Halswell	2015	Open	Owned	Yes	3500	900	750
Hornby	1978	Open	1/2 Share	No	270	50	1600
Linwood Eastgate	0	Open	Leased	Yes	1150	230	1500
Lytelton	1999	Open	Owned	Yes	388	70	300
New Brighton	1999	Open	Owned	No	1000	200	880
Papanui	1995	Open	Owned	Yes	1200	200	2300
Parklands	2004	Open	Owned	No	500	100	1800
Redwood	1970	Open	Owned	No	200	50	1800
Shirley	1995	Open	Owned	Yes	1060	200	2300
South	2003	Open	Owned	Yes	2650	600	2000
Spreydon	1972	Open	Owned	No	250	50	2900
Matuku Takotako: Summer	2017	Open	Owned	yes	1800	360	430
Upper Riccarton	2006	Open	Leased Land Built Use	No	1500	300	2800

Figure 7-4: Libraries Sites

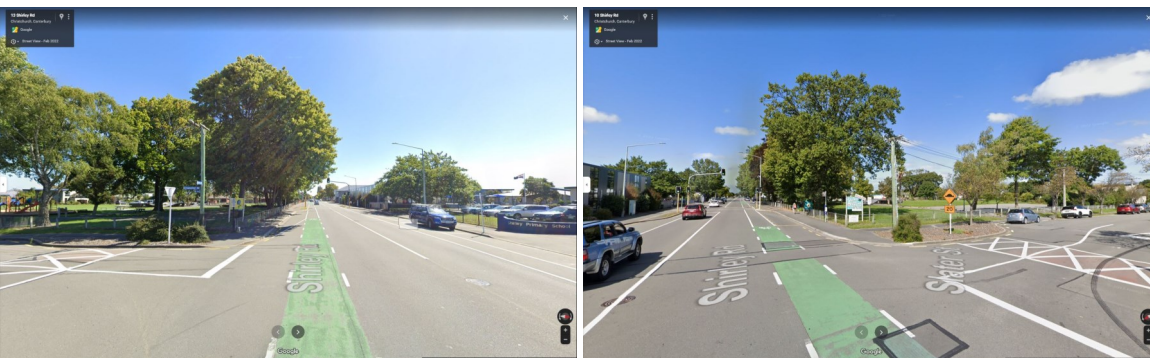
Left: <https://www.10shirleyroad.org.nz/wp-content/uploads/2022/06/SouthLibraryEarthquakeRepairOptionsReportJoannaGould.pdf>, Page 3
 Green Outline: Current Shirley Library floor space
 Blue Outline: Christchurch City Council Service Centre (includes NZ Post) & the Governance Team floor space
 Right: <https://www.10shirleyroad.org.nz/wp-content/uploads/2022/06/SouthLibraryEarthquakeRepairOptionsReportJoannaGould.pdf>, Page 8
 Shirley Library & Service Centre | Year Built: 1995, Building Area: 1060 m2, Capacity: 200, Pop Density /km2: 2300
 South Library & Service Centre | Year Built: 2003, Building Area: 2650 m2, Capacity: 600, Pop Density /km2: 2000
<https://ccc.govt.nz/assets/Documents/The-Council/Plans-Strategies-Policies-Bylaws/Plans/Long-Term-Plan/LTP-2021-final/Asset-Management-Plan-AMP-Libraries-LTP-2021-2031.PDF>, Page 70



Shirley Library & Service Centre | <https://my.christchurchcitylibraries.com/locations/shirley/>
 36 Marshland Road, Shirley, <https://goo.gl/maps/rCEDnP5XpEz36nvF9>
 Left: View from Hercules Street towards the Shirley Library & Service Centre, <https://goo.gl/maps/T9683GzPLwu13bbXA>
 Right: View from inside the Shirley Library & Service Centre, The Palms car park, <https://goo.gl/maps/pvrJzDwmyD1w5M47>



Left: 10 Shirley Road site, with pedestrian crossing & bus stops either side of Shirley Road, <https://goo.gl/maps/xC9JCxukJiFArDr6>
 Right: 10 Shirley Road site, view of from Slater Street & Dudley Creek pathway, <https://goo.gl/maps/AR8KKaEQwn5cxayS8>



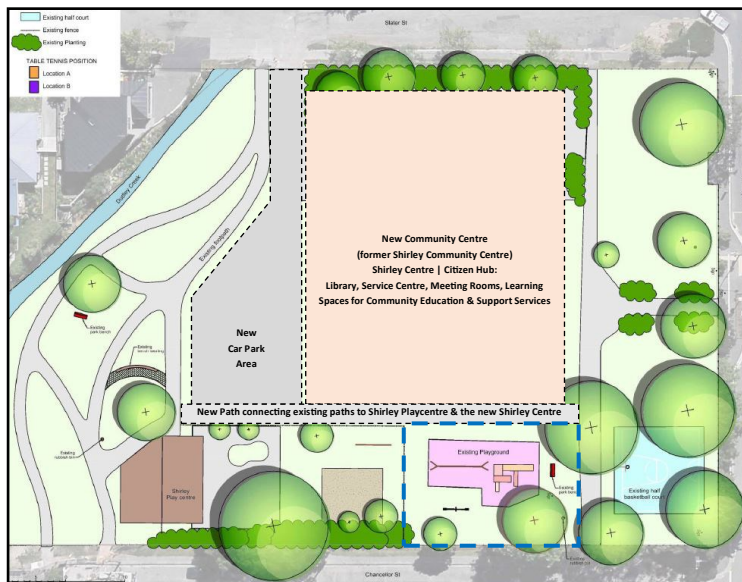
Left: 10 Shirley Road site on the left (looking towards Hills Road), Shirley Primary School on the right, <https://goo.gl/maps/o1zhEVRfHCQoKmvH8>
 Right: 10 Shirley Road site on the right (looking towards The Palms), Shirley Primary School on the left, <https://goo.gl/maps/tHGtHPJoQjw9vGn47>



Joanna Gould | joanna@bowenvale.co.nz

W: www.10shirleyroad.org.nz/ | FG: www.facebook.com/groups/www.10shirleyroad.org.nz/
 W: www.riseuprichmond.nz/
 FP: www.facebook.com/RiseUpRichmond/ | FG: www.facebook.com/groups/2070060349907745/
 W: www.getcreativechristchurch.nz/
 FP: www.facebook.com/GetCreativeChristchurch/ | FG: www.facebook.com/groups/299724980619778





Design Inspiration

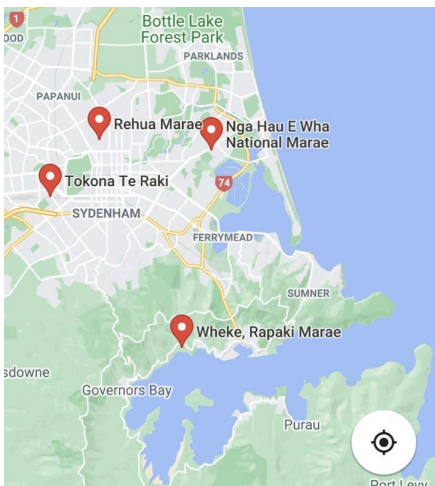
- <https://creospace.co.nz/portfolio/lorna-irene-playground/>
- <https://creospace.co.nz/portfolio/silverdale-school/>
- <https://creospace.co.nz/portfolio/selwyn-ridge-primary-school-tauranga/>
- <https://creospace.co.nz/portfolio/hauraki-school/>
- <https://creospace.co.nz/portfolio/kia-ngawari-te-kohanga-reo/>



Equipment Components

- Expression Swing Seat | <https://www.playgroundcentre.com/products/expression-swing-seat/>
Promotes intergenerational play between parent/grandparent/caregiver & child.
- Flying Saucer Basket Swing | <https://www.playgroundcentre.com/products/flying-saucer-1200mm-basket/>
Great for family fun and 1-5 children can use it at once. All inclusive and all ages!
- Wheelchair Trampoline | <https://www.playgroundcentre.com/products/wheelchair-trampoline/>
Along the small sides, the fall protection mat is slanted to create easy access for wheelchairs.
- Inclusive Carousel | <https://www.playgroundcentre.com/products/inclusive-carousel/>
Ideal for wheelchairs with seating for carers, mums with pushchairs/buggys or just heaps of kids!

Shirley Centre | Landscape Ideas | Playground: <https://www.10shirleyroad.org.nz/landscape-ideas/>
Safety fence/enclosed area with child-proof gate, Inclusive, Accessible playground equipment, Pour Play Safety Surface (green/grass & blue/water) to depict Christchurch East, 'outdoor stage' to incorporate Christchurch City Libraries Preschoolers activities/events: <https://my.christchurchcitylibraries.com/preschoolers-events/>



Basket Swing: Fishing Nets/Sea, Trampoline: New Brighton Pier, Hut: National Marae (Māori Heritage), Boat: Lyttelton Port (British Heritage), Brown Mounds: Port Hills, Tunnel through Brown Mounds: Lyttelton Tunnel



Joanna Gould | joanna@bowenvale.co.nz

- W: www.10shirleyroad.org.nz/ | FG: www.facebook.com/groups/www.10shirleyroad.org.nz/
- W: www.facebook.com/ShirleyCentre10ShirleyRoad/ | FG: www.facebook.com/groups/www.10shirleyroad.org.nz/
- W: www.riseuprichmond.nz/ | FG: www.facebook.com/groups/2070060349907745/
- FP: www.facebook.com/RiseUpRichmond/ | FG: www.facebook.com/groups/2070060349907745/
- W: www.getcreativechristchurch.nz/ | FG: www.facebook.com/groups/299724980619778
- FP: www.facebook.com/GetCreativeChristchurch/ | FG: www.facebook.com/groups/299724980619778

